

DAEMEN COLLEGE

2018-19 BOWLING STATISTICS

4/2/2019 12:57

DAEMEN COLLEGE

TEAM STATISTICS BY FORMAT BY EVENT

division	(All)																																					
Bowler	(Multiple Items)																																					
	All Bowlers																								ANCHOR BOWLER					LEADOFF BOWLER			4TH BOWLER					
Row Labels	COMPLETE FRAMES	INCOMPLETE FRAMES	AVG / FRAME	OVER-ALL FILL %	AVG 1ST BALL	1ST BALL "9+ %"	BAKER DBL STRIKES	BAKER DBL ATTPTS	BAKER DBL %	STRIKES	STRIKE ATTPTS	STRIKE %	ALL SPARES	ALL SPARE ATTPTS	ALL SPARE CONV %	MAKE-ABLE SPARES	MAKE-ABLE SPARE ATTPTS	MAKE-ABLE SPARE %	SINGLE PIN SPARES	SINGLE PIN SPARE ATTPTS	SINGLE PIN SPARE CONV %	MULTI-PIN MAKE-ABLE SPARES	MULTI-PIN MAKE-ABLE ATTPTS	MULTI-PIN MAKE-ABLE CONV %	SPLIT-SPARES	SPLIT ATTPTS	SPLIT CONV %	SPLIT LEAVE %	10TH FRAME ATTPTS	10TH FRAME AVG	10TH FRAME FILL %	10TH FRAME STRIKE %	10TH FRAME DBL %	LEAD-OFF ATTPTS	LEAD-OFF FILL %	LEAD-OFF STRIKE %	SETUP ATTPTS	SETUP %
BAKER	1323	27	16.80	72.0%	8.45	56.4%	125	391	32.0%	438	1350	32.4%	534	912	58.6%	510	785	65.0%	242	324	74.7%	268	461	58.1%	24	127	18.9%	9.4%	135	17.41	74.1%	34.8%	14.1%	135	68.9%	30.4%	135	37.0%
BUD WHITMAN MEMORIAL	248	2	15.86	67.2%	8.23	47.2%	12	54	22.2%	64	250	25.6%	104	186	55.9%	100	161	62.1%	38	54	70.4%	62	107	57.9%	4	25	16.0%	10.0%	25	16.48	68.0%	40.0%	12.0%	25	72.0%	28.0%	25	16.0%
MEDAILLE INVITE	247	3	17.17	73.6%	8.46	56.4%	25	71	35.2%	81	250	32.4%	103	169	60.9%	93	145	64.1%	49	60	81.7%	44	85	51.8%	10	24	41.7%	9.6%	25	19.60	76.0%	40.0%	32.0%	25	76.0%	28.0%	25	40.0%
NOVEMBER 30 - DUALS	57	3	16.51	65.0%	8.12	53.3%	6	21	28.6%	22	60	36.7%	17	38	44.7%	17	30	56.7%	6	10	60.0%	11	20	55.0%	0	8	0.0%	13.3%	6	15.17	50.0%	16.7%	33.3%	6	83.3%	33.3%	6	33.3%
KU KURE - BAKER	245	5	17.27	74.4%	8.52	58.0%	28	84	33.3%	93	250	37.2%	93	157	59.2%	93	135	68.9%	41	52	78.8%	52	83	62.7%	0	22	0.0%	8.8%	25	18.24	84.0%	36.0%	8.0%	25	64.0%	40.0%	25	52.0%
FEB 10 DUAL VS PENNST BEH	44	6	17.61	80.0%	8.67	64.0%	6	17	35.3%	19	50	38.0%	21	31	67.7%	21	27	77.8%	10	13	76.9%	11	14	78.6%	0	4	0.0%	8.0%	5	19.80	100.0%	40.0%	20.0%	5	60.0%	20.0%	5	80.0%
MAR 2 DUAL VS RW	44	6	15.07	70.0%	8.16	48.0%	3	13	23.1%	13	50	26.0%	22	37	59.5%	22	32	68.8%	11	11	100.0%	11	21	52.4%	0	5	0.0%	10.0%	5	12.00	40.0%	0.0%	0.0%	5	20.0%	0.0%	5	40.0%
ECC CHAMPIONSHIPS	438	2	16.97	72.7%	8.57	61.4%	45	131	34.4%	146	440	33.2%	174	294	59.2%	164	255	64.3%	87	124	70.2%	77	131	58.8%	10	39	25.6%	8.9%	44	16.86	75.0%	34.1%	6.8%	44	70.5%	31.8%	44	34.1%
TRADITIONAL	1445	5	17.14	72.1%	8.46	56.1%	0	0		491	1450	33.9%	554	959	57.8%	537	825	65.1%	258	323	79.9%	279	502	55.6%	17	134	12.7%	9.2%	145	16.01	64.8%	31.0%	9.0%	145	71.7%	30.3%	145	37.9%
BUD WHITMAN MEMORIAL	249	1	16.59	70.8%	8.28	53.2%	0	0		75	250	30.0%	102	175	58.3%	99	158	62.7%	47	58	81.0%	52	100	52.0%	3	17	17.6%	6.8%	25	13.32	52.0%	8.0%	0.0%	25	60.0%	24.0%	25	16.0%
MEDAILLE INVITE	250	0	17.58	71.6%	8.60	60.0%	0	0		95	250	38.0%	84	155	54.2%	82	131	62.6%	43	55	78.2%	39	76	51.3%	2	24	8.3%	9.6%	25	16.92	72.0%	28.0%	8.0%	25	56.0%	32.0%	25	52.0%
NOVEMBER 30 - DUALS	100	0	17.51	72.0%	8.40	56.0%	0	0		35	100	35.0%	37	65	56.9%	37	57	64.9%	17	21	81.0%	20	36	55.6%	0	8	0.0%	8.0%	10	19.60	70.0%	60.0%	40.0%	10	80.0%	30.0%	10	40.0%
KU KURE - TRADITIONAL	248	2	16.92	72.4%	8.42	52.8%	0	0		81	250	32.4%	100	169	59.2%	98	144	68.1%	44	51	86.3%	54	93	58.1%	2	25	8.0%	10.0%	25	16.52	72.0%	40.0%	4.0%	25	76.0%	12.0%	25	36.0%
FEB 10 DUAL VS PENNST BEH	100	0	16.83	71.0%	8.50	60.0%	0	0		32	100	32.0%	39	68	57.4%	38	55	69.1%	26	28	92.9%	12	27	44.4%	1	13	7.7%	13.0%	10	14.60	50.0%	10.0%	10.0%	10	80.0%	50.0%	10	20.0%
PAT LACY	248	2	17.40	73.6%	8.56	56.0%	0	0		85	250	34.0%	99	165	60.0%	92	139	66.2%	42	55	76.4%	50	84	59.5%	7	26	26.9%	10.4%	25	17.72	76.0%	48.0%	16.0%	25	84.0%	28.0%	25	52.0%
FEB 16 DUAL	150	0	16.53	70.0%	8.35	54.0%	0	0		46	150	30.7%	59	104	56.7%	58	91	63.7%	25	35	71.4%	33	56	58.9%	1	13	7.7%	8.7%	15	14.67	53.3%	33.3%	6.7%	15	73.3%	46.7%	15	40.0%
MAR 2 DUAL VS RW	50	0	18.76	78.0%	8.56	60.0%	0	0		23	50	46.0%	16	27	59.3%	15	24	62.5%	5	7	71.4%	10	17	58.8%	1	3	33.3%	6.0%	5	14.80	60.0%	20.0%	0.0%	5	80.0%	80.0%	5	20.0%
MARCH 19 DUAL	50	0	17.58	74.0%	8.76	64.0%	0	0		19	50	38.0%	18	31	58.1%	18	26	69.2%	9	13	69.2%	9	13	69.2%	0	5	0.0%	10.0%	5	14.80	60.0%	20.0%	0.0%	5	80.0%	20.0%	5	60.0%
Grand Total	2768	32	16.97	72.0%	8.46	56.3%	125	391	32.0%	929	2800	33.2%	1088	1871	58.2%	1047	1610	65.0%	500	647	77.3%	547	963	56.8%	41	261	15.7%	9.3%	280	16.69	69.3%	32.9%	11.4%	280	70.4%	30.4%	280	37.5%

DAEMEN COLLEGE

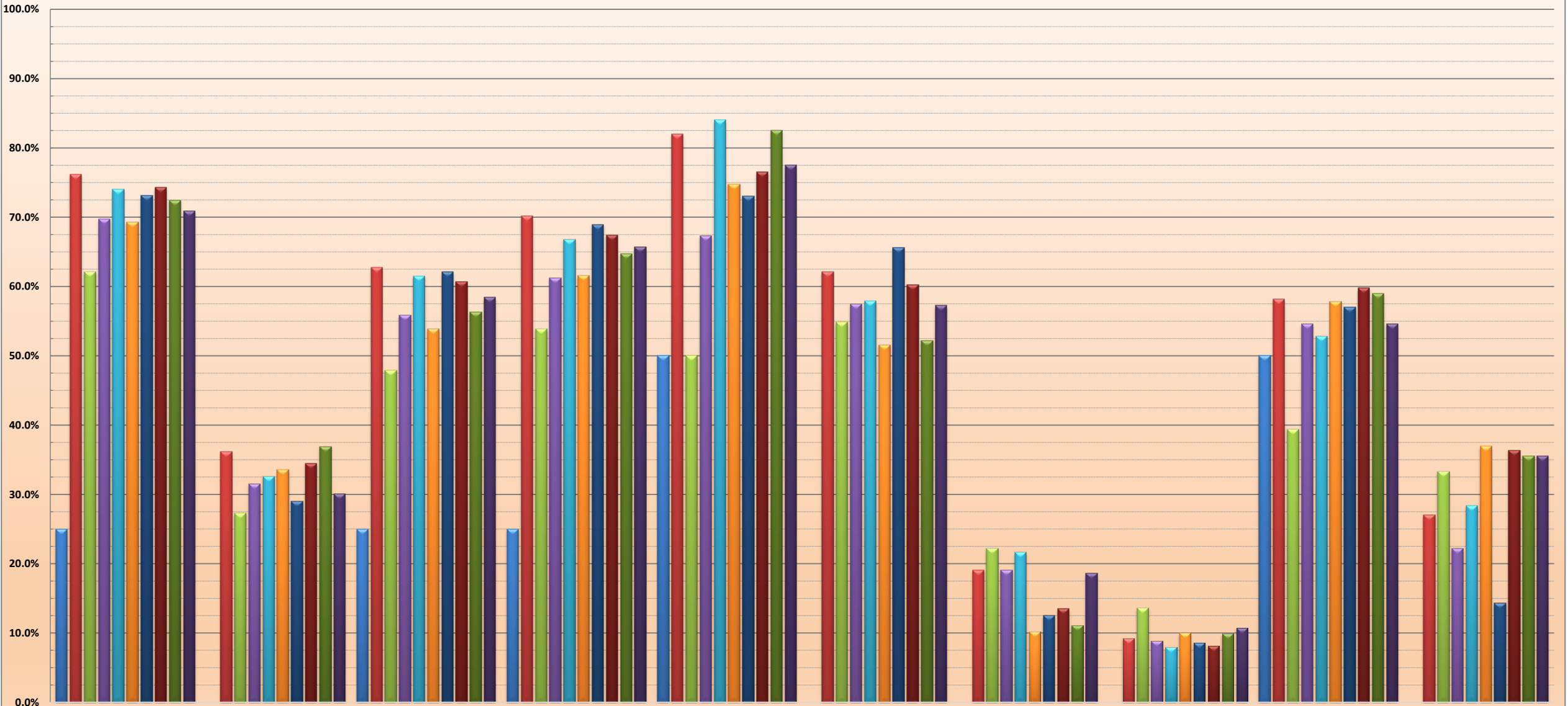
2018-19 TEAM STATISTICS BY FORMAT BY PLAYER - SEASON YTD

division (All)

Row Labels	All Bowlers																										ANCHOR BOWLER					LEADOFF BOWLER			4TH BOWLER			
	COMPLET E FRAMES	INCOMPL ETE FRAMES	AVG / FRAME	OVER-ALL FILL %	AVG 1ST BALL	1ST BALL "9+ %"	BAKER DBL STRIKES	BAKER DBL ATTPTS	BAKER DBL %	STRIKES	STRIKE ATTPTS	STRIKE %	ALL SPARES	ALL SPARE ATTPTS	ALL SPARE CONV %	MAKE-ABLE SPARES	MAKE-ABLE SPARE ATTPTS	MAKE-ABLE SPARE %	SINGLE PIN SPARES	SINGLE PIN SPARE ATTPTS	SINGLE PIN SPARE CONV %	MULTI-PIN MAKE-ABLE SPARES	MULTI-PIN MAKE-ABLE ATTPTS	MULTI-PIN MAKE-ABLE CONV %	SPLIT-SPARES	SPLIT ATTPTS	SPLIT CONV %	SPLIT LEAVE %	10TH FRAME ATTPTS	10TH FRAME AVG	10TH FRAME FILL %	10TH FRAME STRIKE %	10TH FRAME DBL %	LEAD-OFF ATTPTS	LEAD-OFF %	LEAD-OFF STRIKE %	SETUP ATTPTS	SETUP %
BAKER	1323	27	16.80	72.0%	8.45	56.4%	125	391	32.0%	438	1350	32.4%	534	912	58.6%	510	785	65.0%	242	324	74.7%	268	461	58.1%	24	127	18.9%	9.4%	135	17.41	74.1%	34.8%	14.1%	135	68.9%	30.4%	135	37.0%
Soon a	2	0	8.50	0.0%	8.50	50.0%	0	0		0	2	0.0%	0	2	0.0%	0	2	0.0%	0	1	0.0%	0	1	0.0%	0	0	0.0%	0					0			0		
Steele	105	2	17.20	71.0%	8.24	51.4%	10	37	27.0%	34	107	31.8%	42	73	57.5%	40	63	63.5%	14	21	66.7%	26	42	61.9%	2	10	20.0%	9.3%	33	18.45	69.7%	36.4%	30.3%	12	75.0%	25.0%	3	33.3%
Slomba	45	1	15.44	65.2%	7.50	41.3%	4	12	33.3%	15	46	32.6%	15	31	48.4%	13	25	52.0%	2	4	50.0%	11	21	52.4%	2	6	33.3%	13.0%	0					5	80.0%	20.0%	0	
Christina Aldridge	128	3	16.47	68.7%	8.42	55.7%	8	36	22.2%	39	131	29.8%	51	92	55.4%	48	77	62.3%	21	34	61.8%	27	43	62.8%	3	15	20.0%	11.5%	0					0			3	33.3%
Katie Good	211	4	16.91	74.9%	8.37	50.7%	17	60	28.3%	67	215	31.2%	94	148	63.5%	89	133	66.9%	37	42	88.1%	52	91	57.1%	5	15	33.3%	7.0%	7	19.86	85.7%	42.9%	28.6%	14	64.3%	28.6%	7	28.6%
Katlyn Newberry	246	3	16.69	70.7%	8.43	59.4%	24	65	36.9%	86	249	34.5%	90	163	55.2%	86	143	60.1%	44	62	71.0%	42	81	51.9%	4	20	20.0%	8.0%	12	16.17	66.7%	33.3%	8.3%	10	60.0%	20.0%	66	34.8%
Kaitlyn OHara	40	3	16.28	76.7%	8.22	48.8%	2	14	14.3%	7	43	16.3%	26	36	72.2%	25	33	75.8%	10	14	71.4%	15	19	78.9%	1	3	33.3%	7.0%	1	9.00	0.0%	0.0%	0.0%	2	100.0%	0.0%	4	0.0%
Adrianna Pencek	234	0	17.67	76.9%	8.79	66.2%	28	77	36.4%	85	234	36.3%	95	149	63.8%	92	128	71.9%	55	70	78.6%	37	58	63.8%	3	21	14.3%	9.0%	75	17.31	77.3%	34.7%	8.0%	12	91.7%	50.0%	0	
Alex Syrotynski	136	7	17.00	71.3%	8.62	59.4%	16	45	35.6%	57	143	39.9%	45	86	52.3%	44	69	63.8%	22	28	78.6%	22	41	53.7%	1	17	5.9%	11.9%	7	14.43	71.4%	28.6%	0.0%	0			50	46.0%
Alex Hasiotis	176	4	16.04	68.9%	8.39	53.3%	16	45	35.6%	48	180	26.7%	76	132	57.6%	73	112	65.2%	37	48	77.1%	36	64	56.3%	3	20	15.0%	11.1%	0					80	65.0%	31.3%	2	0.0%
TRADITIONAL	1445	5	17.14	72.1%	8.46	56.1%	0	0		491	1450	33.9%	554	959	57.8%	537	825	65.1%	258	323	79.9%	279	502	55.6%	17	134	12.7%	9.2%	145	16.01	64.8%	31.0%	9.0%	145	71.7%	30.3%	145	37.9%
Soon a	2	0	9.00	50.0%	6.50	50.0%	0	0		0	2	0.0%	1	2	50.0%	1	2	50.0%	1	1	100.0%	0	1	0.0%	0	0	0.0%	0	1	10.00	100.0%	0.0%	0.0%	0			0	
Steele	120	0	18.73	80.8%	8.79	64.2%	0	0		48	120	40.0%	49	72	68.1%	47	61	77.0%	27	29	93.1%	20	32	62.5%	2	11	18.2%	9.2%	12	15.75	66.7%	16.7%	0.0%	12	66.7%	33.3%	12	50.0%
Slomba	20	0	14.85	55.0%	7.40	35.0%	0	0		3	20	15.0%	8	17	47.1%	8	14	57.1%	2	4	50.0%	6	10	60.0%	0	3	0.0%	15.0%	2	28.50	100.0%	100.0%	100.0%	2	0.0%	0.0%	2	0.0%
Christina Aldridge	106	1	16.97	71.0%	8.30	53.3%	0	0		36	107	33.6%	40	71	56.3%	39	65	60.0%	16	21	76.2%	23	44	52.3%	1	6	16.7%	5.6%	12	17.50	75.0%	33.3%	16.7%	8	87.5%	50.0%	10	40.0%
Katie Good	249	2	17.40	73.3%	8.52	54.6%	0	0		85	251	33.9%	99	166	59.6%	96	144	66.7%	42	52	80.8%	54	92	58.7%	3	22	13.6%	8.8%	24	17.50	66.7%	37.5%	16.7%	28	71.4%	25.0%	26	26.9%
Katlyn Newberry	239	1	16.58	67.9%	8.42	56.3%	0	0		78	240	32.5%	85	162	52.5%	84	133	63.2%	45	57	78.9%	39	76	51.3%	1	29	3.4%	12.1%	23	15.00	52.2%	26.1%	13.0%	24	75.0%	29.2%	23	34.8%
Kaitlyn OHara	50	0	17.20	70.0%	8.72	64.0%	0	0		20	50	40.0%	15	30	50.0%	15	25	60.0%	9	12	75.0%	6	13	46.2%	0	5	0.0%	10.0%	6	15.33	66.7%	16.7%	0.0%	5	40.0%	40.0%	5	80.0%
Adrianna Pencek	221	0	16.70	71.5%	8.31	52.9%	0	0		72	221	32.6%	86	149	57.7%	84	133	63.2%	33	45	73.3%	51	88	58.0%	2	16	12.5%	7.2%	20	16.40	80.0%	45.0%	0.0%	23	87.0%	26.1%	24	41.7%
Alex Syrotynski	219	1	17.43	73.2%	8.47	58.6%	0	0		77	220	35.0%	84	143	58.7%	81	124	65.3%	44	52	84.6%	37	72	51.4%	3	19	15.8%	8.6%	21	16.05	66.7%	28.6%	4.8%	22	45.5%	13.6%	22	31.8%
Alex Hasiotis	219	0	17.08	72.6%	8.55	55.7%	0	0		72	219	32.9%	87	147	59.2%	82	124	66.1%	39	50	78.0%	43	74	58.1%	5	23	21.7%	10.5%	24	13.92	50.0%	25.0%	4.2%	21	90.5%	52.4%	21	42.9%
Grand Total	2768	32	16.97	72.0%	8.46	56.3%	125	391	32.0%	929	2800	33.2%	1088	1871	58.2%	1047	1610	65.0%	500	647	77.3%	547	963	56.8%	41	261	15.7%	9.3%	280	16.69	69.3%	32.9%	11.4%	280	70.4%	30.4%	280	37.5%

division Event FORMAT

DAEMEN COLLEGE
PERFORMANCE PERCENTAGES - SELECT STATISTICAL CATEGORIES - ALL FORMATS
2018-2019 SEASON YTD



Values

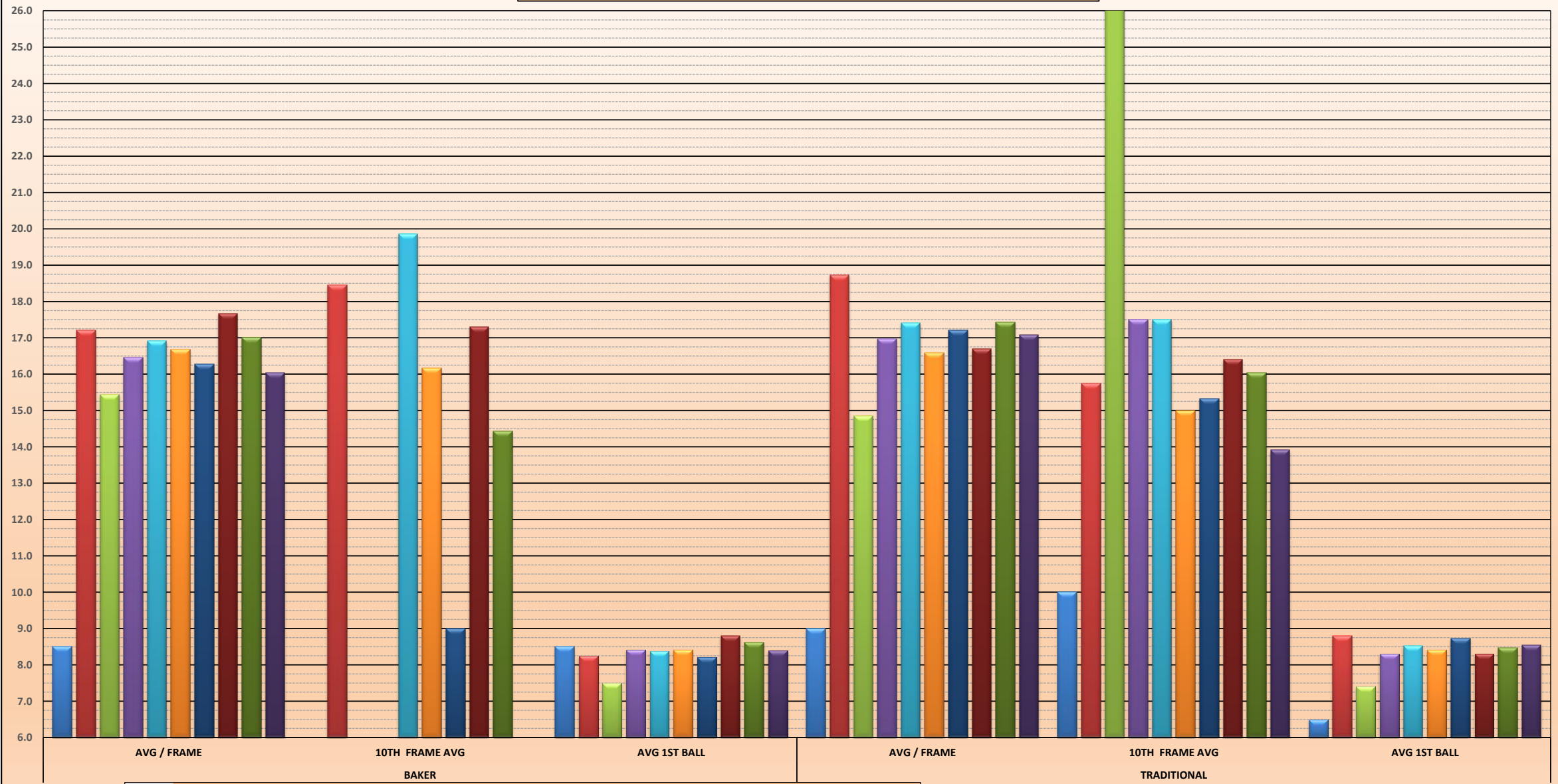
Bowler

- Soon a
- Steele
- Slomba
- Christina Aldridge
- Katie Good
- Katlyn Newberry
- Kaitlyn OHara
- Adrianna Pencek
- Alex Syrotynski
- Alex Hasiotis

division Event

AVG / FRAME 10TH FRAME AVG AVG 1ST BALL

DAEMEN COLLEGE
PERFORMANCE AVERAGES - SELECT CATEGORIES BY FORMAT BY BOWLERS
2018-19 SEASON YTD



Bowler
■ Soon a ■ Steele ■ Slomba ■ Christina Aldridge ■ Katie Good ■ Katlyn Newberry ■ Kaitlyn OHara ■ Adrianna Pencek ■ Alex Syrotynski ■ Alex Hasiotis

FORMAT Values

DAEMEN COLLEGE

2018-19 TEAM STATISTICS BY EVENT BY FORMAT BY PLAYER

division	(All)																																					
	All Bowlers																								ANCHOR BOWLER					LEADOFF BOWLER			4TH BOWLER					
Row Labels	COMPLET E FRAMES	INCOMPL ETE FRAMES	AVG / FRAME	OVER- ALL FILL %	AVG 1ST BALL	1ST BALL "9+ %"	BAKER DBL STRIKES	BAKER DBL ATTPTS	BAKER DBL %	STRIKES	STRIKE ATTPTS	STRIKE %	ALL SPARES	ALL SPARE ATTPTS	ALL SPARE CONV %	MAKE- ABLE SPARES	MAKE- ABLE SPARE ATTPTS	MAKE- ABLE SPARE %	SINGLE PIN SPARES	SINGLE PIN SPARE ATTPTS	SINGLE PIN SPARE CONV %	MULTI- PIN MAKE- ABLE SPARES	MULTI- PIN MAKE- ABLE ATTPTS	MULTI- PIN MAKE- ABLE CONV %	SPLIT- SPARES	SPLIT ATTPTS	SPLIT CONV %	SPLIT LEAVE %	10TH FRAME ATTPTS	10TH FRAME AVG	10TH FRAME FILL %	10TH FRAME STRIKE %	10TH FRAME DBL %	LEAD- OFF ATTPTS	LEAD- OFF FILL %	LEAD- OFF STRIKE %	SETUP ATTPTS	SETUP %
BUD WHITMAN MEMORIAL	497	3	16.23	69.0%	8.25	50.2%	12	54	22.2%	139	500	27.8%	206	361	57.1%	199	319	62.4%	85	112	75.9%	114	207	55.1%	7	42	16.7%	8.4%	50	14.90	60.0%	24.0%	6.0%	50	66.0%	26.0%	50	16.0%
BAKER	248	2	15.86	67.2%	8.23	47.2%	12	54	22.2%	64	250	25.6%	104	186	55.9%	100	161	62.1%	38	54	70.4%	62	107	57.9%	4	25	16.0%	10.0%	25	16.48	68.0%	40.0%	12.0%	25	72.0%	28.0%	25	16.0%
Soon a	2	0	8.50	0.0%	8.50	50.0%	0	0		0	2	0.0%	0	2	0.0%	0	2	0.0%	0	1	0.0%	0	1	0.0%	0	0		0.0%	0					0			0	
Steele	45	0	16.84	75.6%	8.07	40.0%	1	11	9.1%	12	45	26.7%	22	33	66.7%	22	30	73.3%	5	6	83.3%	17	24	70.8%	0	3	0.0%	6.7%	5	17.00	60.0%	40.0%	20.0%	12	75.0%	25.0%	0	
Christina Aldridge	11	1	16.73	91.7%	7.42	33.3%	0	4	0.0%	2	12	16.7%	9	10	90.0%	8	9	88.9%	1	2	50.0%	7	7	100.0%	1	1	100.0%	8.3%	0					0			3	33.3%
Katie Good	47	0	16.94	70.2%	8.40	51.1%	2	4	50.0%	18	47	38.3%	15	29	51.7%	14	25	56.0%	6	6	100.0%	8	19	42.1%	1	4	25.0%	8.5%	2	24.00	100.0%	100.0%	50.0%	12	66.7%	33.3%	1	100.0%
Katlyn Newberry	49	0	15.08	57.1%	8.22	44.9%	3	7	42.9%	13	49	26.5%	15	36	41.7%	13	28	46.4%	5	9	55.6%	8	19	42.1%	2	8	25.0%	16.3%	10	16.90	70.0%	40.0%	10.0%	0			15	13.3%
Kaitlyn OHara	23	1	16.09	75.0%	8.21	50.0%	1	8	12.5%	4	24	16.7%	14	20	70.0%	14	19	73.7%	5	8	62.5%	9	11	81.8%	0	1	0.0%	4.2%	1	9.00	0.0%	0.0%	0.0%	1	100.0%	0.0%	4	0.0%
Adrianna Pencek	50	0	16.02	68.0%	8.52	60.0%	4	14	28.6%	12	50	24.0%	22	38	57.9%	22	33	66.7%	13	18	72.2%	9	15	60.0%	0	5	0.0%	10.0%	0					0			0	
Alex Syrotynski	17	0	13.88	58.8%	8.00	41.2%	1	4	25.0%	3	17	17.6%	7	14	50.0%	7	12	58.3%	3	4	75.0%	4	8	50.0%	0	2	0.0%	11.8%	7	14.43	71.4%	28.6%	0.0%	0			0	
Alex Hasiotis	4	0	8.25	0.0%	7.50	0.0%	0	2	0.0%	0	4	0.0%	0	4	0.0%	0	3	0.0%	0	0		0	3	0.0%	0	1	0.0%	25.0%	0					0			2	0.0%
TRADITIONAL	249	1	16.59	70.8%	8.28	53.2%	0	0		75	250	30.0%	102	175	58.3%	99	158	62.7%	47	58	81.0%	52	100	52.0%	3	17	17.6%	6.8%	25	13.32	52.0%	8.0%	0.0%	25	60.0%	24.0%	25	16.0%
Soon a	2	0	9.00	50.0%	6.50	50.0%	0	0		0	2	0.0%	1	2	50.0%	1	2	50.0%	1	1	100.0%	0	1	0.0%	0	0		0.0%	1	10.00	100.0%	0.0%	0.0%	0			0	
Steele	50	0	18.54	84.0%	8.74	66.0%	0	0		17	50	34.0%	25	33	75.8%	25	29	86.2%	15	16	93.8%	10	13	76.9%	0	4	0.0%	8.0%	5	16.80	80.0%	0.0%	0.0%	5	60.0%	20.0%	5	20.0%
Christina Aldridge	21	0	16.67	76.2%	6.95	47.6%	0	0		6	21	28.6%	10	15	66.7%	9	14	64.3%	4	4	100.0%	5	10	50.0%	1	1	100.0%	4.8%	2	17.50	100.0%	50.0%	0.0%	2	100.0%	50.0%	2	0.0%
Katie Good	25	1	15.36	69.2%	8.15	38.5%	0	0		4	26	15.4%	14	22	63.6%	13	20	65.0%	5	6	83.3%	8	14	57.1%	1	2	50.0%	7.7%	2	13.50	50.0%	0.0%	0.0%	4	50.0%	0.0%	3	0.0%
Katlyn Newberry	54	0	16.37	66.7%	8.13	48.1%	0	0		16	54	29.6%	20	38	52.6%	20	36	55.6%	8	10	80.0%	12	26	46.2%	0	2	0.0%	3.7%	5	10.20	20.0%	0.0%	0.0%	5	60.0%	0.0%	5	0.0%
Kaitlyn OHara	29	0	18.41	75.9%	8.90	72.4%	0	0		13	29	44.8%	9	16	56.3%	9	14	64.3%	6	8	75.0%	3	6	50.0%	0	2	0.0%	6.9%	3	15.00	66.7%	0.0%	0.0%	3	66.7%	66.7%	3	66.7%
Adrianna Pencek	17	0	14.35	58.8%	8.29	52.9%	0	0		5	17	29.4%	5	12	41.7%	5	11	45.5%	2	4	50.0%	3	7	42.9%	0	1	0.0%	5.9%	1	7.00	0.0%	0.0%	0.0%	2	100.0%	50.0%	3	0.0%
Alex Syrotynski	36	0	16.00	66.7%	8.31	41.7%	0	0		10	36	27.8%	14	26	53.8%	14	22	63.6%	4	5	80.0%	10	17	58.8%	0	4	0.0%	11.1%	4	14.50	50.0%	25.0%	0.0%	3	0.0%	0.0%	3	33.3%
Alex Hasiotis	15	0	14.20	53.3%	8.27	53.3%	0	0		4	15	26.7%	4	11	36.4%	3	10	30.0%	2	4	50.0%	1	6	16.7%	1	1	100.0%	6.7%	2	8.00	0.0%	0.0%	0.0%	1	100.0%	100.0%	1	0.0%

DAEMEN COLLEGE

2018-19 TEAM STATISTICS BY EVENT BY FORMAT BY PLAYER

division	(All)																																					
Row Labels	All Bowlers																								ANCHOR BOWLER					LEADOFF BOWLER			4TH BOWLER					
	COMPLET E FRAMES	INCOMPL ETE FRAMES	AVG / FRAME	OVER- ALL FILL %	AVG 1ST BALL	1ST BALL "9+ %"	BAKER DBL STRIKES	BAKER DBL ATTPTS	BAKER DBL %	STRIKES	STRIKE ATTPTS	STRIKE %	ALL SPARES	ALL SPARE ATTPTS	ALL SPARE CONV %	MAKE- ABLE SPARES	MAKE- ABLE SPARE ATTPTS	MAKE- ABLE SPARE %	SINGLE PIN SPARES	SINGLE PIN SPARE ATTPTS	SINGLE PIN SPARE CONV %	MULTI- PIN MAKE- ABLE SPARES	MULTI- PIN MAKE- ABLE ATTPTS	MULTI- PIN MAKE- ABLE CONV %	SPLIT- SPARES	SPLIT ATTPTS	SPLIT CONV %	SPLIT LEAVE %	10TH FRAME ATTPTS	10TH FRAME AVG	10TH FRAME FILL %	10TH FRAME STRIKE %	10TH FRAME DBL %	LEAD- OFF ATTPTS	LEAD- OFF FILL %	LEAD- OFF STRIKE %	SETUP ATTPTS	SETUP %
MEDAILLE INVITE	497	3	17.38	72.6%	8.53	58.2%	25	71	35.2%	176	500	35.2%	187	324	57.7%	175	276	63.4%	92	115	80.0%	83	161	51.6%	12	48	25.0%	9.6%	50	18.26	74.0%	34.0%	20.0%	50	66.0%	30.0%	50	46.0%
BAKER	247	3	17.17	73.6%	8.46	56.4%	25	71	35.2%	81	250	32.4%	103	169	60.9%	93	145	64.1%	49	60	81.7%	44	85	51.8%	10	24	41.7%	9.6%	25	19.60	76.0%	40.0%	32.0%	25	76.0%	28.0%	25	40.0%
Steele	50	0	17.98	70.0%	8.60	60.0%	8	21	38.1%	17	50	34.0%	18	33	54.5%	16	26	61.5%	9	13	69.2%	7	13	53.8%	2	7	28.6%	14.0%	25	19.60	76.0%	40.0%	32.0%	0			0	
Slomba	20	0	17.40	80.0%	8.20	45.0%	1	4	25.0%	7	20	35.0%	9	13	69.2%	7	11	63.6%	1	2	50.0%	6	9	66.7%	2	2	100.0%	10.0%	0					5	80.0%	20.0%	0	
Christina Aldridge	3	0	14.00	66.7%	5.33	0.0%	0	1	0.0%	0	3	0.0%	2	3	66.7%	1	2	50.0%	0	0		1	2	50.0%	1	1	100.0%	33.3%	0					0			0	
Katie Good	32	0	15.84	68.8%	8.41	50.0%	1	8	12.5%	8	32	25.0%	14	24	58.3%	14	22	63.6%	8	8	100.0%	6	14	42.9%	0	2	0.0%	6.3%	0					0			0	
Katlyn Newberry	44	0	15.98	70.5%	7.98	54.5%	4	11	36.4%	11	44	25.0%	20	33	60.6%	20	32	62.5%	9	13	69.2%	11	19	57.9%	0	1	0.0%	2.3%	0					10	60.0%	20.0%	0	
Kaitlyn OHara	12	1	16.67	76.9%	8.31	53.8%	1	4	25.0%	3	13	23.1%	7	10	70.0%	6	8	75.0%	4	4	100.0%	2	4	50.0%	1	2	50.0%	15.4%	0					0			0	
Adrianna Pencek	30	0	18.47	80.0%	8.80	63.3%	3	6	50.0%	12	30	40.0%	12	18	66.7%	10	14	71.4%	7	7	100.0%	3	7	42.9%	2	4	50.0%	13.3%	0					10	90.0%	40.0%	0	
Alex Syrotynski	48	2	17.83	76.0%	8.86	62.0%	5	13	38.5%	21	50	42.0%	17	29	58.6%	16	25	64.0%	8	10	80.0%	8	15	53.3%	1	4	25.0%	8.0%	0					0			25	40.0%
Alex Hasiotis	8	0	16.63	75.0%	8.75	62.5%	2	3	66.7%	2	8	25.0%	4	6	66.7%	3	5	60.0%	3	3	100.0%	0	2	0.0%	1	1	100.0%	12.5%	0					0			0	
TRADITIONAL	250	0	17.58	71.6%	8.60	60.0%	0	0		95	250	38.0%	84	155	54.2%	82	131	62.6%	43	55	78.2%	39	76	51.3%	2	24	8.3%	9.6%	25	16.92	72.0%	28.0%	8.0%	25	56.0%	32.0%	25	52.0%
Steele	50	0	19.44	84.0%	8.86	64.0%	0	0		22	50	44.0%	20	28	71.4%	18	23	78.3%	10	10	100.0%	8	13	61.5%	2	5	40.0%	10.0%	5	15.40	60.0%	20.0%	0.0%	5	60.0%	40.0%	5	80.0%
Katie Good	50	0	17.62	70.0%	8.72	62.0%	0	0		19	50	38.0%	16	31	51.6%	16	26	61.5%	9	12	75.0%	7	14	50.0%	0	5	0.0%	10.0%	5	21.40	80.0%	60.0%	40.0%	5	60.0%	60.0%	5	40.0%
Katlyn Newberry	29	0	15.38	58.6%	8.38	62.1%	0	0		11	29	37.9%	6	18	33.3%	6	14	42.9%	4	7	57.1%	2	7	28.6%	0	4	0.0%	13.8%	2	14.00	50.0%	50.0%	0.0%	3	100.0%	33.3%	3	66.7%
Kaitlyn OHara	21	0	15.52	61.9%	8.48	52.4%	0	0		7	21	33.3%	6	14	42.9%	6	11	54.5%	3	4	75.0%	3	7	42.9%	0	3	0.0%	14.3%	3	15.67	66.7%	33.3%	0.0%	2	0.0%	0.0%	2	100.0%
Adrianna Pencek	36	0	15.50	63.9%	7.81	41.7%	0	0		8	36	22.2%	15	28	53.6%	15	26	57.7%	5	7	71.4%	10	19	52.6%	0	2	0.0%	5.6%	2	13.00	50.0%	0.0%	0.0%	4	75.0%	25.0%	4	25.0%
Alex Syrotynski	50	0	19.80	78.0%	9.04	72.0%	0	0		25	50	50.0%	14	25	56.0%	14	23	60.9%	8	11	72.7%	6	12	50.0%	0	2	0.0%	4.0%	5	16.80	80.0%	20.0%	0.0%	5	20.0%	0.0%	5	40.0%
Alex Hasiotis	14	0	15.86	71.4%	8.43	50.0%	0	0		3	14	21.4%	7	11	63.6%	7	8	87.5%	4	4	100.0%	3	4	75.0%	0	3	0.0%	21.4%	3	18.00	100.0%	0.0%	0.0%	1	100.0%	100.0%	1	0.0%

DAEMEN COLLEGE

2018-19 TEAM STATISTICS BY EVENT BY FORMAT BY PLAYER

division	(All)																																					
Row Labels	All Bowlers																								ANCHOR BOWLER					LEADOFF BOWLER			4TH BOWLER					
	COMPLET E FRAMES	INCOMPL ETE FRAMES	AVG / FRAME	OVER- ALL FILL %	AVG 1ST BALL	1ST BALL "9+ %"	BAKER DBL STRIKES	BAKER DBL ATTPTS	BAKER DBL %	STRIKES	STRIKE ATTPTS	STRIKE %	ALL SPARES	ALL SPARE ATTPTS	ALL SPARE CONV %	MAKE- ABLE SPARES	MAKE- ABLE SPARE ATTPTS	MAKE- ABLE SPARE %	SINGLE PIN SPARES	SINGLE PIN SPARE ATTPTS	SINGLE PIN SPARE CONV %	MULTI- PIN MAKE- ABLE SPARES	MULTI- PIN MAKE- ABLE ATTPTS	MULTI- PIN MAKE- ABLE CONV %	SPLIT- SPARES	SPLIT ATTPTS	SPLIT CONV %	SPLIT LEAVE %	10TH FRAME ATTPTS	10TH FRAME AVG	10TH FRAME FILL %	10TH FRAME STRIKE %	10TH FRAME DBL %	LEAD- OFF ATTPTS	LEAD- OFF FILL %	LEAD- OFF STRIKE %	SETUP ATTPTS	SETUP %
NOVEMBER 30 - DUALS	157	3	17.15	69.4%	8.30	55.0%	6	21	28.6%	57	160	35.6%	54	103	52.4%	54	87	62.1%	23	31	74.2%	31	56	55.4%	0	16	0.0%	10.0%	16	17.94	62.5%	43.8%	37.5%	16	81.3%	31.3%	16	37.5%
BAKER	57	3	16.51	65.0%	8.12	53.3%	6	21	28.6%	22	60	36.7%	17	38	44.7%	17	30	56.7%	6	10	60.0%	11	20	55.0%	0	8	0.0%	13.3%	6	15.17	50.0%	16.7%	33.3%	6	83.3%	33.3%	6	33.3%
Steele	10	2	14.90	58.3%	7.25	58.3%	1	5	20.0%	5	12	41.7%	2	7	28.6%	2	7	28.6%	0	2	0.0%	2	5	40.0%	0	0	0.0%	0.0%	3	11.33	33.3%	0.0%	33.3%	0			3	33.3%
Slomba	12	0	15.17	58.3%	7.58	50.0%	2	4	50.0%	5	12	41.7%	2	7	28.6%	2	5	40.0%	1	1	100.0%	1	4	25.0%	0	2	0.0%	16.7%	0					0			0	0
Katie Good	12	0	20.17	83.3%	8.50	50.0%	0	3	0.0%	5	12	41.7%	5	7	71.4%	5	6	83.3%	1	1	100.0%	4	5	80.0%	0	1	0.0%	8.3%	3	19.00	66.7%	33.3%	33.3%	0			3	33.3%
Alex Syrotynski	12	0	14.00	41.7%	8.58	58.3%	2	5	40.0%	3	12	25.0%	2	9	22.2%	2	6	33.3%	2	4	50.0%	0	2	0.0%	0	3	0.0%	25.0%	0					0			0	0
Alex Hasiotis	11	1	18.18	83.3%	8.58	50.0%	1	4	25.0%	4	12	33.3%	6	8	75.0%	6	6	100.0%	2	2	100.0%	4	4	100.0%	0	2	0.0%	16.7%	0					6	83.3%	33.3%	0	0
TRADITIONAL	100	0	17.51	72.0%	8.40	56.0%	0	0		35	100	35.0%	37	65	56.9%	37	57	64.9%	17	21	81.0%	20	36	55.6%	0	8	0.0%	8.0%	10	19.60	70.0%	60.0%	40.0%	10	80.0%	30.0%	10	40.0%
Steele	20	0	17.45	65.0%	8.75	60.0%	0	0		9	20	45.0%	4	11	36.4%	4	9	44.4%	2	3	66.7%	2	6	33.3%	0	2	0.0%	10.0%	2	14.00	50.0%	50.0%	0.0%	2	100.0%	50.0%	2	50.0%
Slomba	20	0	14.85	55.0%	7.40	35.0%	0	0		3	20	15.0%	8	17	47.1%	8	14	57.1%	2	4	50.0%	6	10	60.0%	0	3	0.0%	15.0%	2	28.50	100.0%	100.0%	100.0%	2	0.0%	0.0%	2	0.0%
Katie Good	20	0	17.50	75.0%	8.40	50.0%	0	0		6	20	30.0%	9	14	64.3%	9	12	75.0%	4	4	100.0%	5	8	62.5%	0	2	0.0%	10.0%	2	19.50	50.0%	50.0%	50.0%	2	100.0%	0.0%	2	50.0%
Alex Syrotynski	20	0	19.90	100.0%	9.20	85.0%	0	0		8	20	40.0%	12	12	100.0%	12	12	100.0%	9	9	100.0%	3	3	100.0%	0	0	0.0%	0.0%	2	17.50	100.0%	50.0%	0.0%	2	100.0%	50.0%	2	50.0%
Alex Hasiotis	20	0	17.85	65.0%	8.25	50.0%	0	0		9	20	45.0%	4	11	36.4%	4	10	40.0%	0	1	0.0%	4	9	44.4%	0	1	0.0%	5.0%	2	18.50	50.0%	50.0%	50.0%	2	100.0%	50.0%	2	50.0%

DAEMEN COLLEGE

2018-19 TEAM STATISTICS BY EVENT BY FORMAT BY PLAYER

division	(All)																																					
Row Labels	All Bowlers																								ANCHOR BOWLER					LEADOFF BOWLER			4TH BOWLER					
	COMPLET E FRAMES	INCOMPL ETE FRAMES	AVG / FRAME	OVER- ALL FILL %	AVG 1ST BALL	1ST BALL "9+ %"	BAKER DBL STRIKES	BAKER DBL ATTPTS	BAKER DBL %	STRIKES	STRIKE ATTPTS	STRIKE %	ALL SPARES	ALL SPARE ATTPTS	ALL SPARE CONV %	MAKE- ABLE SPARES	MAKE- ABLE SPARE ATTPTS	MAKE- ABLE SPARE %	SINGLE PIN SPARES	SINGLE PIN SPARE ATTPTS	SINGLE PIN SPARE CONV %	MULTI- PIN MAKE- ABLE SPARES	MULTI- PIN MAKE- ABLE ATTPTS	MULTI- PIN MAKE- ABLE CONV %	SPLIT- SPARES	SPLIT ATTPTS	SPLIT CONV %	SPLIT LEAVE %	10TH FRAME ATTPTS	10TH FRAME AVG	10TH FRAME FILL %	10TH FRAME STRIKE %	10TH FRAME DBL %	LEAD- OFF ATTPTS	LEAD- OFF FILL %	LEAD- OFF STRIKE %	SETUP ATTPTS	SETUP %
KU KURE - BAKER	245	5	17.27	74.4%	8.52	58.0%	28	84	33.3%	93	250	37.2%	93	157	59.2%	93	135	68.9%	41	52	78.8%	52	83	62.7%	0	22	0.0%	8.8%	25	18.24	84.0%	36.0%	8.0%	25	64.0%	40.0%	25	52.0%
BAKER	245	5	17.27	74.4%	8.52	58.0%	28	84	33.3%	93	250	37.2%	93	157	59.2%	93	135	68.9%	41	52	78.8%	52	83	62.7%	0	22	0.0%	8.8%	25	18.24	84.0%	36.0%	8.0%	25	64.0%	40.0%	25	52.0%
Slomba	12	0	13.17	50.0%	6.58	33.3%	1	4	25.0%	3	12	25.0%	3	9	33.3%	3	8	37.5%	0	1	0.0%	3	7	42.9%	0	1	0.0%	8.3%	0					0			0	
Christina Aldridge	21	1	14.95	63.6%	8.23	40.9%	1	9	11.1%	5	22	22.7%	9	17	52.9%	9	14	64.3%	4	4	100.0%	5	10	50.0%	0	3	0.0%	13.6%	0					0			0	
Katie Good	15	1	15.00	68.8%	7.63	31.3%	0	4	0.0%	4	16	25.0%	7	12	58.3%	7	11	63.6%	1	1	100.0%	6	10	60.0%	0	1	0.0%	6.3%	0					0			0	
Katlyn Newberry	49	1	18.06	76.0%	8.92	70.0%	8	13	61.5%	22	50	44.0%	16	28	57.1%	16	26	61.5%	9	13	69.2%	7	13	53.8%	0	2	0.0%	4.0%	0					0			0	
Adrianna Pencek	50	0	18.76	86.0%	8.84	62.0%	8	21	38.1%	21	50	42.0%	22	29	75.9%	22	25	88.0%	9	10	90.0%	13	15	86.7%	0	4	0.0%	8.0%	25	18.24	84.0%	36.0%	8.0%	0			0	
Alex Syrotynski	49	1	18.18	78.0%	8.54	60.0%	6	21	28.6%	21	50	42.0%	18	29	62.1%	18	24	75.0%	8	9	88.9%	10	15	66.7%	0	5	0.0%	10.0%	0					0			25	52.0%
Alex Hasiotis	49	1	16.76	70.0%	8.64	62.0%	4	12	33.3%	17	50	34.0%	18	33	54.5%	18	27	66.7%	10	14	71.4%	8	13	61.5%	0	6	0.0%	12.0%	0					25	64.0%	40.0%	0	

DAEMEN COLLEGE

2018-19 TEAM STATISTICS BY EVENT BY FORMAT BY PLAYER

division	(All)																																					
Row Labels	All Bowlers																								ANCHOR BOWLER					LEADOFF BOWLER			4TH BOWLER					
	COMPLET E FRAMES	INCOMPL ETE FRAMES	AVG / FRAME	OVER-ALL FILL %	AVG 1ST BALL	1ST BALL "9+ %" "	BAKER DBL STRIKES	BAKER DBL ATTPTS	BAKER DBL %	STRIKES	STRIKE ATTPTS	STRIKE %	ALL SPARES	ALL SPARE ATTPTS	ALL SPARE CONV %	MAKE-ABLE SPARES	MAKE-ABLE SPARE ATTPTS	MAKE-ABLE SPARE %	SINGLE PIN SPARES	SINGLE PIN SPARE ATTPTS	SINGLE PIN SPARE CONV %	MULTI-PIN MAKE-ABLE SPARES	MULTI-PIN MAKE-ABLE SPARE ATTPTS	MULTI-PIN MAKE-ABLE CONV %	SPLIT-SPARES	SPLIT ATTPTS	SPLIT CONV %	SPLIT LEAVE %	10TH FRAME ATTPTS	10TH FRAME AVG	10TH FRAME FILL %	10TH FRAME STRIKE %	10TH FRAME DBL %	LEAD-OFF ATTPTS	LEAD-OFF FILL %	LEAD-OFF STRIKE %	SETUP ATTPTS	SETUP %
KU KURE - TRADITIONAL	248	2	16.92	72.4%	8.42	52.8%	0	0		81	250	32.4%	100	169	59.2%	98	144	68.1%	44	51	86.3%	54	93	58.1%	2	25	8.0%	10.0%	25	16.52	72.0%	40.0%	4.0%	25	76.0%	12.0%	25	36.0%
TRADITIONAL	248	2	16.92	72.4%	8.42	52.8%	0	0		81	250	32.4%	100	169	59.2%	98	144	68.1%	44	51	86.3%	54	93	58.1%	2	25	8.0%	10.0%	25	16.52	72.0%	40.0%	4.0%	25	76.0%	12.0%	25	36.0%
Christina Aldridge	19	1	13.84	55.0%	8.10	35.0%	0	0		4	20	20.0%	7	16	43.8%	7	15	46.7%	3	3	100.0%	4	12	33.3%	0	1	0.0%	5.0%	2	19.00	100.0%	50.0%	0.0%	1	100.0%	0.0%	2	0.0%
Katie Good	50	0	17.62	74.0%	8.46	50.0%	0	0		18	50	36.0%	19	32	59.4%	19	28	67.9%	6	7	85.7%	13	21	61.9%	0	4	0.0%	8.0%	5	21.40	100.0%	60.0%	20.0%	5	100.0%	0.0%	5	40.0%
Katlyn Newberry	50	0	16.08	66.0%	8.46	56.0%	0	0		17	50	34.0%	16	33	48.5%	16	25	64.0%	9	11	81.8%	7	14	50.0%	0	8	0.0%	16.0%	5	12.20	40.0%	0.0%	0.0%	5	40.0%	20.0%	5	40.0%
Adrianna Pencek	48	0	17.81	81.3%	8.38	52.1%	0	0		18	48	37.5%	21	30	70.0%	19	26	73.1%	4	7	57.1%	15	19	78.9%	2	4	50.0%	8.3%	5	18.60	100.0%	60.0%	0.0%	5	100.0%	20.0%	5	60.0%
Alex Syrotynski	31	1	18.23	78.1%	8.47	59.4%	0	0		11	32	34.4%	14	21	66.7%	14	20	70.0%	8	8	100.0%	6	12	50.0%	0	1	0.0%	3.1%	3	16.33	66.7%	33.3%	0.0%	4	50.0%	0.0%	3	33.3%
Alex Hasiotis	50	0	16.56	72.0%	8.46	56.0%	0	0		13	50	26.0%	23	37	62.2%	23	30	76.7%	14	15	93.3%	9	15	60.0%	0	7	0.0%	14.0%	5	13.00	40.0%	40.0%	0.0%	5	80.0%	20.0%	5	20.0%

DAEMEN COLLEGE

2018-19 TEAM STATISTICS BY EVENT BY FORMAT BY PLAYER

division	(All)																																						
Row Labels	All Bowlers																								ANCHOR BOWLER					LEADOFF BOWLER			4TH BOWLER						
	COMPLET E FRAMES	INCOMPL ETE FRAMES	AVG / FRAME	OVER- ALL FILL %	AVG 1ST BALL	1ST BALL "9+ %"	BAKER DBL STRIKES	BAKER DBL ATTPTS	BAKER DBL %	STRIKES	STRIKE ATTPTS	STRIKE %	ALL SPARES	ALL SPARE ATTPTS	ALL SPARE CONV %	MAKE- ABLE SPARES	MAKE- ABLE SPARE ATTPTS	MAKE- ABLE SPARE %	SINGLE PIN SPARES	SINGLE PIN SPARE ATTPTS	SINGLE PIN SPARE CONV %	MULTI- PIN MAKE- ABLE SPARES	MULTI- PIN MAKE- ABLE ATTPTS	MULTI- PIN MAKE- ABLE CONV %	SPLIT- SPARES	SPLIT ATTPTS	SPLIT CONV %	SPLIT LEAVE %	10TH FRAME ATTPTS	10TH FRAME AVG	10TH FRAME FILL %	10TH FRAME STRIKE %	10TH FRAME DBL %	LEAD- OFF ATTPTS	LEAD- OFF FILL %	LEAD- OFF STRIKE %	SETUP ATTPTS	SETUP %	
FEB 10 DUAL VS PENNST BEH	144	6	17.07	74.0%	8.55	61.3%	6	17	35.3%	51	150	34.0%	60	99	60.6%	59	82	72.0%	36	41	87.8%	23	41	56.1%	1	17	5.9%	11.3%	15	16.33	66.7%	20.0%	13.3%	15	73.3%	40.0%	15	40.0%	
BAKER	44	6	17.61	80.0%	8.67	64.0%	6	17	35.3%	19	50	38.0%	21	31	67.7%	21	27	77.8%	10	13	76.9%	11	14	78.6%	0	4	0.0%	8.0%	5	19.80	100.0%	40.0%	20.0%	5	60.0%	20.0%	5	80.0%	
Slomba	1	1	7.00	50.0%	3.50	0.0%	0	0		0	2	0.0%	1	2	50.0%	1	1	100.0%	0	0		1	1	100.0%	0	1	0.0%	50.0%	0					0			0		
Christina Aldridge	2	0	14.00	50.0%	9.00	100.0%	0	0		0	2	0.0%	1	2	50.0%	1	2	50.0%	1	2	50.0%	0	0		0	0		0.0%	0						0			0	
Katie Good	9	1	17.78	90.0%	8.20	40.0%	1	6	16.7%	2	10	20.0%	7	8	87.5%	7	8	87.5%	2	2	100.0%	5	6	83.3%	0	0		0.0%	0						0			1	0.0%
Katlyn Newberry	6	2	20.00	100.0%	9.25	75.0%	1	2	50.0%	5	8	62.5%	3	3	100.0%	3	3	100.0%	1	1	100.0%	2	2	100.0%	0	0		0.0%	0						0			4	100.0%
Kaitlyn OHara	2	0	14.00	50.0%	8.50	50.0%	0	1	0.0%	0	2	0.0%	1	2	50.0%	1	2	50.0%	0	1	0.0%	1	1	100.0%	0	0		0.0%	0					1	100.0%	0.0%	0		
Adrianna Pencek	10	0	20.80	100.0%	9.50	100.0%	3	5	60.0%	5	10	50.0%	5	5	100.0%	5	5	100.0%	5	5	100.0%	0	0		0	0		0.0%	5	19.80	100.0%	40.0%	20.0%	0			0		
Alex Syrotynski	6	2	19.00	75.0%	9.25	75.0%	1	1	100.0%	6	8	75.0%	0	2	0.0%	0	0		0	0		0	0		0	2	0.0%	25.0%	0					0			0		
Alex Hasiotis	8	0	13.75	50.0%	7.88	37.5%	0	2	0.0%	1	8	12.5%	3	7	42.9%	3	6	50.0%	1	2	50.0%	2	4	50.0%	0	1	0.0%	12.5%	0					4	50.0%	25.0%	0		
TRADITIONAL	100	0	16.83	71.0%	8.50	60.0%	0	0		32	100	32.0%	39	68	57.4%	38	55	69.1%	26	28	92.9%	12	27	44.4%	1	13	7.7%	13.0%	10	14.60	50.0%	10.0%	10.0%	10	80.0%	50.0%	10	20.0%	
Katie Good	20	0	18.90	70.0%	9.05	65.0%	0	0		11	20	55.0%	3	9	33.3%	3	7	42.9%	2	2	100.0%	1	5	20.0%	0	2	0.0%	10.0%	2	9.00	0.0%	0.0%	0.0%	2	50.0%	50.0%	2	0.0%	
Katlyn Newberry	20	0	17.30	75.0%	8.65	70.0%	0	0		5	20	25.0%	10	15	66.7%	10	11	90.9%	9	9	100.0%	1	2	50.0%	0	4	0.0%	20.0%	2	23.50	100.0%	50.0%	50.0%	2	100.0%	50.0%	2	0.0%	
Adrianna Pencek	20	0	17.25	80.0%	8.45	70.0%	0	0		6	20	30.0%	10	14	71.4%	10	13	76.9%	7	8	87.5%	3	5	60.0%	0	1	0.0%	5.0%	2	14.50	50.0%	0.0%	0.0%	2	100.0%	50.0%	2	0.0%	
Alex Syrotynski	20	0	16.10	70.0%	8.10	45.0%	0	0		6	20	30.0%	8	14	57.1%	7	10	70.0%	3	3	100.0%	4	7	57.1%	1	4	25.0%	20.0%	2	13.00	50.0%	0.0%	0.0%	2	100.0%	50.0%	2	50.0%	
Alex Hasiotis	20	0	14.60	60.0%	8.25	50.0%	0	0		4	20	20.0%	8	16	50.0%	8	14	57.1%	5	6	83.3%	3	8	37.5%	0	2	0.0%	10.0%	2	13.00	50.0%	0.0%	0.0%	2	50.0%	50.0%	2	50.0%	

DAEMEN COLLEGE

2018-19 TEAM STATISTICS BY EVENT BY FORMAT BY PLAYER

division	(All)																																					
Row Labels	All Bowlers																								ANCHOR BOWLER					LEADOFF BOWLER			4TH BOWLER					
	COMPLET E FRAMES	INCOMPL ETE FRAMES	AVG / FRAME	OVER-ALL FILL %	AVG 1ST BALL	1ST BALL "9+ %"	BAKER DBL STRIKES	BAKER DBL ATTPTS	BAKER DBL %	STRIKES	STRIKE ATTPTS	STRIKE %	ALL SPARES	ALL SPARE ATTPTS	ALL SPARE CONV %	MAKE-ABLE SPARES	MAKE-ABLE SPARE ATTPTS	MAKE-ABLE SPARE %	SINGLE PIN SPARES	SINGLE PIN SPARE ATTPTS	SINGLE PIN SPARE CONV %	MULTI-PIN MAKE-ABLE SPARES	MULTI-PIN MAKE-ABLE SPARE ATTPTS	MULTI-PIN MAKE-ABLE CONV %	SPLIT-SPARES	SPLIT ATTPTS	SPLIT CONV %	SPLIT LEAVE %	10TH FRAME ATTPTS	10TH FRAME AVG	10TH FRAME FILL %	10TH FRAME STRIKE %	10TH FRAME DBL %	LEAD-OFF ATTPTS	LEAD-OFF FILL %	LEAD-OFF STRIKE %	SETUP ATTPTS	SETUP %
PAT LACY	248	2	17.40	73.6%	8.56	56.0%	0	0		85	250	34.0%	99	165	60.0%	92	139	66.2%	42	55	76.4%	50	84	59.5%	7	26	26.9%	10.4%	25	17.72	76.0%	48.0%	16.0%	25	84.0%	28.0%	25	52.0%
TRADITIONAL	248	2	17.40	73.6%	8.56	56.0%	0	0		85	250	34.0%	99	165	60.0%	92	139	66.2%	42	55	76.4%	50	84	59.5%	7	26	26.9%	10.4%	25	17.72	76.0%	48.0%	16.0%	25	84.0%	28.0%	25	52.0%
Christina Aldridge	36	0	19.36	77.8%	9.03	66.7%	0	0		16	36	44.4%	12	20	60.0%	12	18	66.7%	6	8	75.0%	6	10	60.0%	0	2	0.0%	5.6%	4	21.25	75.0%	50.0%	50.0%	3	66.7%	66.7%	3	66.7%
Katie Good	34	1	16.59	74.3%	8.03	42.9%	0	0		7	35	20.0%	19	28	67.9%	17	24	70.8%	6	8	75.0%	11	16	68.8%	2	4	50.0%	11.4%	3	16.00	66.7%	0.0%	0.0%	5	80.0%	0.0%	4	25.0%
Katlyn Newberry	36	1	15.25	59.5%	8.51	54.1%	0	0		8	37	21.6%	14	29	48.3%	13	24	54.2%	8	12	66.7%	5	12	41.7%	1	5	20.0%	13.5%	4	15.75	50.0%	25.0%	25.0%	4	75.0%	25.0%	3	66.7%
Adrianna Pencek	50	0	17.24	72.0%	8.48	56.0%	0	0		18	50	36.0%	18	32	56.3%	18	28	64.3%	8	10	80.0%	10	18	55.6%	0	4	0.0%	8.0%	5	17.40	100.0%	80.0%	0.0%	5	100.0%	20.0%	5	60.0%
Alex Syrotynski	42	0	16.12	66.7%	8.36	54.8%	0	0		13	42	31.0%	15	29	51.7%	14	23	60.9%	8	10	80.0%	6	13	46.2%	1	6	16.7%	14.3%	4	19.00	75.0%	50.0%	25.0%	3	66.7%	0.0%	5	20.0%
Alex Hasiotis	50	0	19.30	88.0%	8.88	60.0%	0	0		23	50	46.0%	21	27	77.8%	18	22	81.8%	6	7	85.7%	12	15	80.0%	3	5	60.0%	10.0%	5	16.80	80.0%	60.0%	0.0%	5	100.0%	60.0%	5	80.0%

DAEMEN COLLEGE

2018-19 TEAM STATISTICS BY EVENT BY FORMAT BY PLAYER

division	(All)																																					
Row Labels	All Bowlers																								ANCHOR BOWLER					LEADOFF BOWLER			4TH BOWLER					
	COMPLET E FRAMES	INCOMPL ETE FRAMES	AVG / FRAME	OVER-ALL FILL %	AVG 1ST BALL	1ST BALL "9+ %"	BAKER DBL STRIKES	BAKER DBL ATTPTS	BAKER DBL %	STRIKES	STRIKE ATTPTS	STRIKE %	ALL SPARES	ALL SPARE ATTPTS	ALL SPARE CONV %	MAKE-ABLE SPARES	MAKE-ABLE SPARE ATTPTS	MAKE-ABLE SPARE %	SINGLE PIN SPARES	SINGLE PIN SPARE ATTPTS	SINGLE PIN SPARE CONV %	MULTI-PIN MAKE-ABLE SPARES	MULTI-PIN MAKE-ABLE ATTPTS	MULTI-PIN MAKE-ABLE CONV %	SPLIT-SPARES	SPLIT ATTPTS	SPLIT CONV %	SPLIT LEAVE %	10TH FRAME ATTPTS	10TH FRAME AVG	10TH FRAME FILL %	10TH FRAME STRIKE %	10TH FRAME DBL %	LEAD-OFF ATTPTS	LEAD-OFF FILL %	LEAD-OFF STRIKE %	SETUP ATTPTS	SETUP %
FEB 16 DUAL	150	0	16.53	70.0%	8.35	54.0%	0	0		46	150	30.7%	59	104	56.7%	58	91	63.7%	25	35	71.4%	33	56	58.9%	1	13	7.7%	8.7%	15	14.67	53.3%	33.3%	6.7%	15	73.3%	46.7%	15	40.0%
TRADITIONAL	150	0	16.53	70.0%	8.35	54.0%	0	0		46	150	30.7%	59	104	56.7%	58	91	63.7%	25	35	71.4%	33	56	58.9%	1	13	7.7%	8.7%	15	14.67	53.3%	33.3%	6.7%	15	73.3%	46.7%	15	40.0%
Christina Aldridge	20	0	16.00	65.0%	8.55	55.0%	0	0		7	20	35.0%	6	13	46.2%	6	11	54.5%	2	4	50.0%	4	7	57.1%	0	2	0.0%	10.0%	3	11.00	33.3%	0.0%	0.0%	1	100.0%	100.0%	2	50.0%
Katie Good	30	0	18.20	86.7%	8.63	66.7%	0	0		10	30	33.3%	16	20	80.0%	16	20	80.0%	9	10	90.0%	7	10	70.0%	0	0		0.0%	3	15.67	66.7%	33.3%	0.0%	3	66.7%	66.7%	3	0.0%
Katlyn Newberry	30	0	16.97	70.0%	8.30	46.7%	0	0		10	30	33.3%	11	20	55.0%	11	15	73.3%	3	4	75.0%	8	11	72.7%	0	5	0.0%	16.7%	3	19.00	66.7%	66.7%	33.3%	3	100.0%	33.3%	3	33.3%
Adrianna Pencek	30	0	16.57	63.3%	8.53	56.7%	0	0		12	30	40.0%	7	18	38.9%	7	16	43.8%	3	5	60.0%	4	11	36.4%	0	2	0.0%	6.7%	3	16.33	66.7%	66.7%	0.0%	3	66.7%	33.3%	3	66.7%
Alex Syrotynski	10	0	11.40	40.0%	6.50	40.0%	0	0		0	10	0.0%	4	10	40.0%	4	9	44.4%	3	4	75.0%	1	5	20.0%	0	1	0.0%	10.0%	0					2	0.0%	0.0%	1	0.0%
Alex Hasiotis	30	0	16.47	73.3%	8.40	50.0%	0	0		7	30	23.3%	15	23	65.2%	14	20	70.0%	5	8	62.5%	9	12	75.0%	1	3	33.3%	10.0%	3	11.33	33.3%	0.0%	0.0%	3	100.0%	66.7%	3	66.7%

DAEMEN COLLEGE

2018-19 TEAM STATISTICS BY EVENT BY FORMAT BY PLAYER

division	(All)																																						
Row Labels	All Bowlers																								ANCHOR BOWLER					LEADOFF BOWLER			4TH BOWLER						
	COMPLET E FRAMES	INCOMPL ETE FRAMES	AVG / FRAME	OVER-ALL FILL %	AVG 1ST BALL	1ST BALL "9+ %"	BAKER DBL STRIKES	BAKER DBL ATTPTS	BAKER DBL %	STRIKES	STRIKE ATTPTS	STRIKE %	ALL SPARES	ALL SPARE ATTPTS	ALL SPARE CONV %	MAKE-ABLE SPARES	MAKE-ABLE SPARE ATTPTS	MAKE-ABLE SPARE %	SINGLE PIN SPARES	SINGLE PIN SPARE ATTPTS	SINGLE PIN SPARE CONV %	MULTI-PIN MAKE-ABLE SPARES	MULTI-PIN MAKE-ABLE ATTPTS	MULTI-PIN MAKE-ABLE CONV %	SPLIT-SPARES	SPLIT ATTPTS	SPLIT CONV %	SPLIT LEAVE %	10TH FRAME ATTPTS	10TH FRAME AVG	10TH FRAME FILL %	10TH FRAME STRIKE %	10TH FRAME DBL %	LEAD-OFF ATTPTS	LEAD-OFF FILL %	LEAD-OFF STRIKE %	SETUP ATTPTS	SETUP %	
MAR 2 DUAL VS RW	94	6	17.03	74.0%	8.37	54.0%	3	13	23.1%	36	100	36.0%	38	64	59.4%	37	56	66.1%	16	18	88.9%	21	38	55.3%	1	8	12.5%	8.0%	10	13.40	50.0%	10.0%	0.0%	10	50.0%	40.0%	10	30.0%	
BAKER	44	6	15.07	70.0%	8.16	48.0%	3	13	23.1%	13	50	26.0%	22	37	59.5%	22	32	68.8%	11	11	100.0%	11	21	52.4%	0	5	0.0%	10.0%	5	12.00	40.0%	0.0%	0.0%	5	20.0%	0.0%	5	40.0%	
Christina Aldridge	3	1	22.33	100.0%	9.25	75.0%	0	0		2	4	50.0%	2	2	100.0%	2	2	100.0%	1	1	100.0%	1	1	100.0%	0	0		0.0%	0					0			0		
Katie Good	9	1	14.89	70.0%	8.00	40.0%	1	5	20.0%	2	10	20.0%	5	8	62.5%	5	7	71.4%	2	2	100.0%	3	5	60.0%	0	1	0.0%	10.0%	0						0			2	0.0%
Katlyn Newberry	10	0	15.70	70.0%	8.40	60.0%	0	2	0.0%	4	10	40.0%	3	6	50.0%	3	5	60.0%	2	2	100.0%	1	3	33.3%	0	1	0.0%	10.0%	2	12.50	50.0%	0.0%	0.0%	0			3	66.7%	
Kaitlyn OHara	3	1	17.67	100.0%	7.75	25.0%	0	1	0.0%	0	4	0.0%	4	4	100.0%	4	4	100.0%	1	1	100.0%	3	3	100.0%	0	0		0.0%	0						0			0	
Adrianna Pencek	6	0	14.50	66.7%	8.00	33.3%	0	2	0.0%	0	6	0.0%	4	6	66.7%	4	5	80.0%	2	2	100.0%	2	3	66.7%	0	1	0.0%	16.7%	3	11.67	33.3%	0.0%	0.0%	0			0		
Alex Syrotynski	4	2	11.75	66.7%	8.50	66.7%	1	1	100.0%	3	6	50.0%	1	3	33.3%	1	2	50.0%	1	1	100.0%	0	1	0.0%	0	1	0.0%	16.7%	0						0			0	
Alex Hasiotis	9	1	13.11	50.0%	7.80	40.0%	1	2	50.0%	2	10	20.0%	3	8	37.5%	3	7	42.9%	2	2	100.0%	1	5	20.0%	0	1	0.0%	10.0%	0					5	20.0%	0.0%	0		
TRADITIONAL	50	0	18.76	78.0%	8.56	60.0%	0	0		23	50	46.0%	16	27	59.3%	15	24	62.5%	5	7	71.4%	10	17	58.8%	1	3	33.3%	6.0%	5	14.80	60.0%	20.0%	0.0%	5	80.0%	80.0%	5	20.0%	
Katie Good	10	0	20.20	90.0%	9.10	70.0%	0	0		6	10	60.0%	3	4	75.0%	3	4	75.0%	1	1	100.0%	2	3	66.7%	0	0		0.0%	1	20.00	100.0%	100.0%	0.0%	1	100.0%	100.0%	1	0.0%	
Katlyn Newberry	10	0	23.80	100.0%	8.90	70.0%	0	0		7	10	70.0%	3	3	100.0%	3	3	100.0%	0	0		3	3	100.0%	0	0		0.0%	1	19.00	100.0%	0.0%	0.0%	1	100.0%	100.0%	1	100.0%	
Adrianna Pencek	10	0	14.40	60.0%	7.90	40.0%	0	0		2	10	20.0%	4	8	50.0%	4	6	66.7%	2	2	100.0%	2	4	50.0%	0	2	0.0%	20.0%	1	17.00	100.0%	0.0%	0.0%	1	0.0%	0.0%	1	0.0%	
Alex Syrotynski	10	0	17.60	70.0%	8.00	60.0%	0	0		4	10	40.0%	3	6	50.0%	2	5	40.0%	1	2	50.0%	1	3	33.3%	1	1	100.0%	10.0%	1	9.00	0.0%	0.0%	0.0%	1	100.0%	100.0%	1	0.0%	
Alex Hasiotis	10	0	17.80	70.0%	8.90	60.0%	0	0		4	10	40.0%	3	6	50.0%	3	6	50.0%	1	2	50.0%	2	4	50.0%	0	0		0.0%	1	9.00	0.0%	0.0%	0.0%	1	100.0%	100.0%	1	0.0%	

DAEMEN COLLEGE

2018-19 TEAM STATISTICS BY EVENT BY FORMAT BY PLAYER

division	(All)																																					
Row Labels	All Bowlers																								ANCHOR BOWLER					LEADOFF BOWLER			4TH BOWLER					
	COMPLET E FRAMES	INCOMPL ETE FRAMES	AVG / FRAME	OVER-ALL FILL %	AVG 1ST BALL	1ST BALL "9+ %"	BAKER DBL STRIKES	BAKER DBL ATTPTS	BAKER DBL %	STRIKES	STRIKE ATTPTS	STRIKE %	ALL SPARES	ALL SPARE ATTPTS	ALL SPARE CONV %	MAKE-ABLE SPARES	MAKE-ABLE SPARE ATTPTS	MAKE-ABLE SPARE %	SINGLE PIN SPARES	SINGLE PIN SPARE ATTPTS	SINGLE PIN SPARE CONV %	MULTI-PIN MAKE-ABLE SPARES	MULTI-PIN MAKE-ABLE ATTPTS	MULTI-PIN MAKE-ABLE CONV %	SPLIT-SPARES	SPLIT ATTPTS	SPLIT CONV %	SPLIT LEAVE %	10TH FRAME ATTPTS	10TH FRAME AVG	10TH FRAME FILL %	10TH FRAME STRIKE %	10TH FRAME DBL %	LEAD-OFF ATTPTS	LEAD-OFF FILL %	LEAD-OFF STRIKE %	SETUP ATTPTS	SETUP %
ECC CHAMPIONSHIPS	438	2	16.97	72.7%	8.57	61.4%	45	131	34.4%	146	440	33.2%	174	294	59.2%	164	255	64.3%	87	124	70.2%	77	131	58.8%	10	39	25.6%	8.9%	44	16.86	75.0%	34.1%	6.8%	44	70.5%	31.8%	44	34.1%
BAKER	438	2	16.97	72.7%	8.57	61.4%	45	131	34.4%	146	440	33.2%	174	294	59.2%	164	255	64.3%	87	124	70.2%	77	131	58.8%	10	39	25.6%	8.9%	44	16.86	75.0%	34.1%	6.8%	44	70.5%	31.8%	44	34.1%
Christina Aldridge	88	0	16.74	65.9%	8.66	62.5%	7	22	31.8%	30	88	34.1%	28	58	48.3%	27	48	56.3%	14	25	56.0%	13	23	56.5%	1	10	10.0%	11.4%	0					0			0	
Katie Good	87	1	17.29	78.4%	8.51	56.8%	12	30	40.0%	28	88	31.8%	41	60	68.3%	37	54	68.5%	17	22	77.3%	20	32	62.5%	4	6	66.7%	6.8%	2	17.00	100.0%	0.0%	0.0%	2	50.0%	0.0%	0	
Katlyn Newberry	88	0	17.06	72.7%	8.43	62.5%	8	30	26.7%	31	88	35.2%	33	57	57.9%	31	49	63.3%	18	24	75.0%	13	25	52.0%	2	8	25.0%	9.1%	0					0			44	34.1%
Adrianna Pencek	88	0	17.58	73.9%	8.90	71.6%	10	29	34.5%	35	88	39.8%	30	53	56.6%	29	46	63.0%	19	28	67.9%	10	18	55.6%	1	7	14.3%	8.0%	42	16.86	73.8%	35.7%	7.1%	2	100.0%	100.0%	0	
Alex Hasiotis	87	1	16.18	72.7%	8.34	53.4%	8	20	40.0%	22	88	25.0%	42	66	63.6%	40	58	69.0%	19	25	76.0%	21	33	63.6%	2	8	25.0%	9.1%	0					40	70.0%	30.0%	0	

DAEMEN COLLEGE

2018-19 TEAM STATISTICS BY EVENT BY FORMAT BY PLAYER

division	(All)																																					
Row Labels	All Bowlers																								ANCHOR BOWLER					LEADOFF BOWLER			4TH BOWLER					
	COMPLET E FRAMES	INCOMPL ETE FRAMES	AVG / FRAME	OVER-ALL FILL %	AVG 1ST BALL	1ST BALL "9+ %"	BAKER DBL STRIKES	BAKER DBL ATTPTS	BAKER DBL %	STRIKES	STRIKE ATTPTS	STRIKE %	ALL SPARES	ALL SPARE ATTPTS	ALL SPARE CONV %	MAKE-ABLE SPARES	MAKE-ABLE SPARE ATTPTS	MAKE-ABLE SPARE %	SINGLE PIN SPARES	SINGLE PIN SPARE ATTPTS	SINGLE PIN SPARE CONV %	MULTI-PIN MAKE-ABLE SPARES	MULTI-PIN MAKE-ABLE ATTPTS	MULTI-PIN MAKE-ABLE CONV %	SPLIT-SPARES	SPLIT ATTPTS	SPLIT CONV %	SPLIT LEAVE %	10TH FRAME ATTPTS	10TH FRAME AVG	10TH FRAME FILL %	10TH FRAME STRIKE %	10TH FRAME DBL %	LEAD-OFF ATTPTS	LEAD-OFF FILL %	LEAD-OFF STRIKE %	SETUP ATTPTS	SETUP %
MARCH 19 DUAL	50	0	17.58	74.0%	8.76	64.0%	0	0		19	50	38.0%	18	31	58.1%	18	26	69.2%	9	13	69.2%	9	13	69.2%	0	5	0.0%	10.0%	5	14.80	60.0%	20.0%	0.0%	5	80.0%	20.0%	5	60.0%
TRADITIONAL	50	0	17.58	74.0%	8.76	64.0%	0	0		19	50	38.0%	18	31	58.1%	18	26	69.2%	9	13	69.2%	9	13	69.2%	0	5	0.0%	10.0%	5	14.80	60.0%	20.0%	0.0%	5	80.0%	20.0%	5	60.0%
Christina Aldridge	10	0	16.90	80.0%	8.40	50.0%	0	0		3	10	30.0%	5	7	71.4%	5	7	71.4%	1	2	50.0%	4	5	80.0%	0	0		0.0%	1	19.00	100.0%	0.0%	0.0%	1	100.0%	0.0%	1	100.0%
Katie Good	10	0	14.70	40.0%	8.60	60.0%	0	0		4	10	40.0%	0	6	0.0%	0	3	0.0%	0	2	0.0%	0	1	0.0%	0	3	0.0%	30.0%	1	7.00	0.0%	0.0%	0.0%	1	0.0%	0.0%	1	100.0%
Katlyn Newberry	10	0	18.60	90.0%	9.00	80.0%	0	0		4	10	40.0%	5	6	83.3%	5	5	100.0%	4	4	100.0%	1	1	100.0%	0	1	0.0%	10.0%	1	19.00	100.0%	100.0%	0.0%	1	100.0%	100.0%	1	0.0%
Adrianna Pencek	10	0	18.50	90.0%	8.50	50.0%	0	0		3	10	30.0%	6	7	85.7%	6	7	85.7%	2	2	100.0%	4	5	80.0%	0	0		0.0%	1	20.00	100.0%	0.0%	0.0%	1	100.0%	0.0%	1	100.0%
Alex Hasiotis	10	0	19.20	70.0%	9.30	80.0%	0	0		5	10	50.0%	2	5	40.0%	2	4	50.0%	2	3	66.7%	0	1	0.0%	0	1	0.0%	10.0%	1	9.00	0.0%	0.0%	0.0%	1	100.0%	0.0%	1	0.0%
Grand Total	2768	32	16.97	72.0%	8.46	56.3%	125	391	32.0%	929	2800	33.2%	1088	1871	58.2%	1047	1610	65.0%	500	647	77.3%	547	963	56.8%	41	261	15.7%	9.3%	280	16.69	69.3%	32.9%	11.4%	280	70.4%	30.4%	280	37.5%

DAEMEN COLLEGE

2018-19 TEAM STATISTICS BY PLAYER BY FORMAT BY EVENT

division (All)		All Bowlers																								ANCHOR BOWLER					LEADOFF BOWLER			4TH BOWLER				
Row Labels	COMPLET E FRAMES	INCOMPL ETE FRAMES	AVG / FRAME	OVER-ALL FILL %	AVG 1ST BALL	1ST BALL "9+ %"	BAKER DBL STRIKES	BAKER DBL ATTPPTS	BAKER DBL %	STRIKES	STRIKE ATTPPTS	STRIKE %	ALL SPARES	ALL SPARE ATTPPTS	ALL SPARE CONV %	MAKE-ABLE SPARES	MAKE-ABLE SPARE ATTPPTS	MAKE-ABLE SPARE %	SINGLE PIN SPARES	SINGLE PIN SPARE ATTPPTS	SINGLE PIN SPARE CONV %	MULTI-PIN MAKE-ABLE SPARES	MULTI-PIN MAKE-ABLE ATTPPTS	MULTI-PIN MAKE-ABLE CONV %	SPLIT-SPARES	SPLIT ATTPPTS	SPLIT CONV %	SPLIT LEAVE %	10TH FRAME ATTPPTS	10TH FRAME AVG	10TH FRAME FILL %	10TH FRAME STRIKE %	10TH FRAME DBL %	LEAD-OFF ATTPPTS	LEAD-OFF FILL %	LEAD-OFF STRIKE %	SETUP ATTPPTS	SETUP %
Soon a	4	0	8.75	25.0%	7.50	50.0%	0	0		0	4	0.0%	1	4	25.0%	1	4	25.0%	1	2	50.0%	0	2	0.0%	0	0	0	0.0%	1	10.00	100.0%	0.0%	0.0%	0			0	
BAKER	2	0	8.50	0.0%	8.50	50.0%	0	0		0	2	0.0%	0	2	0.0%	0	2	0.0%	0	1	0.0%	0	1	0.0%	0	0	0	0.0%	0					0			0	
BUD WHITMAN MEMORIAL	2	0	8.50	0.0%	8.50	50.0%	0	0		0	2	0.0%	0	2	0.0%	0	2	0.0%	0	1	0.0%	0	1	0.0%	0	0	0	0.0%	0					0			0	
TRADITIONAL	2	0	9.00	50.0%	6.50	50.0%	0	0		0	2	0.0%	1	2	50.0%	1	2	50.0%	1	1	100.0%	0	1	0.0%	0	0	0	0.0%	1	10.00	100.0%	0.0%	0.0%	0			0	
BUD WHITMAN MEMORIAL	2	0	9.00	50.0%	6.50	50.0%	0	0		0	2	0.0%	1	2	50.0%	1	2	50.0%	1	1	100.0%	0	1	0.0%	0	0	0	0.0%	1	10.00	100.0%	0.0%	0.0%	0			0	

DAEMEN COLLEGE

2018-19 TEAM STATISTICS BY PLAYER BY FORMAT BY EVENT

division (All)

Row Labels	All Bowlers																								ANCHOR BOWLER					LEADOFF BOWLER			4TH BOWLER					
	COMPLET E FRAMES	INCOMPL ETE FRAMES	AVG / FRAME	OVER- ALL FILL %	AVG 1ST BALL	1ST BALL "9+ %"	BAKER DBL STRIKES	BAKER DBL ATTPPTS	BAKER DBL %	STRIKES	STRIKE ATTPPTS	STRIKE %	ALL SPARES	ALL SPARE ATTPPTS	ALL SPARE CONV %	MAKE- ABLE SPARES	MAKE- ABLE SPARE ATTPPTS	MAKE- ABLE SPARE %	SINGLE PIN SPARES	SINGLE PIN SPARE ATTPPTS	SINGLE PIN SPARE CONV %	MULTI- PIN MAKE- ABLE SPARES	MULTI- PIN MAKE- ABLE SPARE ATTPPTS	MULTI- PIN MAKE- ABLE CONV %	SPLIT- SPARES	SPLIT ATTPPTS	SPLIT CONV %	SPLIT LEAVE %	10TH FRAME ATTPPTS	10TH FRAME AVG	10TH FRAME FILL %	10TH FRAME STRIKE %	10TH FRAME DBL %	LEAD- OFF ATTPPTS	LEAD- OFF %	LEAD- OFF STRIKE %	SETUP ATTPPTS	SETUP %
Steele	225	2	18.02	76.2%	8.54	58.1%	10	37	27.0%	82	227	36.1%	91	145	62.8%	87	124	70.2%	41	50	82.0%	46	74	62.2%	4	21	19.0%	9.3%	45	17.73	68.9%	31.1%	22.2%	24	70.8%	29.2%	15	46.7%
BAKER	105	2	17.20	71.0%	8.24	51.4%	10	37	27.0%	34	107	31.8%	42	73	57.5%	40	63	63.5%	14	21	66.7%	26	42	61.9%	2	10	20.0%	9.3%	33	18.45	69.7%	36.4%	30.3%	12	75.0%	25.0%	3	33.3%
BUD WHITMAN MEMORIAL	45	0	16.84	75.6%	8.07	40.0%	1	11	9.1%	12	45	26.7%	22	33	66.7%	22	30	73.3%	5	6	83.3%	17	24	70.8%	0	3	0.0%	6.7%	5	17.00	60.0%	40.0%	20.0%	12	75.0%	25.0%	0	
MEDAILLE INVITE	50	0	17.98	70.0%	8.60	60.0%	8	21	38.1%	17	50	34.0%	18	33	54.5%	16	26	61.5%	9	13	69.2%	7	13	53.8%	2	7	28.6%	14.0%	25	19.60	76.0%	40.0%	32.0%	0			0	
NOVEMBER 30 - DUALS	10	2	14.90	58.3%	7.25	58.3%	1	5	20.0%	5	12	41.7%	2	7	28.6%	2	7	28.6%	0	2	0.0%	2	5	40.0%	0	0		0.0%	3	11.33	33.3%	0.0%	33.3%	0			3	33.3%
TRADITIONAL	120	0	18.73	80.8%	8.79	64.2%	0	0		48	120	40.0%	49	72	68.1%	47	61	77.0%	27	29	93.1%	20	32	62.5%	2	11	18.2%	9.2%	12	15.75	66.7%	16.7%	0.0%	12	66.7%	33.3%	12	50.0%
BUD WHITMAN MEMORIAL	50	0	18.54	84.0%	8.74	66.0%	0	0		17	50	34.0%	25	33	75.8%	25	29	86.2%	15	16	93.8%	10	13	76.9%	0	4	0.0%	8.0%	5	16.80	80.0%	0.0%	0.0%	5	60.0%	20.0%	5	20.0%
MEDAILLE INVITE	50	0	19.44	84.0%	8.86	64.0%	0	0		22	50	44.0%	20	28	71.4%	18	23	78.3%	10	10	100.0%	8	13	61.5%	2	5	40.0%	10.0%	5	15.40	60.0%	20.0%	0.0%	5	60.0%	40.0%	5	80.0%
NOVEMBER 30 - DUALS	20	0	17.45	65.0%	8.75	60.0%	0	0		9	20	45.0%	4	11	36.4%	4	9	44.4%	2	3	66.7%	2	6	33.3%	0	2	0.0%	10.0%	2	14.00	50.0%	50.0%	0.0%	2	100.0%	50.0%	2	50.0%

DAEMEN COLLEGE

2018-19 TEAM STATISTICS BY PLAYER BY FORMAT BY EVENT

division (All)

Row Labels	All Bowlers																								ANCHOR BOWLER					LEADOFF BOWLER			4TH BOWLER					
	COMPLET E FRAMES	INCOMPL ETE FRAMES	AVG / FRAME	OVER- ALL FILL %	AVG 1ST BALL	1ST BALL "9+ %"	BAKER DBL STRIKES	BAKER DBL ATTPPTS	BAKER DBL %	STRIKES	STRIKE ATTPPTS	STRIKE %	ALL SPARES	ALL SPARE ATTPPTS	ALL SPARE CONV %	MAKE- ABLE SPARES	MAKE- ABLE SPARE ATTPPTS	MAKE- ABLE SPARE %	SINGLE PIN SPARES	SINGLE PIN SPARE ATTPPTS	SINGLE PIN SPARE CONV %	MULTI- PIN MAKE- ABLE SPARES	MULTI- PIN MAKE- ABLE ATTPPTS	MULTI- PIN MAKE- ABLE CONV %	SPLIT- SPARES	SPLIT ATTPPTS	SPLIT CONV %	SPLIT LEAVE %	10TH FRAME ATTPPTS	10TH FRAME AVG	10TH FRAME FILL %	10TH FRAME STRIKE %	10TH FRAME DBL %	LEAD- OFF ATTPPTS	LEAD- OFF %	LEAD- OFF STRIKE %	SETUP ATTPPTS	SETUP %
Slomba	65	1	15.26	62.1%	7.47	39.4%	4	12	33.3%	18	66	27.3%	23	48	47.9%	21	39	53.8%	4	8	50.0%	17	31	54.8%	2	9	22.2%	13.6%	2	28.50	100.0%	100.0%	100.0%	7	57.1%	14.3%	2	0.0%
BAKER	45	1	15.44	65.2%	7.50	41.3%	4	12	33.3%	15	46	32.6%	15	31	48.4%	13	25	52.0%	2	4	50.0%	11	21	52.4%	2	6	33.3%	13.0%	0					5	80.0%	20.0%	0	
MEDAILLE INVITE	20	0	17.40	80.0%	8.20	45.0%	1	4	25.0%	7	20	35.0%	9	13	69.2%	7	11	63.6%	1	2	50.0%	6	9	66.7%	2	2	100.0%	10.0%	0					5	80.0%	20.0%	0	
NOVEMBER 30 - DUALS	12	0	15.17	58.3%	7.58	50.0%	2	4	50.0%	5	12	41.7%	2	7	28.6%	2	5	40.0%	1	1	100.0%	1	4	25.0%	0	2	0.0%	16.7%	0					0			0	
KU KURE - BAKER	12	0	13.17	50.0%	6.58	33.3%	1	4	25.0%	3	12	25.0%	3	9	33.3%	3	8	37.5%	0	1	0.0%	3	7	42.9%	0	1	0.0%	8.3%	0					0			0	
FEB 10 DUAL VS PENNST BEH	1	1	7.00	50.0%	3.50	0.0%	0	0		0	2	0.0%	1	2	50.0%	1	1	100.0%	0	0		1	1	100.0%	0	1	0.0%	50.0%	0					0			0	
TRADITIONAL	20	0	14.85	55.0%	7.40	35.0%	0	0		3	20	15.0%	8	17	47.1%	8	14	57.1%	2	4	50.0%	6	10	60.0%	0	3	0.0%	15.0%	2	28.50	100.0%	100.0%	100.0%	2	0.0%	0.0%	2	0.0%
NOVEMBER 30 - DUALS	20	0	14.85	55.0%	7.40	35.0%	0	0		3	20	15.0%	8	17	47.1%	8	14	57.1%	2	4	50.0%	6	10	60.0%	0	3	0.0%	15.0%	2	28.50	100.0%	100.0%	100.0%	2	0.0%	0.0%	2	0.0%

DAEMEN COLLEGE

2018-19 TEAM STATISTICS BY PLAYER BY FORMAT BY EVENT

division (All)

Row Labels	All Bowlers																								ANCHOR BOWLER					LEADOFF BOWLER			4TH BOWLER					
	COMPLET E FRAMES	INCOMPL ETE FRAMES	AVG / FRAME	OVER- ALL FILL %	AVG 1ST BALL	1ST BALL "9+ %"	BAKER DBL STRIKES	BAKER DBL ATTPPTS	BAKER DBL %	STRIKES	STRIKE ATTPPTS	STRIKE %	ALL SPARES	ALL SPARE ATTPPTS	ALL SPARE CONV %	MAKE- ABLE SPARES	MAKE- ABLE SPARE ATTPPTS	MAKE- ABLE SPARE %	SINGLE PIN SPARES	SINGLE PIN SPARE ATTPPTS	SINGLE PIN SPARE CONV %	MULTI- PIN MAKE- ABLE SPARES	MULTI- PIN MAKE- ABLE ATTPPTS	MULTI- PIN MAKE- ABLE CONV %	SPLIT- SPARES	SPLIT ATTPPTS	SPLIT CONV %	SPLIT LEAVE %	10TH FRAME ATTPPTS	10TH FRAME AVG	10TH FRAME FILL %	10TH FRAME STRIKE %	10TH FRAME DBL %	LEAD- OFF ATTPPTS	LEAD- OFF %	LEAD- OFF STRIKE %	SETUP ATTPPTS	SETUP %
Christina Aldridge	234	4	16.70	69.7%	8.37	54.6%	8	36	22.2%	75	238	31.5%	91	163	55.8%	87	142	61.3%	37	55	67.3%	50	87	57.5%	4	21	19.0%	8.8%	12	17.50	75.0%	33.3%	16.7%	8	87.5%	50.0%	13	38.5%
BAKER	128	3	16.47	68.7%	8.42	55.7%	8	36	22.2%	39	131	29.8%	51	92	55.4%	48	77	62.3%	21	34	61.8%	27	43	62.8%	3	15	20.0%	11.5%	0					0			3	33.3%
BUD WHITMAN MEMORIAL	11	1	16.73	91.7%	7.42	33.3%	0	4	0.0%	2	12	16.7%	9	10	90.0%	8	9	88.9%	1	2	50.0%	7	7	100.0%	1	1	100.0%	8.3%	0					0			3	33.3%
MEDAILLE INVITE	3	0	14.00	66.7%	5.33	0.0%	0	1	0.0%	0	3	0.0%	2	3	66.7%	1	2	50.0%	0	0		1	2	50.0%	1	1	100.0%	33.3%	0					0			0	
KU KURE - BAKER	21	1	14.95	63.6%	8.23	40.9%	1	9	11.1%	5	22	22.7%	9	17	52.9%	9	14	64.3%	4	4	100.0%	5	10	50.0%	0	3	0.0%	13.6%	0					0			0	
FEB 10 DUAL VS PENNST BEH	2	0	14.00	50.0%	9.00	100.0%	0	0		0	2	0.0%	1	2	50.0%	1	2	50.0%	1	2	50.0%	0	0		0	0		0.0%	0					0			0	
MAR 2 DUAL VS RW	3	1	22.33	100.0%	9.25	75.0%	0	0		2	4	50.0%	2	2	100.0%	2	2	100.0%	1	1	100.0%	1	1	100.0%	0	0		0.0%	0					0			0	
ECC CHAMPIONSHIPS	88	0	16.74	65.9%	8.66	62.5%	7	22	31.8%	30	88	34.1%	28	58	48.3%	27	48	56.3%	14	25	56.0%	13	23	56.5%	1	10	10.0%	11.4%	0					0			0	
TRADITIONAL	106	1	16.97	71.0%	8.30	53.3%	0	0		36	107	33.6%	40	71	56.3%	39	65	60.0%	16	21	76.2%	23	44	52.3%	1	6	16.7%	5.6%	12	17.50	75.0%	33.3%	16.7%	8	87.5%	50.0%	10	40.0%
BUD WHITMAN MEMORIAL	21	0	16.67	76.2%	6.95	47.6%	0	0		6	21	28.6%	10	15	66.7%	9	14	64.3%	4	4	100.0%	5	10	50.0%	1	1	100.0%	4.8%	2	17.50	100.0%	50.0%	0.0%	2	100.0%	50.0%	2	0.0%
KU KURE - TRADITIONAL	19	1	13.84	55.0%	8.10	35.0%	0	0		4	20	20.0%	7	16	43.8%	7	15	46.7%	3	3	100.0%	4	12	33.3%	0	1	0.0%	5.0%	2	19.00	100.0%	50.0%	0.0%	1	100.0%	0.0%	2	0.0%
PAT LACY	36	0	19.36	77.8%	9.03	66.7%	0	0		16	36	44.4%	12	20	60.0%	12	18	66.7%	6	8	75.0%	6	10	60.0%	0	2	0.0%	5.6%	4	21.25	75.0%	50.0%	50.0%	3	66.7%	66.7%	3	66.7%
FEB 16 DUAL	20	0	16.00	65.0%	8.55	55.0%	0	0		7	20	35.0%	6	13	46.2%	6	11	54.5%	2	4	50.0%	4	7	57.1%	0	2	0.0%	10.0%	3	11.00	33.3%	0.0%	0.0%	1	100.0%	100.0%	2	50.0%
MARCH 19 DUAL	10	0	16.90	80.0%	8.40	50.0%	0	0		3	10	30.0%	5	7	71.4%	5	7	71.4%	1	2	50.0%	4	5	80.0%	0	0		0.0%	1	19.00	100.0%	0.0%	0.0%	1	100.0%	0.0%	1	100.0%

DAEMEN COLLEGE

2018-19 TEAM STATISTICS BY PLAYER BY FORMAT BY EVENT

division (All)

Row Labels	All Bowlers																								ANCHOR BOWLER					LEADOFF BOWLER			4TH BOWLER					
	COMPLET E FRAMES	INCOMPL ETE FRAMES	AVG / FRAME	OVER- ALL FILL %	AVG 1ST BALL	1ST BALL "9+ %"	BAKER DBL STRIKES	BAKER DBL ATTPPTS	BAKER DBL %	STRIKES	STRIKE ATTPPTS	STRIKE %	ALL SPARES	ALL SPARE ATTPPTS	ALL SPARE CONV %	MAKE- ABLE SPARES	MAKE- ABLE SPARE ATTPPTS	MAKE- ABLE SPARE %	SINGLE PIN SPARES	SINGLE PIN SPARE ATTPPTS	SINGLE PIN SPARE CONV %	MULTI- PIN MAKE- ABLE SPARES	MULTI- PIN MAKE- ABLE SPARE ATTPPTS	MULTI- PIN MAKE- ABLE CONV %	SPLIT- SPARES	SPLIT ATTPPTS	SPLIT CONV %	SPLIT LEAVE %	10TH FRAME ATTPPTS	10TH FRAME AVG	10TH FRAME FILL %	10TH FRAME STRIKE %	10TH FRAME DBL %	LEAD- OFF ATTPPTS	LEAD- OFF %	LEAD- OFF STRIKE %	SETUP ATTPPTS	SETUP %
Katie Good	460	6	17.18	74.0%	8.45	52.8%	17	60	28.3%	152	466	32.6%	193	314	61.5%	185	277	66.8%	79	94	84.0%	106	183	57.9%	8	37	21.6%	7.9%	31	18.03	71.0%	38.7%	19.4%	42	69.0%	26.2%	33	27.3%
BAKER	211	4	16.91	74.9%	8.37	50.7%	17	60	28.3%	67	215	31.2%	94	148	63.5%	89	133	66.9%	37	42	88.1%	52	91	57.1%	5	15	33.3%	7.0%	7	19.86	85.7%	42.9%	28.6%	14	64.3%	28.6%	7	28.6%
BUD WHITMAN MEMORIAL	47	0	16.94	70.2%	8.40	51.1%	2	4	50.0%	18	47	38.3%	15	29	51.7%	14	25	56.0%	6	6	100.0%	8	19	42.1%	1	4	25.0%	8.5%	2	24.00	100.0%	100.0%	50.0%	12	66.7%	33.3%	1	100.0%
MEDAILLE INVITE	32	0	15.84	68.8%	8.41	50.0%	1	8	12.5%	8	32	25.0%	14	24	58.3%	14	22	63.6%	8	8	100.0%	6	14	42.9%	0	2	0.0%	6.3%	0					0			0	0
NOVEMBER 30 - DUALS	12	0	20.17	83.3%	8.50	50.0%	0	3	0.0%	5	12	41.7%	5	7	71.4%	5	6	83.3%	1	1	100.0%	4	5	80.0%	0	1	0.0%	8.3%	3	19.00	66.7%	33.3%	33.3%	0			3	33.3%
KU KURE - BAKER	15	1	15.00	68.8%	7.63	31.3%	0	4	0.0%	4	16	25.0%	7	12	58.3%	7	11	63.6%	1	1	100.0%	6	10	60.0%	0	1	0.0%	6.3%	0					0			0	0
FEB 10 DUAL VS PENNST BEH	9	1	17.78	90.0%	8.20	40.0%	1	6	16.7%	2	10	20.0%	7	8	87.5%	7	8	87.5%	2	2	100.0%	5	6	83.3%	0	0		0.0%	0					0			1	0.0%
MAR 2 DUAL VS RW	9	1	14.89	70.0%	8.00	40.0%	1	5	20.0%	2	10	20.0%	5	8	62.5%	5	7	71.4%	2	2	100.0%	3	5	60.0%	0	1	0.0%	10.0%	0					0			2	0.0%
ECC CHAMPIONSHIPS	87	1	17.29	78.4%	8.51	56.8%	12	30	40.0%	28	88	31.8%	41	60	68.3%	37	54	68.5%	17	22	77.3%	20	32	62.5%	4	6	66.7%	6.8%	2	17.00	100.0%	0.0%	0.0%	2	50.0%	0.0%	0	
TRADITIONAL	249	2	17.40	73.3%	8.52	54.6%	0	0		85	251	33.9%	99	166	59.6%	96	144	66.7%	42	52	80.8%	54	92	58.7%	3	22	13.6%	8.8%	24	17.50	66.7%	37.5%	16.7%	28	71.4%	25.0%	26	26.9%
BUD WHITMAN MEMORIAL	25	1	15.36	69.2%	8.15	38.5%	0	0		4	26	15.4%	14	22	63.6%	13	20	65.0%	5	6	83.3%	8	14	57.1%	1	2	50.0%	7.7%	2	13.50	50.0%	0.0%	0.0%	4	50.0%	0.0%	3	0.0%
MEDAILLE INVITE	50	0	17.62	70.0%	8.72	62.0%	0	0		19	50	38.0%	16	31	51.6%	16	26	61.5%	9	12	75.0%	7	14	50.0%	0	5	0.0%	10.0%	5	21.40	80.0%	60.0%	40.0%	5	60.0%	60.0%	5	40.0%
NOVEMBER 30 - DUALS	20	0	17.50	75.0%	8.40	50.0%	0	0		6	20	30.0%	9	14	64.3%	9	12	75.0%	4	4	100.0%	5	8	62.5%	0	2	0.0%	10.0%	2	19.50	50.0%	50.0%	50.0%	2	100.0%	0.0%	2	50.0%
KU KURE - TRADITIONAL	50	0	17.62	74.0%	8.46	50.0%	0	0		18	50	36.0%	19	32	59.4%	19	28	67.9%	6	7	85.7%	13	21	61.9%	0	4	0.0%	8.0%	5	21.40	100.0%	60.0%	20.0%	5	100.0%	0.0%	5	40.0%
FEB 10 DUAL VS PENNST BEH	20	0	18.90	70.0%	9.05	65.0%	0	0		11	20	55.0%	3	9	33.3%	3	7	42.9%	2	2	100.0%	1	5	20.0%	0	2	0.0%	10.0%	2	9.00	0.0%	0.0%	0.0%	2	50.0%	50.0%	2	0.0%
PAT LACY	34	1	16.59	74.3%	8.03	42.9%	0	0		7	35	20.0%	19	28	67.9%	17	24	70.8%	6	8	75.0%	11	16	68.8%	2	4	50.0%	11.4%	3	16.00	66.7%	0.0%	0.0%	5	80.0%	0.0%	4	25.0%
FEB 16 DUAL	30	0	18.20	86.7%	8.63	66.7%	0	0		10	30	33.3%	16	20	80.0%	16	20	80.0%	9	10	90.0%	7	10	70.0%	0	0		0.0%	3	15.67	66.7%	33.3%	0.0%	3	66.7%	66.7%	3	0.0%
MAR 2 DUAL VS RW	10	0	20.20	90.0%	9.10	70.0%	0	0		6	10	60.0%	3	4	75.0%	3	4	75.0%	1	1	100.0%	2	3	66.7%	0	0		0.0%	1	20.00	100.0%	100.0%	0.0%	1	100.0%	100.0%	1	0.0%
MARCH 19 DUAL	10	0	14.70	40.0%	8.60	60.0%	0	0		4	10	40.0%	0	6	0.0%	0	3	0.0%	0	2	0.0%	0	1	0.0%	0	3	0.0%	30.0%	1	7.00	0.0%	0.0%	0.0%	1	0.0%	0.0%	1	100.0%

DAEMEN COLLEGE

2018-19 TEAM STATISTICS BY PLAYER BY FORMAT BY EVENT

division (All)

Row Labels	All Bowlers																								ANCHOR BOWLER					LEADOFF BOWLER			4TH BOWLER					
	COMPLET E FRAMES	INCOMPL ETE FRAMES	AVG / FRAME	OVER- ALL FILL %	AVG 1ST BALL	1ST BALL "9+ %"	BAKER DBL STRIKES	BAKER DBL ATTPTS	BAKER DBL %	STRIKES	STRIKE ATTPTS	STRIKE %	ALL SPARES	ALL SPARE ATTPTS	ALL SPARE CONV %	MAKE- ABLE SPARES	MAKE- ABLE SPARE ATTPTS	MAKE- ABLE SPARE %	SINGLE PIN SPARES	SINGLE PIN SPARE ATTPTS	SINGLE PIN SPARE CONV %	MULTI- PIN MAKE- ABLE SPARES	MULTI- PIN MAKE- ABLE ATTPTS	MULTI- PIN MAKE- ABLE CONV %	SPLIT- SPARES	SPLIT ATTPTS	SPLIT CONV %	SPLIT LEAVE %	10TH FRAME ATTPTS	10TH FRAME AVG	10TH FRAME FILL %	10TH FRAME STRIKE %	10TH FRAME DBL %	LEAD- OFF ATTPTS	LEAD- OFF %	LEAD- OFF STRIKE %	SETUP ATTPTS	SETUP %
Katlyn Newberry	485	4	16.63	69.3%	8.42	57.9%	24	65	36.9%	164	489	33.5%	175	325	53.8%	170	276	61.6%	89	119	74.8%	81	157	51.6%	5	49	10.2%	10.0%	35	15.40	57.1%	28.6%	11.4%	34	70.6%	26.5%	89	34.8%
BAKER	246	3	16.69	70.7%	8.43	59.4%	24	65	36.9%	86	249	34.5%	90	163	55.2%	86	143	60.1%	44	62	71.0%	42	81	51.9%	4	20	20.0%	8.0%	12	16.17	66.7%	33.3%	8.3%	10	60.0%	20.0%	66	34.8%
BUD WHITMAN MEMORIAL	49	0	15.08	57.1%	8.22	44.9%	3	7	42.9%	13	49	26.5%	15	36	41.7%	13	28	46.4%	5	9	55.6%	8	19	42.1%	2	8	25.0%	16.3%	10	16.90	70.0%	40.0%	10.0%	0			15	13.3%
MEDAILLE INVITE	44	0	15.98	70.5%	7.98	54.5%	4	11	36.4%	11	44	25.0%	20	33	60.6%	20	32	62.5%	9	13	69.2%	11	19	57.9%	0	1	0.0%	2.3%	0					10	60.0%	20.0%	0	
KU KURE - BAKER	49	1	18.06	76.0%	8.92	70.0%	8	13	61.5%	22	50	44.0%	16	28	57.1%	16	26	61.5%	9	13	69.2%	7	13	53.8%	0	2	0.0%	4.0%	0					0			0	
FEB 10 DUAL VS PENNST BEH	6	2	20.00	100.0%	9.25	75.0%	1	2	50.0%	5	8	62.5%	3	3	100.0%	3	3	100.0%	1	1	100.0%	2	2	100.0%	0	0		0.0%	0					0			4	100.0%
MAR 2 DUAL VS RW	10	0	15.70	70.0%	8.40	60.0%	0	2	0.0%	4	10	40.0%	3	6	50.0%	3	5	60.0%	2	2	100.0%	1	3	33.3%	0	1	0.0%	10.0%	2	12.50	50.0%	0.0%	0.0%	0			3	66.7%
ECC CHAMPIONSHIPS	88	0	17.06	72.7%	8.43	62.5%	8	30	26.7%	31	88	35.2%	33	57	57.9%	31	49	63.3%	18	24	75.0%	13	25	52.0%	2	8	25.0%	9.1%	0					0			44	34.1%
TRADITIONAL	239	1	16.58	67.9%	8.42	56.3%	0	0		78	240	32.5%	85	162	52.5%	84	133	63.2%	45	57	78.9%	39	76	51.3%	1	29	3.4%	12.1%	23	15.00	52.2%	26.1%	13.0%	24	75.0%	29.2%	23	34.8%
BUD WHITMAN MEMORIAL	54	0	16.37	66.7%	8.13	48.1%	0	0		16	54	29.6%	20	38	52.6%	20	36	55.6%	8	10	80.0%	12	26	46.2%	0	2	0.0%	3.7%	5	10.20	20.0%	0.0%	0.0%	5	60.0%	0.0%	5	0.0%
MEDAILLE INVITE	29	0	15.38	58.6%	8.38	62.1%	0	0		11	29	37.9%	6	18	33.3%	6	14	42.9%	4	7	57.1%	2	7	28.6%	0	4	0.0%	13.8%	2	14.00	50.0%	50.0%	0.0%	3	100.0%	33.3%	3	66.7%
KU KURE - TRADITIONAL	50	0	16.08	66.0%	8.46	56.0%	0	0		17	50	34.0%	16	33	48.5%	16	25	64.0%	9	11	81.8%	7	14	50.0%	0	8	0.0%	16.0%	5	12.20	40.0%	0.0%	0.0%	5	40.0%	20.0%	5	40.0%
FEB 10 DUAL VS PENNST BEH	20	0	17.30	75.0%	8.65	70.0%	0	0		5	20	25.0%	10	15	66.7%	10	11	90.9%	9	9	100.0%	1	2	50.0%	0	4	0.0%	20.0%	2	23.50	100.0%	50.0%	50.0%	2	100.0%	50.0%	2	0.0%
PAT LACY	36	1	15.25	59.5%	8.51	54.1%	0	0		8	37	21.6%	14	29	48.3%	13	24	54.2%	8	12	66.7%	5	12	41.7%	1	5	20.0%	13.5%	4	15.75	50.0%	25.0%	25.0%	4	75.0%	25.0%	3	66.7%
FEB 16 DUAL	30	0	16.97	70.0%	8.30	46.7%	0	0		10	30	33.3%	11	20	55.0%	11	15	73.3%	3	4	75.0%	8	11	72.7%	0	5	0.0%	16.7%	3	19.00	66.7%	66.7%	33.3%	3	100.0%	33.3%	3	33.3%
MAR 2 DUAL VS RW	10	0	23.80	100.0%	8.90	70.0%	0	0		7	10	70.0%	3	3	100.0%	3	3	100.0%	0	0		3	3	100.0%	0	0		0.0%	1	19.00	100.0%	0.0%	0.0%	1	100.0%	100.0%	1	100.0%
MARCH 19 DUAL	10	0	18.60	90.0%	9.00	80.0%	0	0		4	10	40.0%	5	6	83.3%	5	5	100.0%	4	4	100.0%	1	1	100.0%	0	1	0.0%	10.0%	1	19.00	100.0%	100.0%	0.0%	1	100.0%	100.0%	1	0.0%

DAEMEN COLLEGE

2018-19 TEAM STATISTICS BY PLAYER BY FORMAT BY EVENT

division (All)

Row Labels	All Bowlers																								ANCHOR BOWLER					LEADOFF BOWLER			4TH BOWLER					
	COMPLET E FRAMES	INCOMPL ETE FRAMES	AVG / FRAME	OVER- ALL FILL %	AVG 1ST BALL	1ST BALL "9+ %"	BAKER DBL STRIKES	BAKER DBL ATTPPTS	BAKER DBL %	STRIKES	STRIKE ATTPPTS	STRIKE %	ALL SPARES	ALL SPARE ATTPPTS	ALL SPARE CONV %	MAKE- ABLE SPARES	MAKE- ABLE SPARE ATTPPTS	MAKE- ABLE SPARE %	SINGLE PIN SPARES	SINGLE PIN SPARE ATTPPTS	SINGLE PIN SPARE CONV %	MULTI- PIN MAKE- ABLE SPARES	MULTI- PIN MAKE- ABLE ATTPPTS	MULTI- PIN MAKE- ABLE CONV %	SPLIT- SPARES	SPLIT ATTPPTS	SPLIT CONV %	SPLIT LEAVE %	10TH FRAME ATTPPTS	10TH FRAME AVG	10TH FRAME FILL %	10TH FRAME STRIKE %	10TH FRAME DBL %	LEAD- OFF ATTPPTS	LEAD- OFF %	LEAD- OFF STRIKE %	SETUP ATTPPTS	SETUP %
Kaitlyn OHara	90	3	16.79	73.1%	8.50	57.0%	2	14	14.3%	27	93	29.0%	41	66	62.1%	40	58	69.0%	19	26	73.1%	21	32	65.6%	1	8	12.5%	8.6%	7	14.43	57.1%	14.3%	0.0%	7	57.1%	28.6%	9	44.4%
BAKER	40	3	16.28	76.7%	8.22	48.8%	2	14	14.3%	7	43	16.3%	26	36	72.2%	25	33	75.8%	10	14	71.4%	15	19	78.9%	1	3	33.3%	7.0%	1	9.00	0.0%	0.0%	0.0%	2	100.0%	0.0%	4	0.0%
BUD WHITMAN MEMORIAL	23	1	16.09	75.0%	8.21	50.0%	1	8	12.5%	4	24	16.7%	14	20	70.0%	14	19	73.7%	5	8	62.5%	9	11	81.8%	0	1	0.0%	4.2%	1	9.00	0.0%	0.0%	0.0%	1	100.0%	0.0%	4	0.0%
MEDAILLE INVITE	12	1	16.67	76.9%	8.31	53.8%	1	4	25.0%	3	13	23.1%	7	10	70.0%	6	8	75.0%	4	4	100.0%	2	4	50.0%	1	2	50.0%	15.4%	0					0			0	
FEB 10 DUAL VS PENNST BEH	2	0	14.00	50.0%	8.50	50.0%	0	1	0.0%	0	2	0.0%	1	2	50.0%	1	2	50.0%	0	1	0.0%	1	1	100.0%	0	0		0.0%	0					1	100.0%	0.0%	0	
MAR 2 DUAL VS RW	3	1	17.67	100.0%	7.75	25.0%	0	1	0.0%	0	4	0.0%	4	4	100.0%	4	4	100.0%	1	1	100.0%	3	3	100.0%	0	0		0.0%	0					0			0	
TRADITIONAL	50	0	17.20	70.0%	8.72	64.0%	0	0		20	50	40.0%	15	30	50.0%	15	25	60.0%	9	12	75.0%	6	13	46.2%	0	5	0.0%	10.0%	6	15.33	66.7%	16.7%	0.0%	5	40.0%	40.0%	5	80.0%
BUD WHITMAN MEMORIAL	29	0	18.41	75.9%	8.90	72.4%	0	0		13	29	44.8%	9	16	56.3%	9	14	64.3%	6	8	75.0%	3	6	50.0%	0	2	0.0%	6.9%	3	15.00	66.7%	0.0%	0.0%	3	66.7%	66.7%	3	66.7%
MEDAILLE INVITE	21	0	15.52	61.9%	8.48	52.4%	0	0		7	21	33.3%	6	14	42.9%	6	11	54.5%	3	4	75.0%	3	7	42.9%	0	3	0.0%	14.3%	3	15.67	66.7%	33.3%	0.0%	2	0.0%	0.0%	2	100.0%

DAEMEN COLLEGE

2018-19 TEAM STATISTICS BY PLAYER BY FORMAT BY EVENT

division (All)

Row Labels	All Bowlers																								ANCHOR BOWLER					LEADOFF BOWLER			4TH BOWLER					
	COMPLET E FRAMES	INCOMPL ETE FRAMES	AVG / FRAME	OVER- ALL FILL %	AVG 1ST BALL	1ST BALL "9+ %"	BAKER DBL STRIKES	BAKER DBL ATTPPTS	BAKER DBL %	STRIKES	STRIKE ATTPPTS	STRIKE %	ALL SPARES	ALL SPARE ATTPPTS	ALL SPARE CONV %	MAKE- ABLE SPARES	MAKE- ABLE SPARE ATTPPTS	MAKE- ABLE SPARE %	SINGLE PIN SPARES	SINGLE PIN SPARE ATTPPTS	SINGLE PIN SPARE CONV %	MULTI- PIN MAKE- ABLE SPARES	MULTI- PIN MAKE- ABLE ATTPPTS	MULTI- PIN MAKE- ABLE CONV %	SPLIT- SPARES	SPLIT ATTPPTS	SPLIT CONV %	SPLIT LEAVE %	10TH FRAME ATTPPTS	10TH FRAME AVG	10TH FRAME FILL %	10TH FRAME STRIKE %	10TH FRAME DBL %	LEAD- OFF ATTPPTS	LEAD- OFF %	LEAD- OFF STRIKE %	SETUP ATTPPTS	SETUP %
Adrianna Pencek	455	0	17.20	74.3%	8.56	59.8%	28	77	36.4%	157	455	34.5%	181	298	60.7%	176	261	67.4%	88	115	76.5%	88	146	60.3%	5	37	13.5%	8.1%	95	17.12	77.9%	36.8%	6.3%	35	88.6%	34.3%	24	41.7%
BAKER	234	0	17.67	76.9%	8.79	66.2%	28	77	36.4%	85	234	36.3%	95	149	63.8%	92	128	71.9%	55	70	78.6%	37	58	63.8%	3	21	14.3%	9.0%	75	17.31	77.3%	34.7%	8.0%	12	91.7%	50.0%	0	
BUD WHITMAN MEMORIAL	50	0	16.02	68.0%	8.52	60.0%	4	14	28.6%	12	50	24.0%	22	38	57.9%	22	33	66.7%	13	18	72.2%	9	15	60.0%	0	5	0.0%	10.0%	0					0			0	
MEDAILLE INVITE	30	0	18.47	80.0%	8.80	63.3%	3	6	50.0%	12	30	40.0%	12	18	66.7%	10	14	71.4%	7	7	100.0%	3	7	42.9%	2	4	50.0%	13.3%	0					10	90.0%	40.0%	0	
KU KURE - BAKER	50	0	18.76	86.0%	8.84	62.0%	8	21	38.1%	21	50	42.0%	22	29	75.9%	22	25	88.0%	9	10	90.0%	13	15	86.7%	0	4	0.0%	8.0%	25	18.24	84.0%	36.0%	8.0%	0			0	
FEB 10 DUAL VS PENNST BEH	10	0	20.80	100.0%	9.50	100.0%	3	5	60.0%	5	10	50.0%	5	5	100.0%	5	5	100.0%	5	5	100.0%	0	0		0	0		0.0%	5	19.80	100.0%	40.0%	20.0%	0			0	
MAR 2 DUAL VS RW	6	0	14.50	66.7%	8.00	33.3%	0	2	0.0%	0	6	0.0%	4	6	66.7%	4	5	80.0%	2	2	100.0%	2	3	66.7%	0	1	0.0%	16.7%	3	11.67	33.3%	0.0%	0.0%	0			0	
ECC CHAMPIONSHIPS	88	0	17.58	73.9%	8.90	71.6%	10	29	34.5%	35	88	39.8%	30	53	56.6%	29	46	63.0%	19	28	67.9%	10	18	55.6%	1	7	14.3%	8.0%	42	16.86	73.8%	35.7%	7.1%	2	100.0%	100.0%	0	
TRADITIONAL	221	0	16.70	71.5%	8.31	52.9%	0	0		72	221	32.6%	86	149	57.7%	84	133	63.2%	33	45	73.3%	51	88	58.0%	2	16	12.5%	7.2%	20	16.40	80.0%	45.0%	0.0%	23	87.0%	26.1%	24	41.7%
BUD WHITMAN MEMORIAL	17	0	14.35	58.8%	8.29	52.9%	0	0		5	17	29.4%	5	12	41.7%	5	11	45.5%	2	4	50.0%	3	7	42.9%	0	1	0.0%	5.9%	1	7.00	0.0%	0.0%	0.0%	2	100.0%	50.0%	3	0.0%
MEDAILLE INVITE	36	0	15.50	63.9%	7.81	41.7%	0	0		8	36	22.2%	15	28	53.6%	15	26	57.7%	5	7	71.4%	10	19	52.6%	0	2	0.0%	5.6%	2	13.00	50.0%	0.0%	0.0%	4	75.0%	25.0%	4	25.0%
KU KURE - TRADITIONAL	48	0	17.81	81.3%	8.38	52.1%	0	0		18	48	37.5%	21	30	70.0%	19	26	73.1%	4	7	57.1%	15	19	78.9%	2	4	50.0%	8.3%	5	18.60	100.0%	60.0%	0.0%	5	100.0%	20.0%	5	60.0%
FEB 10 DUAL VS PENNST BEH	20	0	17.25	80.0%	8.45	70.0%	0	0		6	20	30.0%	10	14	71.4%	10	13	76.9%	7	8	87.5%	3	5	60.0%	0	1	0.0%	5.0%	2	14.50	50.0%	0.0%	0.0%	2	100.0%	50.0%	2	0.0%
PAT LACY	50	0	17.24	72.0%	8.48	56.0%	0	0		18	50	36.0%	18	32	56.3%	18	28	64.3%	8	10	80.0%	10	18	55.6%	0	4	0.0%	8.0%	5	17.40	100.0%	80.0%	0.0%	5	100.0%	20.0%	5	60.0%
FEB 16 DUAL	30	0	16.57	63.3%	8.53	56.7%	0	0		12	30	40.0%	7	18	38.9%	7	16	43.8%	3	5	60.0%	4	11	36.4%	0	2	0.0%	6.7%	3	16.33	66.7%	66.7%	0.0%	3	66.7%	33.3%	3	66.7%
MAR 2 DUAL VS RW	10	0	14.40	60.0%	7.90	40.0%	0	0		2	10	20.0%	4	8	50.0%	4	6	66.7%	2	2	100.0%	2	4	50.0%	0	2	0.0%	20.0%	1	17.00	100.0%	0.0%	0.0%	1	0.0%	0.0%	1	0.0%
MARCH 19 DUAL	10	0	18.50	90.0%	8.50	50.0%	0	0		3	10	30.0%	6	7	85.7%	6	7	85.7%	2	2	100.0%	4	5	80.0%	0	0		0.0%	1	20.00	100.0%	0.0%	0.0%	1	100.0%	0.0%	1	100.0%

DAEMEN COLLEGE

2018-19 TEAM STATISTICS BY PLAYER BY FORMAT BY EVENT

division (All)

Row Labels	All Bowlers																								ANCHOR BOWLER					LEADOFF BOWLER			4TH BOWLER					
	COMPLET E FRAMES	INCOMPL ETE FRAMES	AVG / FRAME	OVER- ALL FILL %	AVG 1ST BALL	1ST BALL "9+ %"	BAKER DBL STRIKES	BAKER DBL ATTPPTS	BAKER DBL %	STRIKES	STRIKE ATTPPTS	STRIKE %	ALL SPARES	ALL SPARE ATTPPTS	ALL SPARE CONV %	MAKE- ABLE SPARES	MAKE- ABLE SPARE ATTPPTS	MAKE- ABLE SPARE %	SINGLE PIN SPARES	SINGLE PIN SPARE ATTPPTS	SINGLE PIN SPARE CONV %	MULTI- PIN MAKE- ABLE SPARES	MULTI- PIN MAKE- ABLE ATTPPTS	MULTI- PIN MAKE- ABLE CONV %	SPLIT- SPARES	SPLIT ATTPPTS	SPLIT CONV %	SPLIT LEAVE %	10TH FRAME ATTPPTS	10TH FRAME AVG	10TH FRAME FILL %	10TH FRAME STRIKE %	10TH FRAME DBL %	LEAD- OFF ATTPPTS	LEAD- OFF %	LEAD- OFF STRIKE %	SETUP ATTPPTS	SETUP %
Alex Syrotynski	355	8	17.27	72.5%	8.53	59.0%	16	45	35.6%	134	363	36.9%	129	229	56.3%	125	193	64.8%	66	80	82.5%	59	113	52.2%	4	36	11.1%	9.9%	28	15.64	67.9%	28.6%	3.6%	22	45.5%	13.6%	72	41.7%
BAKER	136	7	17.00	71.3%	8.62	59.4%	16	45	35.6%	57	143	39.9%	45	86	52.3%	44	69	63.8%	22	28	78.6%	22	41	53.7%	1	17	5.9%	11.9%	7	14.43	71.4%	28.6%	0.0%	0			50	46.0%
BUD WHITMAN MEMORIAL	17	0	13.88	58.8%	8.00	41.2%	1	4	25.0%	3	17	17.6%	7	14	50.0%	7	12	58.3%	3	4	75.0%	4	8	50.0%	0	2	0.0%	11.8%	7	14.43	71.4%	28.6%	0.0%	0			0	
MEDAILLE INVITE	48	2	17.83	76.0%	8.86	62.0%	5	13	38.5%	21	50	42.0%	17	29	58.6%	16	25	64.0%	8	10	80.0%	8	15	53.3%	1	4	25.0%	8.0%	0					0			25	40.0%
NOVEMBER 30 - DUALS	12	0	14.00	41.7%	8.58	58.3%	2	5	40.0%	3	12	25.0%	2	9	22.2%	2	6	33.3%	2	4	50.0%	0	2	0.0%	0	3	0.0%	25.0%	0					0			0	
KU KURE - BAKER	49	1	18.18	78.0%	8.54	60.0%	6	21	28.6%	21	50	42.0%	18	29	62.1%	18	24	75.0%	8	9	88.9%	10	15	66.7%	0	5	0.0%	10.0%	0					0			25	52.0%
FEB 10 DUAL VS PENNST BEH	6	2	19.00	75.0%	9.25	75.0%	1	1	100.0%	6	8	75.0%	0	2	0.0%	0	0		0	0		0	0		0	2	0.0%	25.0%	0					0			0	
MAR 2 DUAL VS RW	4	2	11.75	66.7%	8.50	66.7%	1	1	100.0%	3	6	50.0%	1	3	33.3%	1	2	50.0%	1	1	100.0%	0	1	0.0%	0	1	0.0%	16.7%	0					0			0	
TRADITIONAL	219	1	17.43	73.2%	8.47	58.6%	0	0		77	220	35.0%	84	143	58.7%	81	124	65.3%	44	52	84.6%	37	72	51.4%	3	19	15.8%	8.6%	21	16.05	66.7%	28.6%	4.8%	22	45.5%	13.6%	22	31.8%
BUD WHITMAN MEMORIAL	36	0	16.00	66.7%	8.31	41.7%	0	0		10	36	27.8%	14	26	53.8%	14	22	63.6%	4	5	80.0%	10	17	58.8%	0	4	0.0%	11.1%	4	14.50	50.0%	25.0%	0.0%	3	0.0%	0.0%	3	33.3%
MEDAILLE INVITE	50	0	19.80	78.0%	9.04	72.0%	0	0		25	50	50.0%	14	25	56.0%	14	23	60.9%	8	11	72.7%	6	12	50.0%	0	2	0.0%	4.0%	5	16.80	80.0%	20.0%	0.0%	5	20.0%	0.0%	5	40.0%
NOVEMBER 30 - DUALS	20	0	19.90	100.0%	9.20	85.0%	0	0		8	20	40.0%	12	12	100.0%	12	12	100.0%	9	9	100.0%	3	3	100.0%	0	0		0.0%	2	17.50	100.0%	50.0%	0.0%	2	100.0%	50.0%	2	50.0%
KU KURE - TRADITIONAL	31	1	18.23	78.1%	8.47	59.4%	0	0		11	32	34.4%	14	21	66.7%	14	20	70.0%	8	8	100.0%	6	12	50.0%	0	1	0.0%	3.1%	3	16.33	66.7%	33.3%	0.0%	4	50.0%	0.0%	3	33.3%
FEB 10 DUAL VS PENNST BEH	20	0	16.10	70.0%	8.10	45.0%	0	0		6	20	30.0%	8	14	57.1%	7	10	70.0%	3	3	100.0%	4	7	57.1%	1	4	25.0%	20.0%	2	13.00	50.0%	0.0%	0.0%	2	100.0%	50.0%	2	50.0%
PAT LACY	42	0	16.12	66.7%	8.36	54.8%	0	0		13	42	31.0%	15	29	51.7%	14	23	60.9%	8	10	80.0%	6	13	46.2%	1	6	16.7%	14.3%	4	19.00	75.0%	50.0%	25.0%	3	66.7%	0.0%	5	20.0%
FEB 16 DUAL	10	0	11.40	40.0%	6.50	40.0%	0	0		0	10	0.0%	4	10	40.0%	4	9	44.4%	3	4	75.0%	1	5	20.0%	0	1	0.0%	10.0%	0					2	0.0%	0.0%	1	0.0%
MAR 2 DUAL VS RW	10	0	17.60	70.0%	8.00	60.0%	0	0		4	10	40.0%	3	6	50.0%	2	5	40.0%	1	2	50.0%	1	3	33.3%	1	1	100.0%	10.0%	1	9.00	0.0%	0.0%	0.0%	1	100.0%	100.0%	1	0.0%

DAEMEN COLLEGE

2018-19 TEAM STATISTICS BY PLAYER BY FORMAT BY EVENT

division (All)

Row Labels	All Bowlers																								ANCHOR BOWLER					LEADOFF BOWLER			4TH BOWLER					
	COMPLET E FRAMES	INCOMPL ETE FRAMES	AVG / FRAME	OVER- ALL FILL %	AVG 1ST BALL	1ST BALL "9+ %"	BAKER DBL STRIKES	BAKER DBL ATTPTS	BAKER DBL %	STRIKES	STRIKE ATTPTS	STRIKE %	ALL SPARES	ALL SPARE ATTPTS	ALL SPARE CONV %	MAKE- ABLE SPARE SPARES	MAKE- ABLE SPARE ATTPTS	MAKE- ABLE SPARE %	SINGLE PIN SPARES	SINGLE PIN SPARE ATTPTS	SINGLE PIN SPARE CONV %	MULTI- PIN MAKE- ABLE SPARES	MULTI- PIN MAKE- ABLE ATTPTS	MULTI- PIN MAKE- ABLE CONV %	SPLIT- SPARES	SPLIT ATTPTS	SPLIT CONV %	SPLIT LEAVE %	10TH FRAME ATTPTS	10TH FRAME AVG	10TH FRAME FILL %	10TH FRAME STRIKE %	10TH FRAME DBL %	LEAD- OFF ATTPTS	LEAD- OFF %	LEAD- OFF STRIKE %	SETUP ATTPTS	SETUP %
Alex Hasiotis	395	4	16.62	70.9%	8.48	54.6%	16	45	35.6%	120	399	30.1%	163	279	58.4%	155	236	65.7%	76	98	77.6%	79	138	57.2%	8	43	18.6%	10.8%	24	13.92	50.0%	25.0%	4.2%	101	70.3%	35.6%	23	39.1%
BAKER	176	4	16.04	68.9%	8.39	53.3%	16	45	35.6%	48	180	26.7%	76	132	57.6%	73	112	65.2%	37	48	77.1%	36	64	56.3%	3	20	15.0%	11.1%	0					80	65.0%	31.3%	2	0.0%
BUD WHITMAN MEMORIAL	4	0	8.25	0.0%	7.50	0.0%	0	2	0.0%	0	4	0.0%	0	4	0.0%	0	3	0.0%	0	0		0	3	0.0%	0	1	0.0%	25.0%	0					0			2	0.0%
MEDAILLE INVITE	8	0	16.63	75.0%	8.75	62.5%	2	3	66.7%	2	8	25.0%	4	6	66.7%	3	5	60.0%	3	3	100.0%	0	2	0.0%	1	1	100.0%	12.5%	0					0			0	0
NOVEMBER 30 - DUALS	11	1	18.18	83.3%	8.58	50.0%	1	4	25.0%	4	12	33.3%	6	8	75.0%	6	6	100.0%	2	2	100.0%	4	4	100.0%	0	2	0.0%	16.7%	0					6	83.3%	33.3%	0	0
KU KURE - BAKER	49	1	16.76	70.0%	8.64	62.0%	4	12	33.3%	17	50	34.0%	18	33	54.5%	18	27	66.7%	10	14	71.4%	8	13	61.5%	0	6	0.0%	12.0%	0					25	64.0%	40.0%	0	0
FEB 10 DUAL VS PENNST BEH	8	0	13.75	50.0%	7.88	37.5%	0	2	0.0%	1	8	12.5%	3	7	42.9%	3	6	50.0%	1	2	50.0%	2	4	50.0%	0	1	0.0%	12.5%	0					4	50.0%	25.0%	0	0
MAR 2 DUAL VS RW	9	1	13.11	50.0%	7.80	40.0%	1	2	50.0%	2	10	20.0%	3	8	37.5%	3	7	42.9%	2	2	100.0%	1	5	20.0%	0	1	0.0%	10.0%	0					5	20.0%	0.0%	0	0
ECC CHAMPIONSHIPS	87	1	16.18	72.7%	8.34	53.4%	8	20	40.0%	22	88	25.0%	42	66	63.6%	40	58	69.0%	19	25	76.0%	21	33	63.6%	2	8	25.0%	9.1%	0					40	70.0%	30.0%	0	0
TRADITIONAL	219	0	17.08	72.6%	8.55	55.7%	0	0		72	219	32.9%	87	147	59.2%	82	124	66.1%	39	50	78.0%	43	74	58.1%	5	23	21.7%	10.5%	24	13.92	50.0%	25.0%	4.2%	21	90.5%	52.4%	21	42.9%
BUD WHITMAN MEMORIAL	15	0	14.20	53.3%	8.27	53.3%	0	0		4	15	26.7%	4	11	36.4%	3	10	30.0%	2	4	50.0%	1	6	16.7%	1	1	100.0%	6.7%	2	8.00	0.0%	0.0%	0.0%	1	100.0%	100.0%	1	0.0%
MEDAILLE INVITE	14	0	15.86	71.4%	8.43	50.0%	0	0		3	14	21.4%	7	11	63.6%	7	8	87.5%	4	4	100.0%	3	4	75.0%	0	3	0.0%	21.4%	3	18.00	100.0%	0.0%	0.0%	1	100.0%	100.0%	1	0.0%
NOVEMBER 30 - DUALS	20	0	17.85	65.0%	8.25	50.0%	0	0		9	20	45.0%	4	11	36.4%	4	10	40.0%	0	1	0.0%	4	9	44.4%	0	1	0.0%	5.0%	2	18.50	50.0%	50.0%	50.0%	2	100.0%	50.0%	2	50.0%
KU KURE - TRADITIONAL	50	0	16.56	72.0%	8.46	56.0%	0	0		13	50	26.0%	23	37	62.2%	23	30	76.7%	14	15	93.3%	9	15	60.0%	0	7	0.0%	14.0%	5	13.00	40.0%	40.0%	0.0%	5	80.0%	20.0%	5	20.0%
FEB 10 DUAL VS PENNST BEH	20	0	14.60	60.0%	8.25	50.0%	0	0		4	20	20.0%	8	16	50.0%	8	14	57.1%	5	6	83.3%	3	8	37.5%	0	2	0.0%	10.0%	2	13.00	50.0%	0.0%	0.0%	2	50.0%	50.0%	2	50.0%
PAT LACY	50	0	19.30	88.0%	8.88	60.0%	0	0		23	50	46.0%	21	27	77.8%	18	22	81.8%	6	7	85.7%	12	15	80.0%	3	5	60.0%	10.0%	5	16.80	80.0%	60.0%	0.0%	5	100.0%	60.0%	5	80.0%
FEB 16 DUAL	30	0	16.47	73.3%	8.40	50.0%	0	0		7	30	23.3%	15	23	65.2%	14	20	70.0%	5	8	62.5%	9	12	75.0%	1	3	33.3%	10.0%	3	11.33	33.3%	0.0%	0.0%	3	100.0%	66.7%	3	66.7%
MAR 2 DUAL VS RW	10	0	17.80	70.0%	8.90	60.0%	0	0		4	10	40.0%	3	6	50.0%	3	6	50.0%	1	2	50.0%	2	4	50.0%	0	0	0.0%	0.0%	1	9.00	0.0%	0.0%	0.0%	1	100.0%	100.0%	1	0.0%
MARCH 19 DUAL	10	0	19.20	70.0%	9.30	80.0%	0	0		5	10	50.0%	2	5	40.0%	2	4	50.0%	2	3	66.7%	0	1	0.0%	0	1	0.0%	10.0%	1	9.00	0.0%	0.0%	0.0%	1	100.0%	0.0%	1	0.0%
Grand Total	2768	32	16.97	72.0%	8.46	56.3%	125	391	32.0%	929	2800	33.2%	1088	1871	58.2%	1047	1610	65.0%	500	647	77.3%	547	963	56.8%	41	261	15.7%	9.3%	280	16.69	69.3%	32.9%	11.4%	280	70.4%	30.4%	280	37.5%