

**DAEMEN COLLEGE**

**2017-18 BOWLING STATISTICS**

**3/28/2018 21:05**

DAEMEN COLLEGE

TEAM STATISTICS BY FORMAT BY EVENT

division	(All)																																					
Bowler	(Multiple Items)																																					
	All Bowlers																								ANCHOR BOWLER					LEADOFF BOWLER			4TH BOWLER					
Row Labels	COMPLETE FRAMES	INCOMPLETE FRAMES	AVG / FRAME	OVER-ALL FILL %	AVG 1ST BALL	1ST BALL "9+ %"	BAKER DBL STRIKES	BAKER DBL ATTPTS	BAKER DBL %	STRIKES	STRIKE ATTPTS	STRIKE %	ALL SPARES	ALL SPARE ATTPTS	ALL SPARE CONV %	MAKE-ABLE SPARES	MAKE-ABLE SPARE ATTPTS	MAKE-ABLE SPARE %	SINGLE PIN SPARES	SINGLE PIN SPARE ATTPTS	SINGLE PIN SPARE CONV %	MULTI-PIN MAKE-ABLE SPARES	MULTI-PIN MAKE-ABLE ATTPTS	MULTI-PIN MAKE-ABLE CONV %	SPLIT-SPARES	SPLIT ATTPTS	SPLIT CONV %	SPLIT LEAVE %	10TH FRAME ATTPTS	10TH FRAME AVG	10TH FRAME FILL %	10TH FRAME STRIKE %	10TH FRAME DBL %	LEAD-OFF ATTPTS	LEAD-OFF FILL %	LEAD-OFF STRIKE %	SETUP ATTPTS	SETUP %
<b>BAKER</b>	1882	28	17.05	72.6%	8.50	57.0%	212	559	37.9%	622	1910	32.6%	765	1288	59.4%	740	1105	67.0%	361	467	77.3%	379	638	59.4%	25	183	13.7%	9.6%	191	17.95	81.2%	33.0%	11.0%	191	71.2%	25.7%	191	37.2%
DUAL AT KENMORE	36	4	15.47	62.5%	8.15	47.5%	3	13	23.1%	14	40	35.0%	11	26	42.3%	10	18	55.6%	5	5	100.0%	5	13	38.5%	1	8	12.5%	20.0%	4	15.75	75.0%	25.0%	0.0%	4	50.0%	25.0%	4	25.0%
MEDAILLE INVITE	525	5	17.17	74.0%	8.53	56.4%	59	159	37.1%	182	530	34.3%	210	348	60.3%	204	303	67.3%	86	117	73.5%	118	186	63.4%	6	45	13.3%	8.5%	53	18.89	86.8%	43.4%	13.2%	53	67.9%	28.3%	53	32.1%
DUALS WEEK ENDING 1119	118	2	15.33	61.7%	8.19	49.2%	12	28	42.9%	31	120	25.8%	43	89	48.3%	41	81	50.6%	18	28	64.3%	23	53	43.4%	2	8	25.0%	6.7%	12	16.92	75.0%	25.0%	8.3%	12	66.7%	8.3%	12	33.3%
DUALS WEEK ENDING 1209	48	2	15.65	66.0%	8.06	44.0%	6	15	40.0%	16	50	32.0%	17	34	50.0%	17	30	56.7%	4	6	66.7%	13	24	54.2%	0	4	0.0%	8.0%	5	15.40	60.0%	20.0%	0.0%	5	60.0%	0.0%	5	40.0%
DUALS FEBRUARY 6	47	3	16.45	66.0%	8.04	46.0%	5	11	45.5%	14	50	28.0%	19	36	52.8%	19	31	61.3%	9	9	100.0%	10	22	45.5%	0	5	0.0%	10.0%	5	20.60	100.0%	60.0%	20.0%	5	80.0%	40.0%	5	40.0%
FEBRUARY 2021 DUALS	65	5	17.54	72.9%	8.76	62.9%	15	27	55.6%	29	70	41.4%	22	41	53.7%	22	34	64.7%	12	15	80.0%	10	19	52.6%	0	7	0.0%	10.0%	7	14.29	57.1%	28.6%	0.0%	7	85.7%	28.6%	7	57.1%
MOLLOY BAKER	497	3	17.49	73.6%	8.57	60.4%	48	148	32.4%	163	500	32.6%	205	337	60.8%	197	289	68.2%	110	139	79.1%	87	150	58.0%	8	48	16.7%	9.6%	50	18.00	78.0%	30.0%	14.0%	50	78.0%	24.0%	50	46.0%
ECC CHAMPIONSHIPS	546	4	17.14	74.7%	8.54	58.4%	64	158	40.5%	173	550	31.5%	238	377	63.1%	230	319	72.1%	117	148	79.1%	113	171	66.1%	8	58	13.8%	10.5%	55	17.85	83.6%	27.3%	9.1%	55	69.1%	29.1%	55	32.7%
<b>TRADITIONAL</b>	793	2	17.05	73.7%	8.48	57.1%	0	0		247	795	31.1%	339	548	61.9%	324	478	67.8%	156	207	75.4%	168	271	62.0%	15	70	21.4%	8.8%	79	17.20	77.2%	27.8%	8.9%	80	73.8%	30.0%	80	35.0%
DUAL AT KENMORE	100	0	15.66	66.0%	8.42	56.0%	0	0		29	100	29.0%	37	71	52.1%	37	64	57.8%	22	27	81.5%	15	37	40.5%	0	7	0.0%	7.0%	10	14.60	60.0%	30.0%	0.0%	10	60.0%	20.0%	10	30.0%
DUALS WEEK ENDING 1119	200	0	16.93	73.5%	8.48	56.5%	0	0		60	200	30.0%	87	140	62.1%	86	128	67.2%	39	53	73.6%	47	75	62.7%	1	12	8.3%	6.0%	20	17.25	80.0%	35.0%	10.0%	20	85.0%	30.0%	20	50.0%
DUALS WEEK ENDING 1209	94	1	17.93	80.0%	8.54	64.2%	0	0		35	95	36.8%	41	60	68.3%	40	56	71.4%	21	26	80.8%	19	30	63.3%	1	4	25.0%	4.2%	9	16.89	77.8%	22.2%	11.1%	10	80.0%	40.0%	10	20.0%
DUALS FEBRUARY 6	100	0	17.03	73.0%	8.53	57.0%	0	0		31	100	31.0%	42	69	60.9%	40	56	71.4%	18	26	69.2%	22	30	73.3%	2	13	15.4%	13.0%	10	15.70	70.0%	10.0%	0.0%	10	60.0%	20.0%	10	30.0%
PAT LACY MEMORIAL	250	0	17.08	73.2%	8.42	55.6%	0	0		75	250	30.0%	108	175	61.7%	99	146	67.8%	46	64	71.9%	53	82	64.6%	9	29	31.0%	11.6%	25	18.12	80.0%	32.0%	12.0%	25	76.0%	40.0%	25	32.0%
FEBRUARY 2021 DUALS	49	1	18.61	82.0%	8.69	56.0%	0	0		17	50	34.0%	24	33	72.7%	22	28	78.6%	10	11	90.9%	12	17	70.6%	2	5	40.0%	10.0%	5	21.20	100.0%	20.0%	20.0%	5	60.0%	0.0%	5	40.0%
<b>Grand Total</b>	2675	30	17.05	72.9%	8.49	57.0%	212	559	37.9%	869	2705	32.1%	1104	1836	60.1%	1064	1583	67.2%	517	674	76.7%	547	909	60.2%	40	253	15.8%	9.4%	270	17.73	80.0%	31.5%	10.4%	271	72.0%	26.9%	271	36.5%

# DAEMEN COLLEGE

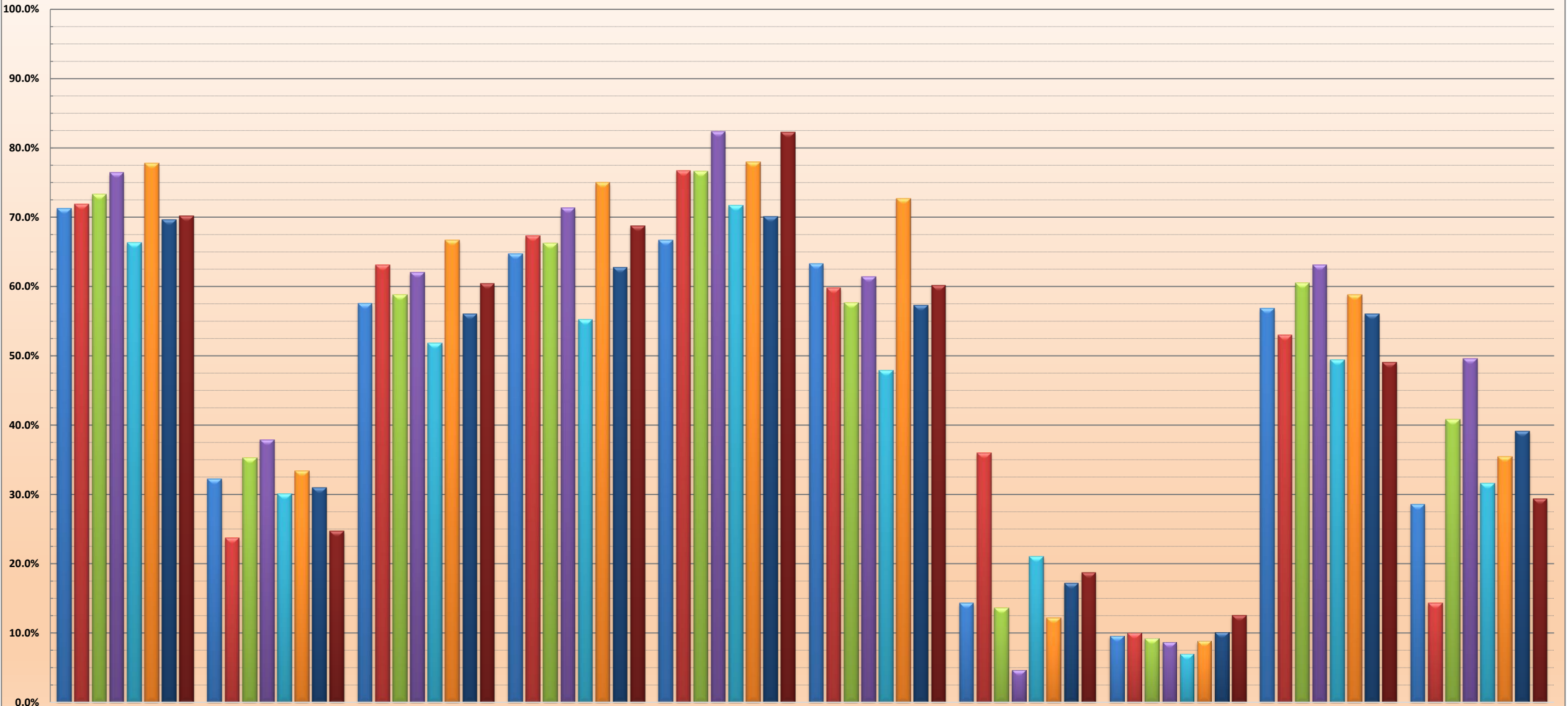
## 2017-18 TEAM STATISTICS BY FORMAT BY PLAYER - SEASON YTD

division (All)

Row Labels	All Bowlers																								ANCHOR BOWLER					LEADOFF BOWLER			4TH BOWLER					
	COMPLETE FRAMES	INCOMPLETE FRAMES	AVG / FRAME	OVER-ALL FILL %	AVG 1ST BALL	1ST BALL "9+ %"	BAKER DBL STRIKES	BAKER DBL ATTPPTS	BAKER DBL %	STRIKES	STRIKE ATTPPTS	STRIKE %	ALL SPARES	ALL SPARE ATTPPTS	ALL SPARE CONV %	MAKE-ABLE SPARES	MAKE-ABLE SPARE ATTPPTS	MAKE-ABLE SPARE %	SINGLE PIN SPARES	SINGLE PIN SPARE ATTPPTS	SINGLE PIN SPARE CONV %	MULTI-PIN MAKE-ABLE SPARES	MULTI-PIN MAKE-ABLE ATTPPTS	MULTI-PIN MAKE-ABLE CONV %	SPLIT-SPARES	SPLIT ATTPPTS	SPLIT CONV %	SPLIT LEAVE %	10TH FRAME ATTPPTS	10TH FRAME AVG	10TH FRAME FILL %	10TH FRAME STRIKE %	10TH FRAME DBL %	LEAD-OFF ATTPPTS	LEAD-OFF %	LEAD-OFF STRIKE %	SETUP ATTPPTS	SETUP %
<b>BAKER</b>	<b>1882</b>	<b>28</b>	<b>17.05</b>	<b>72.6%</b>	<b>8.50</b>	<b>57.0%</b>	<b>212</b>	<b>559</b>	<b>37.9%</b>	<b>622</b>	<b>1910</b>	<b>32.6%</b>	<b>765</b>	<b>1288</b>	<b>59.4%</b>	<b>740</b>	<b>1105</b>	<b>67.0%</b>	<b>361</b>	<b>467</b>	<b>77.3%</b>	<b>379</b>	<b>638</b>	<b>59.4%</b>	<b>25</b>	<b>183</b>	<b>13.7%</b>	<b>9.6%</b>	<b>191</b>	<b>17.95</b>	<b>81.2%</b>	<b>33.0%</b>	<b>11.0%</b>	<b>191</b>	<b>71.2%</b>	<b>25.7%</b>	<b>191</b>	<b>37.2%</b>
Alexandra Syrotynski	134	3	16.91	71.5%	8.47	54.0%	10	35	28.6%	43	137	31.4%	55	94	58.5%	53	80	66.3%	22	31	71.0%	31	49	63.3%	2	14	14.3%	10.2%	0					19	78.9%	36.8%	2	50.0%
Alexandra Hasiotis	124	3	15.46	66.9%	8.18	48.8%	3	21	14.3%	29	127	22.8%	56	98	57.1%	52	84	61.9%	24	33	72.7%	28	51	54.9%	4	14	28.6%	11.0%	4	15.75	75.0%	25.0%	0.0%	50	70.0%	22.0%	0	
Kaitlyn Good	326	2	17.42	72.9%	8.62	61.6%	38	93	40.9%	121	328	36.9%	118	207	57.0%	114	174	65.5%	64	81	79.0%	50	93	53.8%	4	33	12.1%	10.1%	0					4	50.0%	0.0%	36	33.3%
Katlyn Newberry	364	4	17.87	76.1%	8.68	63.6%	61	123	49.6%	142	368	38.6%	138	226	61.1%	136	191	71.2%	75	92	81.5%	61	99	61.6%	2	35	5.7%	9.5%	54	17.50	79.6%	35.2%	9.3%	0			110	38.2%
Madison Rogacki	174	5	15.97	67.0%	8.26	47.5%	18	57	31.6%	55	179	30.7%	65	124	52.4%	61	112	54.5%	18	30	60.0%	43	82	52.4%	4	12	33.3%	6.7%	0					4	50.0%	25.0%	18	27.8%
Rachel Steele	329	5	17.68	77.2%	8.55	58.7%	45	127	35.4%	107	334	32.0%	151	227	66.5%	149	201	74.1%	74	89	83.1%	75	112	67.0%	2	26	7.7%	7.8%	130	18.25	82.3%	32.3%	12.3%	10	60.0%	20.0%	14	42.9%
Adrianna Pencek	246	3	16.47	69.1%	8.43	56.6%	27	69	39.1%	76	249	30.5%	96	173	55.5%	93	148	62.8%	44	65	67.7%	49	83	59.0%	3	25	12.0%	10.0%	3	16.00	66.7%	33.3%	0.0%	12	66.7%	25.0%	11	45.5%
Kaitlyn O'Hara	185	3	16.68	71.8%	8.37	50.5%	10	34	29.4%	49	188	26.1%	86	139	61.9%	82	115	71.3%	40	46	87.0%	42	69	60.9%	4	24	16.7%	12.8%	0					92	73.9%	27.2%	0	
<b>TRADITIONAL</b>	<b>793</b>	<b>2</b>	<b>17.05</b>	<b>73.7%</b>	<b>8.48</b>	<b>57.1%</b>	<b>0</b>	<b>0</b>		<b>247</b>	<b>795</b>	<b>31.1%</b>	<b>339</b>	<b>548</b>	<b>61.9%</b>	<b>324</b>	<b>478</b>	<b>67.8%</b>	<b>156</b>	<b>207</b>	<b>75.4%</b>	<b>168</b>	<b>271</b>	<b>62.0%</b>	<b>15</b>	<b>70</b>	<b>21.4%</b>	<b>8.8%</b>	<b>79</b>	<b>17.20</b>	<b>77.2%</b>	<b>27.8%</b>	<b>8.9%</b>	<b>80</b>	<b>73.8%</b>	<b>30.0%</b>	<b>80</b>	<b>35.0%</b>
Alexandra Syrotynski	9	0	16.89	66.7%	9.44	100.0%	0	0		4	9	44.4%	2	5	40.0%	2	5	40.0%	2	5	40.0%	0	0		0	0	0.0%	0.0%	2	14.00	50.0%	0.0%	0.0%	0			1	0.0%
Alexandra Hasiotis	122	0	17.19	77.0%	8.40	57.4%	0	0		30	122	24.6%	64	92	69.6%	59	81	72.8%	32	40	80.0%	27	41	65.9%	5	11	45.5%	9.0%	12	17.50	83.3%	25.0%	8.3%	12	83.3%	33.3%	12	25.0%
Kaitlyn Good	147	1	17.13	74.3%	8.54	58.1%	0	0		47	148	31.8%	63	101	62.4%	61	90	67.8%	28	39	71.8%	33	51	64.7%	2	11	18.2%	7.4%	14	18.43	78.6%	50.0%	21.4%	15	66.7%	20.0%	15	26.7%
Katlyn Newberry	127	1	17.55	77.3%	8.56	61.7%	0	0		46	128	35.9%	53	82	64.6%	53	74	71.6%	28	33	84.8%	25	41	61.0%	0	8	0.0%	6.3%	12	18.83	91.7%	25.0%	16.7%	14	78.6%	50.0%	13	46.2%
Madison Rogacki	94	0	15.76	64.9%	8.26	53.2%	0	0		27	94	28.7%	34	67	50.7%	34	60	56.7%	20	23	87.0%	14	37	37.8%	0	7	0.0%	7.4%	9	16.22	77.8%	0.0%	0.0%	10	90.0%	30.0%	10	50.0%
Rachel Steele	130	0	18.13	79.2%	8.62	59.2%	0	0		48	130	36.9%	55	82	67.1%	52	67	77.6%	18	29	62.1%	34	38	89.5%	3	15	20.0%	11.5%	13	16.69	69.2%	30.8%	7.7%	13	76.9%	30.8%	13	46.2%
Adrianna Pencek	97	0	17.14	71.1%	8.49	54.6%	0	0		31	97	32.0%	38	66	57.6%	35	56	62.5%	17	22	77.3%	18	34	52.9%	3	10	30.0%	10.3%	10	16.10	70.0%	30.0%	0.0%	10	40.0%	20.0%	9	22.2%
Kaitlyn O'Hara	67	0	15.28	65.7%	8.25	44.8%	0	0		14	67	20.9%	30	53	56.6%	28	45	62.2%	11	16	68.8%	17	29	58.6%	2	8	25.0%	11.9%	7	16.14	71.4%	28.6%	0.0%	6	83.3%	16.7%	7	28.6%
<b>Grand Total</b>	<b>2675</b>	<b>30</b>	<b>17.05</b>	<b>72.9%</b>	<b>8.49</b>	<b>57.0%</b>	<b>212</b>	<b>559</b>	<b>37.9%</b>	<b>869</b>	<b>2705</b>	<b>32.1%</b>	<b>1104</b>	<b>1836</b>	<b>60.1%</b>	<b>1064</b>	<b>1583</b>	<b>67.2%</b>	<b>517</b>	<b>674</b>	<b>76.7%</b>	<b>547</b>	<b>909</b>	<b>60.2%</b>	<b>40</b>	<b>253</b>	<b>15.8%</b>	<b>9.4%</b>	<b>270</b>	<b>17.73</b>	<b>80.0%</b>	<b>31.5%</b>	<b>10.4%</b>	<b>271</b>	<b>72.0%</b>	<b>26.9%</b>	<b>271</b>	<b>36.5%</b>

division Event FORMAT

**DAEMEN COLLEGE  
PERFORMANCE PERCENTAGES - SELECT STATISTICAL CATEGORIES - ALL FORMATS  
2017-2018 SEASON YTD**



Values

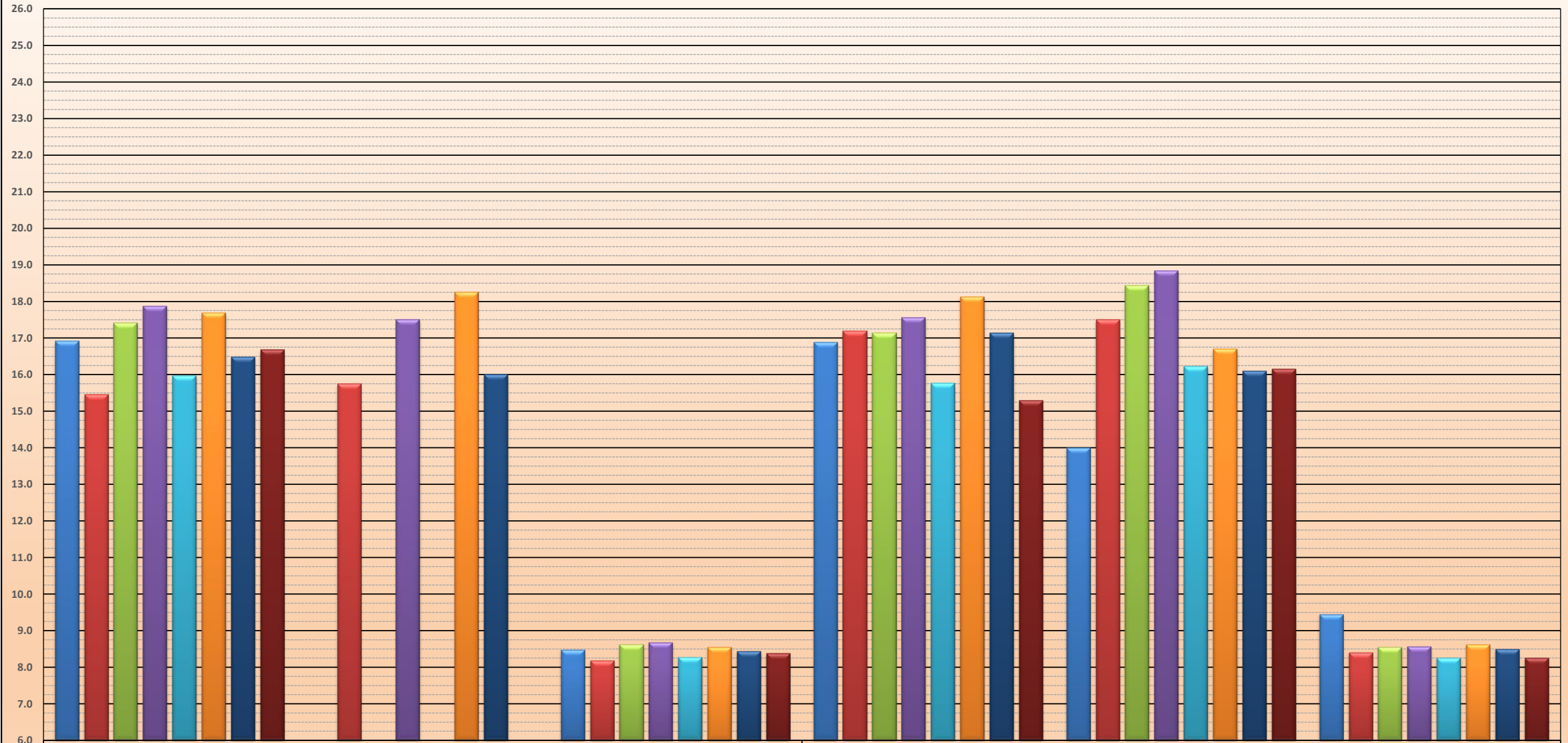
Bowler

- Alexandra Syrotynski
- Alexandra Hasiotis
- Kaitlyn Good
- Katlyn Newberry
- Madison Rogacki
- Rachel Steele
- Adrianna Pencek
- Kaitlyn O'Hara

division Event

AVG / FRAME 10TH FRAME AVG AVG 1ST BALL

DAEMEN COLLEGE  
PERFORMANCE AVERAGES - SELECT CATEGORIES BY FORMAT BY BOWLERS  
2017-18 SEASON YTD



Bowler

- Alexandra Syrotynski
- Alexandra Hasiotis
- Kaitlyn Good
- Katlyn Newberry
- Madison Rogacki
- Rachel Steele
- Adrianna Pencek
- Kaitlyn O'Hara

FORMAT Values

# DAEMEN COLLEGE

## 2017-18 TEAM STATISTICS BY EVENT BY FORMAT BY PLAYER

division (All)

Row Labels	All Bowlers																								ANCHOR BOWLER					LEADOFF BOWLER			4TH BOWLER					
	COMPLET E FRAMES	INCOMPL ETE FRAMES	AVG / FRAME	OVER- ALL FILL %	AVG 1ST BALL	1ST BALL "9+ %"	BAKER DBL STRIKES	BAKER DBL ATTPTS	BAKER DBL %	STRIKES	STRIKE ATTPTS	STRIKE %	ALL SPARES	ALL SPARE ATTPTS	ALL SPARE CONV %	MAKE- ABLE SPARES	MAKE- ABLE SPARE ATTPTS	MAKE- ABLE SPARE %	SINGLE PIN SPARES	SINGLE PIN SPARE ATTPTS	SINGLE PIN SPARE CONV %	MULTI- PIN MAKE- ABLE SPARES	MULTI- PIN MAKE- ABLE ATTPTS	MULTI- PIN MAKE- ABLE CONV %	SPLIT- SPARES	SPLIT ATTPTS	SPLIT CONV %	SPLIT LEAVE %	10TH FRAME ATTPTS	10TH FRAME AVG	10TH FRAME FILL %	10TH FRAME STRIKE %	10TH FRAME DBL %	LEAD- OFF ATTPTS	LEAD- OFF FILL %	LEAD- OFF STRIKE %	SETUP ATTPTS	SETUP %
<b>DUAL AT KENMORE</b>	<b>136</b>	<b>4</b>	<b>15.61</b>	<b>65.0%</b>	<b>8.35</b>	<b>53.6%</b>	<b>3</b>	<b>13</b>	<b>23.1%</b>	<b>43</b>	<b>140</b>	<b>30.7%</b>	<b>48</b>	<b>97</b>	<b>49.5%</b>	<b>47</b>	<b>82</b>	<b>57.3%</b>	<b>27</b>	<b>32</b>	<b>84.4%</b>	<b>20</b>	<b>50</b>	<b>40.0%</b>	<b>1</b>	<b>15</b>	<b>6.7%</b>	<b>10.7%</b>	<b>14</b>	<b>14.93</b>	<b>64.3%</b>	<b>28.6%</b>	<b>0.0%</b>	<b>14</b>	<b>57.1%</b>	<b>21.4%</b>	<b>14</b>	<b>28.6%</b>
<b>BAKER</b>	<b>36</b>	<b>4</b>	<b>15.47</b>	<b>62.5%</b>	<b>8.15</b>	<b>47.5%</b>	<b>3</b>	<b>13</b>	<b>23.1%</b>	<b>14</b>	<b>40</b>	<b>35.0%</b>	<b>11</b>	<b>26</b>	<b>42.3%</b>	<b>10</b>	<b>18</b>	<b>55.6%</b>	<b>5</b>	<b>5</b>	<b>100.0%</b>	<b>5</b>	<b>13</b>	<b>38.5%</b>	<b>1</b>	<b>8</b>	<b>12.5%</b>	<b>20.0%</b>	<b>4</b>	<b>15.75</b>	<b>75.0%</b>	<b>25.0%</b>	<b>0.0%</b>	<b>4</b>	<b>50.0%</b>	<b>25.0%</b>	<b>4</b>	<b>25.0%</b>
Alexandra Syrotynski	6	0	9.33	16.7%	6.33	16.7%	0	4	0.0%	0	6	0.0%	1	6	16.7%	1	3	33.3%	1	1	100.0%	0	2	0.0%	0	3	0.0%	50.0%	0					0			0	
Alexandra Hasiotis	8	0	16.63	75.0%	8.88	62.5%	0	2	0.0%	3	8	37.5%	3	5	60.0%	2	2	100.0%	2	2	100.0%	0	0		1	3	33.3%	37.5%	4	15.75	75.0%	25.0%	0.0%	0			0	
Kaitlyn Good	7	1	23.57	100.0%	9.25	87.5%	1	3	33.3%	5	8	62.5%	3	3	100.0%	3	3	100.0%	2	2	100.0%	1	1	100.0%	0	0		0.0%	0					0			0	
Katlyn Newberry	7	1	13.14	50.0%	8.00	25.0%	0	1	0.0%	2	8	25.0%	2	6	33.3%	2	4	50.0%	0	0		2	4	50.0%	0	2	0.0%	25.0%	0					0			4	25.0%
Madison Rogacki	7	1	14.57	62.5%	7.88	37.5%	2	2	100.0%	3	8	37.5%	2	5	40.0%	2	5	40.0%	0	0		2	5	40.0%	0	0		0.0%	0					4	50.0%	25.0%	0	
Rachel Steele	1	1	9.00	50.0%	8.50	50.0%	0	1	0.0%	1	2	50.0%	0	1	0.0%	0	1	0.0%	0	0		0	1	0.0%	0	0		0.0%	0					0			0	
<b>TRADITIONAL</b>	<b>100</b>	<b>0</b>	<b>15.66</b>	<b>66.0%</b>	<b>8.42</b>	<b>56.0%</b>	<b>0</b>	<b>0</b>		<b>29</b>	<b>100</b>	<b>29.0%</b>	<b>37</b>	<b>71</b>	<b>52.1%</b>	<b>37</b>	<b>64</b>	<b>57.8%</b>	<b>22</b>	<b>27</b>	<b>81.5%</b>	<b>15</b>	<b>37</b>	<b>40.5%</b>	<b>0</b>	<b>7</b>	<b>0.0%</b>	<b>7.0%</b>	<b>10</b>	<b>14.60</b>	<b>60.0%</b>	<b>30.0%</b>	<b>0.0%</b>	<b>10</b>	<b>60.0%</b>	<b>20.0%</b>	<b>10</b>	<b>30.0%</b>
Alexandra Hasiotis	20	0	16.35	75.0%	8.40	65.0%	0	0		4	20	20.0%	11	16	68.8%	11	15	73.3%	8	9	88.9%	3	6	50.0%	0	1	0.0%	5.0%	2	11.50	50.0%	0.0%	0.0%	2	50.0%	0.0%	2	50.0%
Kaitlyn Good	20	0	17.50	80.0%	8.65	55.0%	0	0		6	20	30.0%	10	14	71.4%	10	14	71.4%	4	5	80.0%	6	9	66.7%	0	0		0.0%	2	14.00	50.0%	50.0%	0.0%	2	50.0%	0.0%	2	0.0%
Katlyn Newberry	10	0	13.60	50.0%	8.70	60.0%	0	0		4	10	40.0%	1	6	16.7%	1	5	20.0%	1	2	50.0%	0	3	0.0%	0	1	0.0%	10.0%	1	9.00	0.0%	0.0%	0.0%	1	0.0%	0.0%	1	100.0%
Madison Rogacki	20	0	16.70	70.0%	8.45	55.0%	0	0		7	20	35.0%	7	13	53.8%	7	11	63.6%	4	4	100.0%	3	7	42.9%	0	2	0.0%	10.0%	2	19.50	100.0%	0.0%	0.0%	2	100.0%	50.0%	2	50.0%
Rachel Steele	10	0	13.60	50.0%	8.40	50.0%	0	0		3	10	30.0%	2	7	28.6%	2	6	33.3%	1	2	50.0%	1	4	25.0%	0	1	0.0%	10.0%	1	8.00	0.0%	0.0%	0.0%	1	100.0%	100.0%	1	0.0%
Adrianna Pencek	10	0	13.60	50.0%	7.90	50.0%	0	0		3	10	30.0%	2	7	28.6%	2	6	33.3%	2	2	100.0%	0	4	0.0%	0	1	0.0%	10.0%	1	19.00	100.0%	100.0%	0.0%	1	0.0%	0.0%	1	0.0%
Kaitlyn O'Hara	10	0	14.70	60.0%	8.20	50.0%	0	0		2	10	20.0%	4	8	50.0%	4	7	57.1%	2	3	66.7%	2	4	50.0%	0	1	0.0%	10.0%	1	20.00	100.0%	100.0%	0.0%	1	100.0%	0.0%	1	0.0%

# DAEMEN COLLEGE

## 2017-18 TEAM STATISTICS BY EVENT BY FORMAT BY PLAYER

division	(All)																																					
Row Labels	All Bowlers																								ANCHOR BOWLER					LEADOFF BOWLER			4TH BOWLER					
	COMPLETE FRAMES	INCOMPLETE FRAMES	AVG / FRAME	OVER-ALL FILL %	AVG 1ST BALL	1ST BALL "9+ %"	BAKER DBL STRIKES	BAKER DBL ATTPTS	BAKER DBL %	STRIKES	STRIKE ATTPTS	STRIKE %	ALL SPARES	ALL SPARE ATTPTS	ALL SPARE CONV %	MAKE-ABLE SPARES	MAKE-ABLE SPARE ATTPTS	MAKE-ABLE SPARE %	SINGLE PIN SPARES	SINGLE PIN SPARE ATTPTS	SINGLE PIN SPARE CONV %	MULTI-PIN MAKE-ABLE SPARES	MULTI-PIN MAKE-ABLE ATTPTS	MULTI-PIN MAKE-ABLE CONV %	SPLIT-SPARES	SPLIT ATTPTS	SPLIT CONV %	SPLIT LEAVE %	10TH FRAME ATTPTS	10TH FRAME AVG	10TH FRAME FILL %	10TH FRAME STRIKE %	10TH FRAME DBL %	LEAD-OFF ATTPTS	LEAD-OFF FILL %	LEAD-OFF STRIKE %	SETUP ATTPTS	SETUP %
MEDAILLE INVITE	525	5	17.17	74.0%	8.53	56.4%	59	159	37.1%	182	530	34.3%	210	348	60.3%	204	303	67.3%	86	117	73.5%	118	186	63.4%	6	45	13.3%	8.5%	53	18.89	86.8%	43.4%	13.2%	53	67.9%	28.3%	53	32.1%
BAKER	525	5	17.17	74.0%	8.53	56.4%	59	159	37.1%	182	530	34.3%	210	348	60.3%	204	303	67.3%	86	117	73.5%	118	186	63.4%	6	45	13.3%	8.5%	53	18.89	86.8%	43.4%	13.2%	53	67.9%	28.3%	53	32.1%
Alexandra Syrotynski	82	1	18.07	77.1%	8.69	59.0%	6	20	30.0%	29	83	34.9%	35	54	64.8%	33	46	71.7%	13	20	65.0%	20	26	76.9%	2	8	25.0%	9.6%	0					18	77.8%	33.3%	2	50.0%
Alexandra Hasiotis	35	1	15.51	66.7%	8.25	58.3%	0	9	0.0%	9	36	25.0%	15	27	55.6%	14	25	56.0%	9	12	75.0%	5	13	38.5%	1	2	50.0%	5.6%	0					18	66.7%	27.8%	0	
Kaitlyn Good	106	0	16.46	71.7%	8.64	59.4%	9	27	33.3%	35	106	33.0%	41	71	57.7%	39	59	66.1%	21	28	75.0%	18	31	58.1%	2	12	16.7%	11.3%	0					0			28	32.1%
Katlyn Newberry	106	0	18.13	78.3%	8.80	65.1%	21	33	63.6%	47	106	44.3%	36	59	61.0%	36	49	73.5%	18	22	81.8%	18	27	66.7%	0	10	0.0%	9.4%	33	17.97	81.8%	42.4%	9.1%	0			0	
Madison Rogacki	92	0	16.63	69.6%	8.23	47.8%	11	34	32.4%	30	92	32.6%	34	62	54.8%	34	59	57.6%	8	14	57.1%	26	45	57.8%	0	3	0.0%	3.3%	0					0			18	27.8%
Rachel Steele	77	2	17.51	77.2%	8.37	50.6%	10	29	34.5%	24	79	30.4%	37	55	67.3%	36	47	76.6%	12	16	75.0%	24	31	77.4%	1	8	12.5%	10.1%	20	20.40	95.0%	45.0%	20.0%	10	60.0%	20.0%	5	40.0%
Adrianna Pencek	23	1	17.04	75.0%	8.42	50.0%	2	7	28.6%	8	24	33.3%	10	16	62.5%	10	14	71.4%	4	4	100.0%	6	10	60.0%	0	2	0.0%	8.3%	0					5	60.0%	40.0%	0	
Kaitlyn O'Hara	4	0	13.25	50.0%	8.00	25.0%	0	0		0	4	0.0%	2	4	50.0%	2	4	50.0%	1	1	100.0%	1	3	33.3%	0	0		0.0%	0					2	50.0%	0.0%	0	

# DAEMEN COLLEGE

## 2017-18 TEAM STATISTICS BY EVENT BY FORMAT BY PLAYER

division	(All)																																					
Row Labels	All Bowlers																								ANCHOR BOWLER					LEADOFF BOWLER			4TH BOWLER					
	COMPLET E FRAMES	INCOMPL ETE FRAMES	AVG / FRAME	OVER-ALL FILL %	AVG 1ST BALL	1ST BALL "9+ %"	BAKER DBL STRIKES	BAKER DBL ATTPTS	BAKER DBL %	STRIKES	STRIKE ATTPTS	STRIKE %	ALL SPARES	ALL SPARE ATTPTS	ALL SPARE CONV %	MAKE-ABLE SPARES	MAKE-ABLE SPARE ATTPTS	MAKE-ABLE SPARE %	SINGLE PIN SPARES	SINGLE PIN SPARE ATTPTS	SINGLE PIN SPARE CONV %	MULTI-PIN MAKE-ABLE SPARES	MULTI-PIN MAKE-ABLE ATTPTS	MULTI-PIN MAKE-ABLE CONV %	SPLIT-SPARES	SPLIT ATTPTS	SPLIT CONV %	SPLIT LEAVE %	10TH FRAME ATTPTS	10TH FRAME AVG	10TH FRAME FILL %	10TH FRAME STRIKE %	10TH FRAME DBL %	LEAD-OFF ATTPTS	LEAD-OFF FILL %	LEAD-OFF STRIKE %	SETUP ATTPTS	SETUP %
<b>DUALS WEEK ENDING 1119</b>	<b>318</b>	<b>2</b>	<b>16.33</b>	<b>69.1%</b>	<b>8.37</b>	<b>53.8%</b>	<b>12</b>	<b>28</b>	<b>42.9%</b>	<b>91</b>	<b>320</b>	<b>28.4%</b>	<b>130</b>	<b>229</b>	<b>56.8%</b>	<b>127</b>	<b>209</b>	<b>60.8%</b>	<b>57</b>	<b>81</b>	<b>70.4%</b>	<b>70</b>	<b>128</b>	<b>54.7%</b>	<b>3</b>	<b>20</b>	<b>15.0%</b>	<b>6.3%</b>	<b>32</b>	<b>17.13</b>	<b>78.1%</b>	<b>31.3%</b>	<b>9.4%</b>	<b>32</b>	<b>78.1%</b>	<b>21.9%</b>	<b>32</b>	<b>43.8%</b>
<b>BAKER</b>	<b>118</b>	<b>2</b>	<b>15.33</b>	<b>61.7%</b>	<b>8.19</b>	<b>49.2%</b>	<b>12</b>	<b>28</b>	<b>42.9%</b>	<b>31</b>	<b>120</b>	<b>25.8%</b>	<b>43</b>	<b>89</b>	<b>48.3%</b>	<b>41</b>	<b>81</b>	<b>50.6%</b>	<b>18</b>	<b>28</b>	<b>64.3%</b>	<b>23</b>	<b>53</b>	<b>43.4%</b>	<b>2</b>	<b>8</b>	<b>25.0%</b>	<b>6.7%</b>	<b>12</b>	<b>16.92</b>	<b>75.0%</b>	<b>25.0%</b>	<b>8.3%</b>	<b>12</b>	<b>66.7%</b>	<b>8.3%</b>	<b>12</b>	<b>33.3%</b>
Alexandra Hasiotis	13	0	15.08	69.2%	7.54	30.8%	1	2	50.0%	2	13	15.4%	7	11	63.6%	7	10	70.0%	2	2	100.0%	5	8	62.5%	0	1	0.0%	7.7%	0					5	60.0%	0.0%	0	
Kaitlyn Good	21	0	15.52	57.1%	8.00	47.6%	3	8	37.5%	5	21	23.8%	7	16	43.8%	7	13	53.8%	4	5	80.0%	3	8	37.5%	0	3	0.0%	14.3%	0					0			8	37.5%
Katlyn Newberry	24	0	14.13	50.0%	8.29	50.0%	2	7	28.6%	6	24	25.0%	6	18	33.3%	6	18	33.3%	3	6	50.0%	3	12	25.0%	0	0		0.0%	12	16.92	75.0%	25.0%	8.3%	0				0
Madison Rogacki	21	0	14.86	61.9%	8.19	47.6%	2	5	40.0%	5	21	23.8%	8	16	50.0%	6	13	46.2%	3	5	60.0%	3	8	37.5%	2	3	66.7%	14.3%	0					0				0
Rachel Steele	13	1	17.46	78.6%	8.79	64.3%	1	3	33.3%	5	14	35.7%	6	9	66.7%	6	9	66.7%	3	4	75.0%	3	5	60.0%	0	0		0.0%	0					0				0
Adrianna Pencek	22	1	16.64	69.6%	8.48	56.5%	3	3	100.0%	8	23	34.8%	8	15	53.3%	8	14	57.1%	2	5	40.0%	6	9	66.7%	0	1	0.0%	4.3%	0					7	71.4%	14.3%	4	25.0%
Kaitlyn O'Hara	4	0	10.75	25.0%	7.25	25.0%	0	0		0	4	0.0%	1	4	25.0%	1	4	25.0%	1	1	100.0%	0	3	0.0%	0	0		0.0%	0					0				0
<b>TRADITIONAL</b>	<b>200</b>	<b>0</b>	<b>16.93</b>	<b>73.5%</b>	<b>8.48</b>	<b>56.5%</b>	<b>0</b>	<b>0</b>		<b>60</b>	<b>200</b>	<b>30.0%</b>	<b>87</b>	<b>140</b>	<b>62.1%</b>	<b>86</b>	<b>128</b>	<b>67.2%</b>	<b>39</b>	<b>53</b>	<b>73.6%</b>	<b>47</b>	<b>75</b>	<b>62.7%</b>	<b>1</b>	<b>12</b>	<b>8.3%</b>	<b>6.0%</b>	<b>20</b>	<b>17.25</b>	<b>80.0%</b>	<b>35.0%</b>	<b>10.0%</b>	<b>20</b>	<b>85.0%</b>	<b>30.0%</b>	<b>20</b>	<b>50.0%</b>
Alexandra Hasiotis	40	0	16.45	72.5%	8.28	52.5%	0	0		8	40	20.0%	21	32	65.6%	20	29	69.0%	8	13	61.5%	12	16	75.0%	1	3	33.3%	7.5%	4	18.00	100.0%	25.0%	0.0%	4	75.0%	0.0%	4	25.0%
Kaitlyn Good	40	0	16.95	72.5%	8.68	60.0%	0	0		13	40	32.5%	16	27	59.3%	16	25	64.0%	7	11	63.6%	9	14	64.3%	0	2	0.0%	5.0%	4	21.00	100.0%	75.0%	25.0%	4	75.0%	25.0%	4	75.0%
Katlyn Newberry	40	0	19.10	87.5%	8.78	65.0%	0	0		15	40	37.5%	20	25	80.0%	20	23	87.0%	11	11	100.0%	9	12	75.0%	0	2	0.0%	5.0%	4	20.50	100.0%	50.0%	25.0%	4	100.0%	50.0%	4	25.0%
Madison Rogacki	36	0	16.81	69.4%	8.42	58.3%	0	0		13	36	36.1%	12	23	52.2%	12	21	57.1%	7	8	87.5%	5	13	38.5%	0	2	0.0%	5.6%	3	14.00	66.7%	0.0%	0.0%	4	100.0%	25.0%	4	50.0%
Rachel Steele	20	0	17.60	85.0%	8.40	55.0%	0	0		6	20	30.0%	11	14	78.6%	11	13	84.6%	3	5	60.0%	8	8	100.0%	0	1	0.0%	5.0%	2	19.00	100.0%	50.0%	0.0%	2	100.0%	50.0%	2	100.0%
Adrianna Pencek	4	0	13.75	50.0%	8.50	50.0%	0	0		0	4	0.0%	2	4	50.0%	2	4	50.0%	1	2	50.0%	1	2	50.0%	0	0		0.0%	1	9.00	0.0%	0.0%	0.0%	0				0
Kaitlyn O'Hara	20	0	13.65	50.0%	8.10	40.0%	0	0		5	20	25.0%	5	15	33.3%	5	13	38.5%	2	3	66.7%	3	10	30.0%	0	2	0.0%	10.0%	2	9.00	0.0%	0.0%	0.0%	2	50.0%	50.0%	2	50.0%

# DAEMEN COLLEGE

## 2017-18 TEAM STATISTICS BY EVENT BY FORMAT BY PLAYER

division	(All)																																					
Row Labels	All Bowlers																									ANCHOR BOWLER					LEADOFF BOWLER			4TH BOWLER				
	COMPLET E FRAMES	INCOMPL ETE FRAMES	AVG / FRAME	OVER- ALL FILL %	AVG 1ST BALL	1ST BALL "9+ %"	BAKER DBL STRIKES	BAKER DBL ATTPTS	BAKER DBL %	STRIKES	STRIKE ATTPTS	STRIKE %	ALL SPARES	ALL SPARE ATTPTS	ALL SPARE CONV %	MAKE- ABLE SPARES	MAKE- ABLE SPARE ATTPTS	MAKE- ABLE SPARE %	SINGLE PIN SPARES	SINGLE PIN SPARE ATTPTS	SINGLE PIN SPARE CONV %	MULTI- PIN MAKE- ABLE SPARES	MULTI- PIN MAKE- ABLE ATTPTS	MULTI- PIN MAKE- ABLE CONV %	SPLIT- SPARES	SPLIT ATTPTS	SPLIT CONV %	SPLIT LEAVE %	10TH FRAME ATTPTS	10TH FRAME AVG	10TH FRAME FILL %	10TH FRAME STRIKE %	10TH FRAME DBL %	LEAD- OFF ATTPTS	LEAD- OFF FILL %	LEAD- OFF STRIKE %	SETUP ATTPTS	SETUP %
<b>DUALS WEEK ENDING 1209</b>	<b>142</b>	<b>3</b>	<b>17.15</b>	<b>75.2%</b>	<b>8.38</b>	<b>57.2%</b>	<b>6</b>	<b>15</b>	<b>40.0%</b>	<b>51</b>	<b>145</b>	<b>35.2%</b>	<b>58</b>	<b>94</b>	<b>61.7%</b>	<b>57</b>	<b>86</b>	<b>66.3%</b>	<b>25</b>	<b>32</b>	<b>78.1%</b>	<b>32</b>	<b>54</b>	<b>59.3%</b>	<b>1</b>	<b>8</b>	<b>12.5%</b>	<b>5.5%</b>	<b>14</b>	<b>16.36</b>	<b>71.4%</b>	<b>21.4%</b>	<b>7.1%</b>	<b>15</b>	<b>73.3%</b>	<b>26.7%</b>	<b>15</b>	<b>26.7%</b>
<b>BAKER</b>	<b>48</b>	<b>2</b>	<b>15.65</b>	<b>66.0%</b>	<b>8.06</b>	<b>44.0%</b>	<b>6</b>	<b>15</b>	<b>40.0%</b>	<b>16</b>	<b>50</b>	<b>32.0%</b>	<b>17</b>	<b>34</b>	<b>50.0%</b>	<b>17</b>	<b>30</b>	<b>56.7%</b>	<b>4</b>	<b>6</b>	<b>66.7%</b>	<b>13</b>	<b>24</b>	<b>54.2%</b>	<b>0</b>	<b>4</b>	<b>0.0%</b>	<b>8.0%</b>	<b>5</b>	<b>15.40</b>	<b>60.0%</b>	<b>20.0%</b>	<b>0.0%</b>	<b>5</b>	<b>60.0%</b>	<b>0.0%</b>	<b>5</b>	<b>40.0%</b>
Alexandra Syrotynski	10	0	16.20	70.0%	8.40	50.0%	2	4	50.0%	4	10	40.0%	3	6	50.0%	3	5	60.0%	0	1	0.0%	3	4	75.0%	0	1	0.0%	10.0%	0					0			0	
Alexandra Hasiotis	9	1	15.33	70.0%	7.80	30.0%	1	2	50.0%	2	10	20.0%	5	8	62.5%	5	8	62.5%	0	1	0.0%	5	7	71.4%	0	0		0.0%	0					5	60.0%	0.0%	0	
Katlyn Newberry	10	0	15.30	60.0%	7.90	50.0%	0	3	0.0%	3	10	30.0%	3	7	42.9%	3	5	60.0%	2	2	100.0%	1	3	33.3%	0	2	0.0%	20.0%	5	15.40	60.0%	20.0%	0.0%	0			0	
Madison Rogacki	10	0	14.60	50.0%	8.10	40.0%	1	2	50.0%	4	10	40.0%	1	6	16.7%	1	5	20.0%	0	0		1	5	20.0%	0	1	0.0%	10.0%	0					0			0	
Rachel Steele	9	1	16.89	80.0%	8.10	50.0%	2	4	50.0%	3	10	30.0%	5	7	71.4%	5	7	71.4%	2	2	100.0%	3	5	60.0%	0	0		0.0%	0					0			5	40.0%
<b>TRADITIONAL</b>	<b>94</b>	<b>1</b>	<b>17.93</b>	<b>80.0%</b>	<b>8.54</b>	<b>64.2%</b>	<b>0</b>	<b>0</b>		<b>35</b>	<b>95</b>	<b>36.8%</b>	<b>41</b>	<b>60</b>	<b>68.3%</b>	<b>40</b>	<b>56</b>	<b>71.4%</b>	<b>21</b>	<b>26</b>	<b>80.8%</b>	<b>19</b>	<b>30</b>	<b>63.3%</b>	<b>1</b>	<b>4</b>	<b>25.0%</b>	<b>4.2%</b>	<b>9</b>	<b>16.89</b>	<b>77.8%</b>	<b>22.2%</b>	<b>11.1%</b>	<b>10</b>	<b>80.0%</b>	<b>40.0%</b>	<b>10</b>	<b>20.0%</b>
Alexandra Syrotynski	9	0	16.89	66.7%	9.44	100.0%	0	0		4	9	44.4%	2	5	40.0%	2	5	40.0%	2	5	40.0%	0	0		0	0		0.0%	2	14.00	50.0%	0.0%	0.0%	0			1	0.0%
Alexandra Hasiotis	20	0	19.25	95.0%	8.45	65.0%	0	0		5	20	25.0%	14	15	93.3%	13	14	92.9%	8	8	100.0%	5	6	83.3%	1	1	100.0%	5.0%	2	18.00	100.0%	0.0%	0.0%	2	100.0%	50.0%	2	0.0%
Kaitlyn Good	7	1	12.86	50.0%	7.88	25.0%	0	0		2	8	25.0%	2	6	33.3%	2	6	33.3%	0	0		2	6	33.3%	0	0		0.0%	0					1	100.0%	0.0%	1	0.0%
Katlyn Newberry	20	0	20.75	90.0%	8.80	65.0%	0	0		11	20	55.0%	7	9	77.8%	7	8	87.5%	2	2	100.0%	5	6	83.3%	0	1	0.0%	5.0%	2	21.50	100.0%	50.0%	50.0%	2	100.0%	100.0%	2	50.0%
Madison Rogacki	15	0	15.87	73.3%	8.13	60.0%	0	0		5	15	33.3%	6	10	60.0%	6	10	60.0%	4	4	100.0%	2	6	33.3%	0	0		0.0%	1	18.00	100.0%	0.0%	0.0%	2	50.0%	0.0%	2	50.0%
Rachel Steele	20	0	18.90	90.0%	8.70	70.0%	0	0		8	20	40.0%	10	12	83.3%	10	11	90.9%	5	6	83.3%	5	5	100.0%	0	1	0.0%	5.0%	2	13.50	50.0%	50.0%	0.0%	2	100.0%	50.0%	2	0.0%
Adrianna Pencek	3	0	9.00	0.0%	7.33	33.3%	0	0		0	3	0.0%	0	3	0.0%	0	2	0.0%	0	1	0.0%	0	1	0.0%	0	1	0.0%	33.3%	0					1	0.0%	0.0%	0	

# DAEMEN COLLEGE

## 2017-18 TEAM STATISTICS BY EVENT BY FORMAT BY PLAYER

division	(All)																																					
Row Labels	All Bowlers																								ANCHOR BOWLER					LEADOFF BOWLER			4TH BOWLER					
	COMPLET E FRAMES	INCOMPL ETE FRAMES	AVG / FRAME	OVER- ALL FILL %	AVG 1ST BALL	1ST BALL "9+ %"	BAKER DBL STRIKES	BAKER DBL ATTPTS	BAKER DBL %	STRIKES	STRIKE ATTPTS	STRIKE %	ALL SPARES	ALL SPARE ATTPTS	ALL SPARE CONV %	MAKE- ABLE SPARES	MAKE- ABLE SPARE ATTPTS	MAKE- ABLE SPARE %	SINGLE PIN SPARES	SINGLE PIN SPARE ATTPTS	SINGLE PIN SPARE CONV %	MULTI- PIN MAKE- ABLE SPARES	MULTI- PIN MAKE- ABLE ATTPTS	MULTI- PIN MAKE- ABLE CONV %	SPLIT- SPARES	SPLIT ATTPTS	SPLIT CONV %	SPLIT LEAVE %	10TH FRAME ATTPTS	10TH FRAME AVG	10TH FRAME FILL %	10TH FRAME STRIKE %	10TH FRAME DBL %	LEAD- OFF ATTPTS	LEAD- OFF FILL %	LEAD- OFF STRIKE %	SETUP ATTPTS	SETUP %
<b>DUALS FEBRUARY 6</b>	<b>147</b>	<b>3</b>	<b>16.84</b>	<b>70.7%</b>	<b>8.37</b>	<b>53.3%</b>	<b>5</b>	<b>11</b>	<b>45.5%</b>	<b>45</b>	<b>150</b>	<b>30.0%</b>	<b>61</b>	<b>105</b>	<b>58.1%</b>	<b>59</b>	<b>87</b>	<b>67.8%</b>	<b>27</b>	<b>35</b>	<b>77.1%</b>	<b>32</b>	<b>52</b>	<b>61.5%</b>	<b>2</b>	<b>18</b>	<b>11.1%</b>	<b>12.0%</b>	<b>15</b>	<b>17.33</b>	<b>80.0%</b>	<b>26.7%</b>	<b>6.7%</b>	<b>15</b>	<b>66.7%</b>	<b>26.7%</b>	<b>15</b>	<b>33.3%</b>
<b>BAKER</b>	<b>47</b>	<b>3</b>	<b>16.45</b>	<b>66.0%</b>	<b>8.04</b>	<b>46.0%</b>	<b>5</b>	<b>11</b>	<b>45.5%</b>	<b>14</b>	<b>50</b>	<b>28.0%</b>	<b>19</b>	<b>36</b>	<b>52.8%</b>	<b>19</b>	<b>31</b>	<b>61.3%</b>	<b>9</b>	<b>9</b>	<b>100.0%</b>	<b>10</b>	<b>22</b>	<b>45.5%</b>	<b>0</b>	<b>5</b>	<b>0.0%</b>	<b>10.0%</b>	<b>5</b>	<b>20.60</b>	<b>100.0%</b>	<b>60.0%</b>	<b>20.0%</b>	<b>5</b>	<b>80.0%</b>	<b>40.0%</b>	<b>5</b>	<b>40.0%</b>
Alexandra Hasiotis	9	1	12.56	50.0%	7.40	30.0%	0	1	0.0%	1	10	10.0%	4	9	44.4%	4	8	50.0%	2	2	100.0%	2	6	33.3%	0	1	0.0%	10.0%	0					0			0	
Katlyn Newberry	9	1	16.56	70.0%	8.60	70.0%	1	1	100.0%	3	10	30.0%	4	7	57.1%	4	6	66.7%	4	4	100.0%	0	2	0.0%	0	1	0.0%	10.0%	0					0			5	40.0%
Rachel Steele	10	0	21.50	90.0%	8.80	70.0%	2	3	66.7%	6	10	60.0%	3	4	75.0%	3	4	75.0%	1	1	100.0%	2	3	66.7%	0	0		0.0%	5	20.60	100.0%	60.0%	20.0%	0			0	
Adrianna Pencek	10	0	11.90	30.0%	7.20	10.0%	1	3	33.3%	1	10	10.0%	2	9	22.2%	2	6	33.3%	0	0		2	6	33.3%	0	3	0.0%	30.0%	0					0			0	
Kaitlyn O'Hara	9	1	19.67	90.0%	8.20	50.0%	1	3	33.3%	3	10	30.0%	6	7	85.7%	6	7	85.7%	2	2	100.0%	4	5	80.0%	0	0		0.0%	0					5	80.0%	40.0%	0	
<b>TRADITIONAL</b>	<b>100</b>	<b>0</b>	<b>17.03</b>	<b>73.0%</b>	<b>8.53</b>	<b>57.0%</b>	<b>0</b>	<b>0</b>		<b>31</b>	<b>100</b>	<b>31.0%</b>	<b>42</b>	<b>69</b>	<b>60.9%</b>	<b>40</b>	<b>56</b>	<b>71.4%</b>	<b>18</b>	<b>26</b>	<b>69.2%</b>	<b>22</b>	<b>30</b>	<b>73.3%</b>	<b>2</b>	<b>13</b>	<b>15.4%</b>	<b>13.0%</b>	<b>10</b>	<b>15.70</b>	<b>70.0%</b>	<b>10.0%</b>	<b>0.0%</b>	<b>10</b>	<b>60.0%</b>	<b>20.0%</b>	<b>10</b>	<b>30.0%</b>
Kaitlyn Good	20	0	14.00	55.0%	8.15	45.0%	0	0		6	20	30.0%	5	14	35.7%	5	9	55.6%	2	3	66.7%	3	6	50.0%	0	5	0.0%	25.0%	2	13.50	50.0%	0.0%	0.0%	2	0.0%	0.0%	2	0.0%
Katlyn Newberry	20	0	16.75	75.0%	8.70	70.0%	0	0		5	20	25.0%	10	15	66.7%	10	13	76.9%	7	9	77.8%	3	4	75.0%	0	2	0.0%	10.0%	2	19.00	100.0%	0.0%	0.0%	2	100.0%	100.0%	2	50.0%
Rachel Steele	20	0	19.65	80.0%	8.95	60.0%	0	0		9	20	45.0%	7	11	63.6%	6	8	75.0%	1	3	33.3%	5	5	100.0%	1	3	33.3%	15.0%	2	14.50	50.0%	0.0%	0.0%	2	100.0%	0.0%	2	0.0%
Adrianna Pencek	20	0	17.30	70.0%	8.40	55.0%	0	0		6	20	30.0%	8	14	57.1%	7	12	58.3%	3	5	60.0%	4	7	57.1%	1	2	50.0%	10.0%	2	12.50	50.0%	0.0%	0.0%	2	0.0%	0.0%	2	50.0%
Kaitlyn O'Hara	20	0	17.45	85.0%	8.45	55.0%	0	0		5	20	25.0%	12	15	80.0%	12	14	85.7%	5	6	83.3%	7	8	87.5%	0	1	0.0%	5.0%	2	19.00	100.0%	50.0%	0.0%	2	100.0%	0.0%	2	50.0%

# DAEMEN COLLEGE

## 2017-18 TEAM STATISTICS BY EVENT BY FORMAT BY PLAYER

division	(All)																																					
Row Labels	All Bowlers																								ANCHOR BOWLER					LEADOFF BOWLER			4TH BOWLER					
	COMPLET E FRAMES	INCOMPL ETE FRAMES	AVG / FRAME	OVER-ALL FILL %	AVG 1ST BALL	1ST BALL "9+ %" "	BAKER DBL STRIKES	BAKER DBL ATTPTS	BAKER DBL %	STRIKES	STRIKE ATTPTS	STRIKE %	ALL SPARES	ALL SPARE ATTPTS	ALL SPARE CONV %	MAKE-ABLE SPARES	MAKE-ABLE SPARE ATTPTS	MAKE-ABLE SPARE %	SINGLE PIN SPARES	SINGLE PIN SPARE ATTPTS	SINGLE PIN SPARE CONV %	MULTI-PIN MAKE-ABLE SPARES	MULTI-PIN MAKE-ABLE SPARE ATTPTS	MULTI-PIN MAKE-ABLE CONV %	SPLIT-SPARES	SPLIT ATTPTS	SPLIT CONV %	SPLIT LEAVE %	10TH FRAME ATTPTS	10TH FRAME AVG	10TH FRAME FILL %	10TH FRAME STRIKE %	10TH FRAME DBL %	LEAD-OFF ATTPTS	LEAD-OFF FILL %	LEAD-OFF STRIKE %	SETUP ATTPTS	SETUP %
PAT LACY MEMORIAL	250	0	17.08	73.2%	8.42	55.6%	0	0		75	250	30.0%	108	175	61.7%	99	146	67.8%	46	64	71.9%	53	82	64.6%	9	29	31.0%	11.6%	25	18.12	80.0%	32.0%	12.0%	25	76.0%	40.0%	25	32.0%
TRADITIONAL	250	0	17.08	73.2%	8.42	55.6%	0	0		75	250	30.0%	108	175	61.7%	99	146	67.8%	46	64	71.9%	53	82	64.6%	9	29	31.0%	11.6%	25	18.12	80.0%	32.0%	12.0%	25	76.0%	40.0%	25	32.0%
Alexandra Hasiotis	42	0	17.31	73.8%	8.50	54.8%	0	0		13	42	31.0%	18	29	62.1%	15	23	65.2%	8	10	80.0%	7	13	53.8%	3	6	50.0%	14.3%	4	19.75	75.0%	50.0%	25.0%	4	100.0%	75.0%	4	25.0%
Kaitlyn Good	50	0	18.34	84.0%	8.52	64.0%	0	0		16	50	32.0%	26	34	76.5%	24	31	77.4%	12	16	75.0%	12	15	80.0%	2	3	66.7%	6.0%	5	17.80	80.0%	40.0%	20.0%	5	100.0%	40.0%	5	20.0%
Katlyn Newberry	31	0	16.39	74.2%	8.00	54.8%	0	0		9	31	29.0%	14	22	63.6%	14	22	63.6%	6	8	75.0%	8	14	57.1%	0	0		0.0%	3	18.00	100.0%	0.0%	0.0%	4	75.0%	25.0%	3	66.7%
Madison Rogacki	20	0	13.35	50.0%	8.10	45.0%	0	0		2	20	10.0%	8	18	44.4%	8	15	53.3%	5	7	71.4%	3	8	37.5%	0	3	0.0%	15.0%	2	14.00	50.0%	0.0%	0.0%	2	100.0%	50.0%	2	50.0%
Rachel Steele	50	0	17.88	74.0%	8.46	54.0%	0	0		18	50	36.0%	19	32	59.4%	17	23	73.9%	4	9	44.4%	13	14	92.9%	2	9	22.2%	18.0%	5	19.40	80.0%	40.0%	20.0%	5	40.0%	20.0%	5	60.0%
Adrianna Pencek	50	0	17.54	76.0%	8.62	56.0%	0	0		17	50	34.0%	21	33	63.6%	19	27	70.4%	10	11	90.9%	9	16	56.3%	2	6	33.3%	12.0%	5	17.80	80.0%	40.0%	0.0%	5	60.0%	40.0%	5	0.0%
Kaitlyn O'Hara	7	0	11.43	28.6%	8.29	42.9%	0	0		0	7	0.0%	2	7	28.6%	2	5	40.0%	1	3	33.3%	1	2	50.0%	0	2	0.0%	28.6%	1	17.00	100.0%	0.0%	0.0%	0			1	0.0%

# DAEMEN COLLEGE

## 2017-18 TEAM STATISTICS BY EVENT BY FORMAT BY PLAYER

division	(All)																																						
Row Labels	All Bowlers																								ANCHOR BOWLER					LEADOFF BOWLER			4TH BOWLER						
	COMPLET E FRAMES	INCOMPL ETE FRAMES	AVG / FRAME	OVER- ALL FILL %	AVG 1ST BALL	1ST BALL "9+ %"	BAKER DBL STRIKES	BAKER DBL ATTPTS	BAKER DBL %	STRIKES	STRIKE ATTPTS	STRIKE %	ALL SPARES	ALL SPARE ATTPTS	ALL SPARE CONV %	MAKE- ABLE SPARES	MAKE- ABLE SPARE ATTPTS	MAKE- ABLE SPARE %	SINGLE PIN SPARES	SINGLE PIN SPARE ATTPTS	SINGLE PIN SPARE CONV %	MULTI- PIN MAKE- ABLE SPARES	MULTI- PIN MAKE- ABLE ATTPTS	MULTI- PIN MAKE- ABLE CONV %	SPLIT- SPARES	SPLIT ATTPTS	SPLIT CONV %	SPLIT LEAVE %	10TH FRAME ATTPTS	10TH FRAME AVG	10TH FRAME FILL %	10TH FRAME STRIKE %	10TH FRAME DBL %	LEAD- OFF ATTPTS	LEAD- OFF FILL %	LEAD- OFF STRIKE %	SETUP ATTPTS	SETUP %	
<b>FEBRUARY 2021 DUALS</b>	<b>114</b>	<b>6</b>	<b>18.00</b>	<b>76.7%</b>	<b>8.73</b>	<b>60.0%</b>	<b>15</b>	<b>27</b>	<b>55.6%</b>	<b>46</b>	<b>120</b>	<b>38.3%</b>	<b>46</b>	<b>74</b>	<b>62.2%</b>	<b>44</b>	<b>62</b>	<b>71.0%</b>	<b>22</b>	<b>26</b>	<b>84.6%</b>	<b>22</b>	<b>36</b>	<b>61.1%</b>	<b>2</b>	<b>12</b>	<b>16.7%</b>	<b>10.0%</b>	<b>12</b>	<b>17.17</b>	<b>75.0%</b>	<b>25.0%</b>	<b>8.3%</b>	<b>12</b>	<b>75.0%</b>	<b>16.7%</b>	<b>12</b>	<b>50.0%</b>	
<b>BAKER</b>	<b>65</b>	<b>5</b>	<b>17.54</b>	<b>72.9%</b>	<b>8.76</b>	<b>62.9%</b>	<b>15</b>	<b>27</b>	<b>55.6%</b>	<b>29</b>	<b>70</b>	<b>41.4%</b>	<b>22</b>	<b>41</b>	<b>53.7%</b>	<b>22</b>	<b>34</b>	<b>64.7%</b>	<b>12</b>	<b>15</b>	<b>80.0%</b>	<b>10</b>	<b>19</b>	<b>52.6%</b>	<b>0</b>	<b>7</b>	<b>0.0%</b>	<b>10.0%</b>	<b>7</b>	<b>14.29</b>	<b>57.1%</b>	<b>28.6%</b>	<b>0.0%</b>	<b>7</b>	<b>85.7%</b>	<b>28.6%</b>	<b>7</b>	<b>57.1%</b>	
Kaitlyn Good	13	1	20.00	85.7%	9.07	71.4%	4	5	80.0%	8	14	57.1%	4	6	66.7%	4	5	80.0%	2	2	100.0%	2	3	66.7%	0	1	0.0%	7.1%	0					0			0		
Madison Rogacki	12	2	14.92	64.3%	8.64	57.1%	1	4	25.0%	5	14	35.7%	4	9	44.4%	4	8	50.0%	2	3	66.7%	2	5	40.0%	0	1	0.0%	7.1%	0					0			0		
Rachel Steele	14	0	14.86	50.0%	8.71	57.1%	3	7	42.9%	5	14	35.7%	2	9	22.2%	2	5	40.0%	2	3	66.7%	0	2	0.0%	0	4	0.0%	28.6%	7	14.29	57.1%	28.6%	0.0%	0			0		
Adrianna Pencek	13	1	20.38	85.7%	8.71	64.3%	6	8	75.0%	7	14	50.0%	5	7	71.4%	5	7	71.4%	1	2	50.0%	4	5	80.0%	0	0		0.0%	0					0			7	57.1%	
Kaitlyn O'Hara	13	1	17.54	78.6%	8.64	64.3%	1	3	33.3%	4	14	28.6%	7	10	70.0%	7	9	77.8%	5	5	100.0%	2	4	50.0%	0	1	0.0%	7.1%	0					7	85.7%	28.6%	0		
<b>TRADITIONAL</b>	<b>49</b>	<b>1</b>	<b>18.61</b>	<b>82.0%</b>	<b>8.69</b>	<b>56.0%</b>	<b>0</b>	<b>0</b>		<b>17</b>	<b>50</b>	<b>34.0%</b>	<b>24</b>	<b>33</b>	<b>72.7%</b>	<b>22</b>	<b>28</b>	<b>78.6%</b>	<b>10</b>	<b>11</b>	<b>90.9%</b>	<b>12</b>	<b>17</b>	<b>70.6%</b>	<b>2</b>	<b>5</b>	<b>40.0%</b>	<b>10.0%</b>	<b>5</b>	<b>21.20</b>	<b>100.0%</b>	<b>20.0%</b>	<b>20.0%</b>	<b>5</b>	<b>60.0%</b>	<b>0.0%</b>	<b>5</b>	<b>40.0%</b>	
Kaitlyn Good	10	0	20.30	80.0%	9.10	80.0%	0	0		4	10	40.0%	4	6	66.7%	4	5	80.0%	3	4	75.0%	1	1	100.0%	0	1	0.0%	10.0%	1	30.00	100.0%	100.0%	100.0%	100.0%	1	0.0%	0.0%	1	0.0%
Katlyn Newberry	6	1	11.83	42.9%	8.43	42.9%	0	0		2	7	28.6%	1	5	20.0%	1	3	33.3%	1	1	100.0%	0	2	0.0%	0	2	0.0%	28.6%	0					1	0.0%	0.0%	1	0.0%	
Madison Rogacki	3	0	12.33	33.3%	6.67	0.0%	0	0		0	3	0.0%	1	3	33.3%	1	3	33.3%	0	0		1	3	33.3%	0	0		0.0%	1	19.00	100.0%	0.0%	0.0%	0			0		
Rachel Steele	10	0	20.40	100.0%	9.20	80.0%	0	0		4	10	40.0%	6	6	100.0%	6	6	100.0%	4	4	100.0%	2	2	100.0%	0	0		0.0%	1	18.00	100.0%	0.0%	0.0%	1	100.0%	0.0%	1	100.0%	
Adrianna Pencek	10	0	22.20	100.0%	9.00	60.0%	0	0		5	10	50.0%	5	5	100.0%	5	5	100.0%	1	1	100.0%	4	4	100.0%	0	0		0.0%	1	19.00	100.0%	0.0%	0.0%	1	100.0%	0.0%	1	100.0%	
Kaitlyn O'Hara	10	0	17.50	90.0%	8.20	30.0%	0	0		2	10	20.0%	7	8	87.5%	5	6	83.3%	1	1	100.0%	4	5	80.0%	2	2	100.0%	20.0%	1	20.00	100.0%	0.0%	0.0%	1	100.0%	0.0%	1	0.0%	

# DAEMEN COLLEGE

## 2017-18 TEAM STATISTICS BY EVENT BY FORMAT BY PLAYER

division	(All)																																					
Row Labels	All Bowlers																								ANCHOR BOWLER					LEADOFF BOWLER			4TH BOWLER					
	COMPLETE FRAMES	INCOMPLETE FRAMES	AVG / FRAME	OVER-ALL FILL %	AVG 1ST BALL	1ST BALL "9+ %"	BAKER DBL STRIKES	BAKER DBL ATTPTS	BAKER DBL %	STRIKES	STRIKE ATTPTS	STRIKE %	ALL SPARES	ALL SPARE ATTPTS	ALL SPARE CONV %	MAKE-ABLE SPARES	MAKE-ABLE SPARE ATTPTS	MAKE-ABLE SPARE %	SINGLE PIN SPARES	SINGLE PIN SPARE ATTPTS	SINGLE PIN SPARE CONV %	MULTI-PIN MAKE-ABLE SPARES	MULTI-PIN MAKE-ABLE ATTPTS	MULTI-PIN MAKE-ABLE CONV %	SPLIT-SPARES	SPLIT ATTPTS	SPLIT CONV %	SPLIT LEAVE %	10TH FRAME ATTPTS	10TH FRAME AVG	10TH FRAME FILL %	10TH FRAME STRIKE %	10TH FRAME DBL %	LEAD-OFF ATTPTS	LEAD-OFF FILL %	LEAD-OFF STRIKE %	SETUP ATTPTS	SETUP %
<b>MOLLOY BAKER</b>	497	3	17.49	73.6%	8.57	60.4%	48	148	32.4%	163	500	32.6%	205	337	60.8%	197	289	68.2%	110	139	79.1%	87	150	58.0%	8	48	16.7%	9.6%	50	18.00	78.0%	30.0%	14.0%	50	78.0%	24.0%	50	46.0%
<b>BAKER</b>	497	3	17.49	73.6%	8.57	60.4%	48	148	32.4%	163	500	32.6%	205	337	60.8%	197	289	68.2%	110	139	79.1%	87	150	58.0%	8	48	16.7%	9.6%	50	18.00	78.0%	30.0%	14.0%	50	78.0%	24.0%	50	46.0%
Alexandra Syrotynski	21	1	16.05	68.2%	8.41	54.5%	1	4	25.0%	5	22	22.7%	10	17	58.8%	10	16	62.5%	6	7	85.7%	4	9	44.4%	0	1	0.0%	4.5%	0					0			0	
Alexandra Hasiotis	46	0	16.04	69.6%	8.37	50.0%	1	4	25.0%	12	46	26.1%	20	34	58.8%	18	27	66.7%	8	11	72.7%	10	16	62.5%	2	7	28.6%	15.2%	0					22	77.3%	27.3%	0	
Kaitlyn Good	76	0	18.95	75.0%	8.80	68.4%	10	22	45.5%	35	76	46.1%	22	41	53.7%	22	34	64.7%	15	17	88.2%	7	17	41.2%	0	7	0.0%	9.2%	0					0			0	
Katlyn Newberry	99	1	18.83	78.0%	8.70	66.0%	17	41	41.5%	42	100	42.0%	36	58	62.1%	35	47	74.5%	18	24	75.0%	17	23	73.9%	1	11	9.1%	11.0%	0					0			50	46.0%
Madison Rogacki	32	1	15.91	69.7%	8.39	45.5%	1	10	10.0%	7	33	21.2%	16	26	61.5%	14	22	63.6%	5	8	62.5%	9	14	64.3%	2	4	50.0%	12.1%	0					0			0	
Rachel Steele	95	0	17.72	75.8%	8.63	64.2%	13	39	33.3%	29	95	30.5%	43	66	65.2%	43	61	70.5%	27	32	84.4%	16	29	55.2%	0	5	0.0%	5.3%	47	18.13	78.7%	29.8%	14.9%	0			0	
Adrianna Pencek	72	0	16.39	68.1%	8.44	61.1%	4	17	23.5%	20	72	27.8%	29	52	55.8%	28	46	60.9%	16	24	66.7%	12	22	54.5%	1	6	16.7%	8.3%	3	16.00	66.7%	33.3%	0.0%	0			0	
Kaitlyn O'Hara	56	0	16.84	75.0%	8.38	51.8%	1	11	9.1%	13	56	23.2%	29	43	67.4%	27	36	75.0%	15	16	93.8%	12	20	60.0%	2	7	28.6%	12.5%	0					28	78.6%	21.4%	0	

# DAEMEN COLLEGE

## 2017-18 TEAM STATISTICS BY EVENT BY FORMAT BY PLAYER

division	(All)																																					
	All Bowlers																								ANCHOR BOWLER					LEADOFF BOWLER			4TH BOWLER					
Row Labels	COMPLET E FRAMES	INCOMPL ETE FRAMES	AVG / FRAME	OVER- ALL FILL %	AVG 1ST BALL	1ST BALL "9+ %"	BAKER DBL STRIKES	BAKER DBL ATTPTS	BAKER DBL %	STRIKES	STRIKE ATTPTS	STRIKE %	ALL SPARES	ALL SPARE ATTPTS	ALL SPARE CONV %	MAKE- ABLE SPARES	MAKE- ABLE SPARE ATTPTS	MAKE- ABLE SPARE %	SINGLE PIN SPARES	SINGLE PIN SPARE ATTPTS	SINGLE PIN SPARE CONV %	MULTI- PIN MAKE- ABLE SPARES	MULTI- PIN MAKE- ABLE ATTPTS	MULTI- PIN MAKE- ABLE CONV %	SPLIT- SPARES	SPLIT ATTPTS	SPLIT CONV %	SPLIT LEAVE %	10TH FRAME ATTPTS	10TH FRAME AVG	10TH FRAME FILL %	10TH FRAME STRIKE %	10TH FRAME DBL %	LEAD- OFF ATTPTS	LEAD- OFF FILL %	LEAD- OFF STRIKE %	SETUP ATTPTS	SETUP %
<b>ECC CHAMPIONSHIPS</b>	546	4	17.14	74.7%	8.54	58.4%	64	158	40.5%	173	550	31.5%	238	377	63.1%	230	319	72.1%	117	148	79.1%	113	171	66.1%	8	58	13.8%	10.5%	55	17.85	83.6%	27.3%	9.1%	55	69.1%	29.1%	55	32.7%
<b>BAKER</b>	546	4	17.14	74.7%	8.54	58.4%	64	158	40.5%	173	550	31.5%	238	377	63.1%	230	319	72.1%	117	148	79.1%	113	171	66.1%	8	58	13.8%	10.5%	55	17.85	83.6%	27.3%	9.1%	55	69.1%	29.1%	55	32.7%
Alexandra Syrotynski	15	1	15.27	68.8%	8.31	43.8%	1	3	33.3%	5	16	31.3%	6	11	54.5%	6	10	60.0%	2	2	100.0%	4	8	50.0%	0	1	0.0%	6.3%	0					1	100.0%	100.0%	0	
Alexandra Hasiotis	4	0	14.00	50.0%	8.75	75.0%	0	1	0.0%	0	4	0.0%	2	4	50.0%	2	4	50.0%	1	3	33.3%	1	1	100.0%	0	0		0.0%	0					0			0	
Kaitlyn Good	103	0	16.91	71.8%	8.49	58.3%	11	28	39.3%	33	103	32.0%	41	70	58.6%	39	60	65.0%	20	27	74.1%	19	33	57.6%	2	10	20.0%	9.7%	0					4	50.0%	0.0%	0	
Katlyn Newberry	109	1	18.22	81.8%	8.75	66.4%	20	37	54.1%	39	110	35.5%	51	71	71.8%	50	62	80.6%	30	34	88.2%	20	28	71.4%	1	9	11.1%	8.2%	4	18.00	100.0%	25.0%	25.0%	0			51	31.4%
Madison Rogacki	0	1		100.0%		100.0%	0	0		1	1	100.0%	0	0		0	0		0	0		0	0		0	0		0.0%	0					0			0	
Rachel Steele	110	0	17.95	80.9%	8.58	59.1%	14	41	34.1%	34	110	30.9%	55	76	72.4%	54	67	80.6%	27	31	87.1%	27	36	75.0%	1	9	11.1%	8.2%	51	17.84	82.4%	27.5%	7.8%	0			4	50.0%
Adrianna Pencek	106	0	16.32	69.8%	8.49	58.5%	11	31	35.5%	32	106	30.2%	42	74	56.8%	40	61	65.6%	21	30	70.0%	19	31	61.3%	2	13	15.4%	12.3%	0					0			0	
Kaitlyn O'Hara	99	1	16.58	70.0%	8.41	50.0%	7	17	41.2%	29	100	29.0%	41	71	57.7%	39	55	70.9%	16	21	76.2%	23	34	67.6%	2	16	12.5%	16.0%	0					50	70.0%	30.0%	0	
<b>Grand Total</b>	<b>2675</b>	<b>30</b>	<b>17.05</b>	<b>72.9%</b>	<b>8.49</b>	<b>57.0%</b>	<b>212</b>	<b>559</b>	<b>37.9%</b>	<b>869</b>	<b>2705</b>	<b>32.1%</b>	<b>1104</b>	<b>1836</b>	<b>60.1%</b>	<b>1064</b>	<b>1583</b>	<b>67.2%</b>	<b>517</b>	<b>674</b>	<b>76.7%</b>	<b>547</b>	<b>909</b>	<b>60.2%</b>	<b>40</b>	<b>253</b>	<b>15.8%</b>	<b>9.4%</b>	<b>270</b>	<b>17.73</b>	<b>80.0%</b>	<b>31.5%</b>	<b>10.4%</b>	<b>271</b>	<b>72.0%</b>	<b>26.9%</b>	<b>271</b>	<b>36.5%</b>

# DAEMEN COLLEGE

## 2017-18 TEAM STATISTICS BY PLAYER BY FORMAT BY EVENT

division	(All)																								ANCHOR BOWLER					LEADOFF BOWLER			4TH BOWLER					
Row Labels	All Bowlers																								10TH FRAME	10TH FRAME	10TH FRAME	10TH FRAME	10TH FRAME	LEAD-OFF	LEAD-OFF	LEAD-OFF	SETUP	SETUP				
	COMPLET E FRAMES	INCOMPL ETE FRAMES	AVG / FRAME	OVER-ALL FILL %	AVG 1ST BALL	1ST BALL "9+ %"	BAKER DBL STRIKES	BAKER DBL ATTPTS	BAKER DBL %	STRIKES	STRIKE ATTPTS	STRIKE %	ALL SPARES	ALL SPARE ATTPTS	ALL SPARE CONV %	MAKE-ABLE SPARES	MAKE-ABLE SPARE ATTPTS	MAKE-ABLE SPARE %	SINGLE PIN SPARES	SINGLE PIN SPARE ATTPTS	SINGLE PIN SPARE CONV %	MULTI-PIN MAKE-ABLE SPARES	MULTI-PIN MAKE-ABLE ATTPTS	MULTI-PIN MAKE-ABLE CONV %	SPLIT-SPARES	SPLIT ATTPTS	SPLIT CONV %	SPLIT LEAVE %	ATTPTS	AVG	FILL %	STRIKE %	DBL %	ATTPTS	%	ATTPTS	%	
Alexandra Syrotynski	143	3	16.91	71.2%	8.54	56.8%	10	35	28.6%	47	146	32.2%	57	99	57.6%	55	85	64.7%	24	36	66.7%	31	49	63.3%	2	14	14.3%	9.6%	2	14.00	50.0%	0.0%	0.0%	19	78.9%	36.8%	3	33.3%
BAKER	134	3	16.91	71.5%	8.47	54.0%	10	35	28.6%	43	137	31.4%	55	94	58.5%	53	80	66.3%	22	31	71.0%	31	49	63.3%	2	14	14.3%	10.2%	0					19	78.9%	36.8%	2	50.0%
DUAL AT KENMORE	6	0	9.33	16.7%	6.33	16.7%	0	4	0.0%	0	6	0.0%	1	6	16.7%	1	3	33.3%	1	1	100.0%	0	2	0.0%	0	3	0.0%	50.0%	0					0			0	
MEDAILLE INVITE	82	1	18.07	77.1%	8.69	59.0%	6	20	30.0%	29	83	34.9%	35	54	64.8%	33	46	71.7%	13	20	65.0%	20	26	76.9%	2	8	25.0%	9.6%	0					18	77.8%	33.3%	2	50.0%
DUALS WEEK ENDING 1209	10	0	16.20	70.0%	8.40	50.0%	2	4	50.0%	4	10	40.0%	3	6	50.0%	3	5	60.0%	0	1	0.0%	3	4	75.0%	0	1	0.0%	10.0%	0					0			0	
MOLLOY BAKER	21	1	16.05	68.2%	8.41	54.5%	1	4	25.0%	5	22	22.7%	10	17	58.8%	10	16	62.5%	6	7	85.7%	4	9	44.4%	0	1	0.0%	4.5%	0					0			0	
ECC CHAMPIONSHIPS	15	1	15.27	68.8%	8.31	43.8%	1	3	33.3%	5	16	31.3%	6	11	54.5%	6	10	60.0%	2	2	100.0%	4	8	50.0%	0	1	0.0%	6.3%	0					1	100.0%	100.0%	0	
TRADITIONAL	9	0	16.89	66.7%	9.44	100.0%	0	0		4	9	44.4%	2	5	40.0%	2	5	40.0%	2	5	40.0%	0	0		0	0		0.0%	2	14.00	50.0%	0.0%	0.0%	0			1	0.0%
DUALS WEEK ENDING 1209	9	0	16.89	66.7%	9.44	100.0%	0	0		4	9	44.4%	2	5	40.0%	2	5	40.0%	2	5	40.0%	0	0		0	0		0.0%	2	14.00	50.0%	0.0%	0.0%	0			1	0.0%

# DAEMEN COLLEGE

## 2017-18 TEAM STATISTICS BY PLAYER BY FORMAT BY EVENT

division (All)

Row Labels	All Bowlers																								ANCHOR BOWLER					LEADOFF BOWLER			4TH BOWLER						
	COMPLET E FRAMES	INCOMPL ETE FRAMES	AVG / FRAME	OVER- ALL FILL %	AVG 1ST BALL	1ST BALL "9+ %"	BAKER DBL STRIKES	BAKER DBL ATTPTS	BAKER DBL %	STRIKES	STRIKE ATTPTS	STRIKE %	ALL SPARES	ALL SPARE ATTPTS	ALL SPARE CONV %	MAKE- ABLE SPARES	MAKE- ABLE SPARE ATTPTS	MAKE- ABLE SPARE %	SINGLE PIN SPARES	SINGLE PIN SPARE ATTPTS	SINGLE PIN SPARE CONV %	MULTI- PIN MAKE- ABLE SPARES	MULTI- PIN MAKE- ABLE SPARE ATTPTS	MULTI- PIN MAKE- ABLE CONV %	SPLIT- SPARES	SPLIT ATTPTS	SPLIT CONV %	SPLIT LEAVE %	10TH FRAME ATTPTS	10TH FRAME AVG	10TH FRAME FILL %	10TH FRAME STRIKE %	10TH FRAME DBL %	LEAD- OFF ATTPTS	LEAD- OFF %	LEAD- OFF STRIKE %	SETUP ATTPTS	SETUP %	
Alexandra Hasiotis	246	3	16.32	71.9%	8.29	53.0%	3	21	14.3%	59	249	23.7%	120	190	63.2%	111	165	67.3%	56	73	76.7%	55	92	59.8%	9	25	36.0%	10.0%	16	17.06	81.3%	25.0%	6.3%	62	72.6%	24.2%	12	25.0%	
BAKER	124	3	15.46	66.9%	8.18	48.8%	3	21	14.3%	29	127	22.8%	56	98	57.1%	52	84	61.9%	24	33	72.7%	28	51	54.9%	4	14	28.6%	11.0%	4	15.75	75.0%	25.0%	0.0%	50	70.0%	22.0%	0		
DUAL AT KENMORE	8	0	16.63	75.0%	8.88	62.5%	0	2	0.0%	3	8	37.5%	3	5	60.0%	2	2	100.0%	2	2	100.0%	0	0		1	3	33.3%	37.5%	4	15.75	75.0%	25.0%	0.0%	0			0		
MEDAILLE INVITE	35	1	15.51	66.7%	8.25	58.3%	0	9	0.0%	9	36	25.0%	15	27	55.6%	14	25	56.0%	9	12	75.0%	5	13	38.5%	1	2	50.0%	5.6%	0					18	66.7%	27.8%	0		
DUALS WEEK ENDING 1119	13	0	15.08	69.2%	7.54	30.8%	1	2	50.0%	2	13	15.4%	7	11	63.6%	7	10	70.0%	2	2	100.0%	5	8	62.5%	0	1	0.0%	7.7%	0					5	60.0%	0.0%	0		
DUALS WEEK ENDING 1209	9	1	15.33	70.0%	7.80	30.0%	1	2	50.0%	2	10	20.0%	5	8	62.5%	5	8	62.5%	0	1	0.0%	5	7	71.4%	0	0		0.0%	0					5	60.0%	0.0%	0		
DUALS FEBRUARY 6	9	1	12.56	50.0%	7.40	30.0%	0	1	0.0%	1	10	10.0%	4	9	44.4%	4	8	50.0%	2	2	100.0%	2	6	33.3%	0	1	0.0%	10.0%	0					0				0	
MOLLOY BAKER	46	0	16.04	69.6%	8.37	50.0%	1	4	25.0%	12	46	26.1%	20	34	58.8%	18	27	66.7%	8	11	72.7%	10	16	62.5%	2	7	28.6%	15.2%	0					22	77.3%	27.3%	0		
ECC CHAMPIONSHIPS	4	0	14.00	50.0%	8.75	75.0%	0	1	0.0%	0	4	0.0%	2	4	50.0%	2	4	50.0%	1	3	33.3%	1	1	100.0%	0	0		0.0%	0					0				0	
TRADITIONAL	122	0	17.19	77.0%	8.40	57.4%	0	0		30	122	24.6%	64	92	69.6%	59	81	72.8%	32	40	80.0%	27	41	65.9%	5	11	45.5%	9.0%	12	17.50	83.3%	25.0%	8.3%	12	83.3%	33.3%	12	25.0%	
DUAL AT KENMORE	20	0	16.35	75.0%	8.40	65.0%	0	0		4	20	20.0%	11	16	68.8%	11	15	73.3%	8	9	88.9%	3	6	50.0%	0	1	0.0%	5.0%	2	11.50	50.0%	0.0%	0.0%	2	50.0%	0.0%	2	50.0%	
DUALS WEEK ENDING 1119	40	0	16.45	72.5%	8.28	52.5%	0	0		8	40	20.0%	21	32	65.6%	20	29	69.0%	8	13	61.5%	12	16	75.0%	1	3	33.3%	7.5%	4	18.00	100.0%	25.0%	0.0%	4	75.0%	0.0%	4	25.0%	
DUALS WEEK ENDING 1209	20	0	19.25	95.0%	8.45	65.0%	0	0		5	20	25.0%	14	15	93.3%	13	14	92.9%	8	8	100.0%	5	6	83.3%	1	1	100.0%	5.0%	2	18.00	100.0%	0.0%	0.0%	2	100.0%	50.0%	2	0.0%	
PAT LACY MEMORIAL	42	0	17.31	73.8%	8.50	54.8%	0	0		13	42	31.0%	18	29	62.1%	15	23	65.2%	8	10	80.0%	7	13	53.8%	3	6	50.0%	14.3%	4	19.75	75.0%	50.0%	25.0%	4	100.0%	75.0%	4	25.0%	

# DAEMEN COLLEGE

## 2017-18 TEAM STATISTICS BY PLAYER BY FORMAT BY EVENT

division (All)

Row Labels	All Bowlers																								ANCHOR BOWLER					LEADOFF BOWLER			4TH BOWLER					
	COMPLET E FRAMES	INCOMPL ETE FRAMES	AVG / FRAME	OVER- ALL FILL %	AVG 1ST BALL	1ST BALL "9+ %"	BAKER DBL STRIKES	BAKER DBL ATTPPTS	BAKER DBL %	STRIKES	STRIKE ATTPPTS	STRIKE %	ALL SPARES	ALL SPARE ATTPPTS	ALL SPARE CONV %	MAKE- ABLE SPARES	MAKE- ABLE SPARE ATTPPTS	MAKE- ABLE SPARE %	SINGLE PIN SPARES	SINGLE PIN SPARE ATTPPTS	SINGLE PIN SPARE CONV %	MULTI- PIN MAKE- ABLE SPARES	MULTI- PIN MAKE- ABLE ATTPPTS	MULTI- PIN MAKE- ABLE CONV %	SPLIT- SPARES	SPLIT ATTPPTS	SPLIT CONV %	SPLIT LEAVE %	10TH FRAME ATTPPTS	10TH FRAME AVG	10TH FRAME FILL %	10TH FRAME STRIKE %	10TH FRAME DBL %	LEAD- OFF ATTPPTS	LEAD- OFF %	LEAD- OFF STRIKE %	SETUP ATTPPTS	SETUP %
Kaitlyn Good	473	3	17.33	73.3%	8.59	60.5%	38	93	40.9%	168	476	35.3%	181	308	58.8%	175	264	66.3%	92	120	76.7%	83	144	57.6%	6	44	13.6%	9.2%	14	18.43	78.6%	50.0%	21.4%	19	63.2%	15.8%	51	31.4%
BAKER	326	2	17.42	72.9%	8.62	61.6%	38	93	40.9%	121	328	36.9%	118	207	57.0%	114	174	65.5%	64	81	79.0%	50	93	53.8%	4	33	12.1%	10.1%	0					4	50.0%	0.0%	36	33.3%
DUAL AT KENMORE	7	1	23.57	100.0%	9.25	87.5%	1	3	33.3%	5	8	62.5%	3	3	100.0%	3	3	100.0%	2	2	100.0%	1	1	100.0%	0	0		0.0%	0					0			0	
MEDAILLE INVITE	106	0	16.46	71.7%	8.64	59.4%	9	27	33.3%	35	106	33.0%	41	71	57.7%	39	59	66.1%	21	28	75.0%	18	31	58.1%	2	12	16.7%	11.3%	0					0			28	32.1%
DUALS WEEK ENDING 1119	21	0	15.52	57.1%	8.00	47.6%	3	8	37.5%	5	21	23.8%	7	16	43.8%	7	13	53.8%	4	5	80.0%	3	8	37.5%	0	3	0.0%	14.3%	0					0			8	37.5%
FEBRUARY 2021 DUALS	13	1	20.00	85.7%	9.07	71.4%	4	5	80.0%	8	14	57.1%	4	6	66.7%	4	5	80.0%	2	2	100.0%	2	3	66.7%	0	1	0.0%	7.1%	0					0			0	
MOLLOY BAKER	76	0	18.95	75.0%	8.80	68.4%	10	22	45.5%	35	76	46.1%	22	41	53.7%	22	34	64.7%	15	17	88.2%	7	17	41.2%	0	7	0.0%	9.2%	0					0			0	
ECC CHAMPIONSHIPS	103	0	16.91	71.8%	8.49	58.3%	11	28	39.3%	33	103	32.0%	41	70	58.6%	39	60	65.0%	20	27	74.1%	19	33	57.6%	2	10	20.0%	9.7%	0					4	50.0%	0.0%	0	
TRADITIONAL	147	1	17.13	74.3%	8.54	58.1%	0	0		47	148	31.8%	63	101	62.4%	61	90	67.8%	28	39	71.8%	33	51	64.7%	2	11	18.2%	7.4%	14	18.43	78.6%	50.0%	21.4%	15	66.7%	20.0%	15	26.7%
DUAL AT KENMORE	20	0	17.50	80.0%	8.65	55.0%	0	0		6	20	30.0%	10	14	71.4%	10	14	71.4%	4	5	80.0%	6	9	66.7%	0	0		0.0%	2	14.00	50.0%	50.0%	0.0%	2	50.0%	0.0%	2	0.0%
DUALS WEEK ENDING 1119	40	0	16.95	72.5%	8.68	60.0%	0	0		13	40	32.5%	16	27	59.3%	16	25	64.0%	7	11	63.6%	9	14	64.3%	0	2	0.0%	5.0%	4	21.00	100.0%	75.0%	25.0%	4	75.0%	25.0%	4	75.0%
DUALS WEEK ENDING 1209	7	1	12.86	50.0%	7.88	25.0%	0	0		2	8	25.0%	2	6	33.3%	2	6	33.3%	0	0		2	6	33.3%	0	0		0.0%	0					1	100.0%	0.0%	1	0.0%
DUALS FEBRUARY 6	20	0	14.00	55.0%	8.15	45.0%	0	0		6	20	30.0%	5	14	35.7%	5	9	55.6%	2	3	66.7%	3	6	50.0%	0	5	0.0%	25.0%	2	13.50	50.0%	0.0%	0.0%	2	0.0%	0.0%	2	0.0%
PAT LACY MEMORIAL	50	0	18.34	84.0%	8.52	64.0%	0	0		16	50	32.0%	26	34	76.5%	24	31	77.4%	12	16	75.0%	12	15	80.0%	2	3	66.7%	6.0%	5	17.80	80.0%	40.0%	20.0%	5	100.0%	40.0%	5	20.0%
FEBRUARY 2021 DUALS	10	0	20.30	80.0%	9.10	80.0%	0	0		4	10	40.0%	4	6	66.7%	4	5	80.0%	3	4	75.0%	1	1	100.0%	0	1	0.0%	10.0%	1	30.00	100.0%	100.0%	100.0%	1	0.0%	0.0%	1	0.0%

# DAEMEN COLLEGE

## 2017-18 TEAM STATISTICS BY PLAYER BY FORMAT BY EVENT

division (All)

Row Labels	All Bowlers																								ANCHOR BOWLER					LEADOFF BOWLER			4TH BOWLER					
	COMPLET E FRAMES	INCOMPL ETE FRAMES	AVG / FRAME	OVER- ALL FILL %	AVG 1ST BALL	1ST BALL "9+ %"	BAKER DBL STRIKES	BAKER DBL ATTPPTS	BAKER DBL %	STRIKES	STRIKE ATTPPTS	STRIKE %	ALL SPARES	ALL SPARE ATTPPTS	ALL SPARE CONV %	MAKE- ABLE SPARES	MAKE- ABLE SPARE ATTPPTS	MAKE- ABLE SPARE %	SINGLE PIN SPARES	SINGLE PIN SPARE ATTPPTS	SINGLE PIN SPARE CONV %	MULTI- PIN MAKE- ABLE SPARES	MULTI- PIN MAKE- ABLE ATTPPTS	MULTI- PIN MAKE- ABLE CONV %	SPLIT- SPARES	SPLIT ATTPPTS	SPLIT CONV %	SPLIT LEAVE %	10TH FRAME ATTPPTS	10TH FRAME AVG	10TH FRAME FILL %	10TH FRAME STRIKE %	10TH FRAME DBL %	LEAD- OFF ATTPPTS	LEAD- OFF %	LEAD- OFF STRIKE %	SETUP ATTPPTS	SETUP %
Katlyn Newberry	491	5	17.79	76.4%	8.65	63.1%	61	123	49.6%	188	496	37.9%	191	308	62.0%	189	265	71.3%	103	125	82.4%	86	140	61.4%	2	43	4.7%	8.7%	66	17.74	81.8%	33.3%	10.6%	14	78.6%	50.0%	123	39.0%
BAKER	364	4	17.87	76.1%	8.68	63.6%	61	123	49.6%	142	368	38.6%	138	226	61.1%	136	191	71.2%	75	92	81.5%	61	99	61.6%	2	35	5.7%	9.5%	54	17.50	79.6%	35.2%	9.3%	0			110	38.2%
DUAL AT KENMORE	7	1	13.14	50.0%	8.00	25.0%	0	1	0.0%	2	8	25.0%	2	6	33.3%	2	4	50.0%	0	0		2	4	50.0%	0	2	0.0%	25.0%	0					0			4	25.0%
MEDAILLE INVITE	106	0	18.13	78.3%	8.80	65.1%	21	33	63.6%	47	106	44.3%	36	59	61.0%	36	49	73.5%	18	22	81.8%	18	27	66.7%	0	10	0.0%	9.4%	33	17.97	81.8%	42.4%	9.1%	0			0	
DUALS WEEK ENDING 1119	24	0	14.13	50.0%	8.29	50.0%	2	7	28.6%	6	24	25.0%	6	18	33.3%	6	18	33.3%	3	6	50.0%	3	12	25.0%	0	0		0.0%	12	16.92	75.0%	25.0%	8.3%	0			0	
DUALS WEEK ENDING 1209	10	0	15.30	60.0%	7.90	50.0%	0	3	0.0%	3	10	30.0%	3	7	42.9%	3	5	60.0%	2	2	100.0%	1	3	33.3%	0	2	0.0%	20.0%	5	15.40	60.0%	20.0%	0.0%	0			0	
DUALS FEBRUARY 6	9	1	16.56	70.0%	8.60	70.0%	1	1	100.0%	3	10	30.0%	4	7	57.1%	4	6	66.7%	4	4	100.0%	0	2	0.0%	0	1	0.0%	10.0%	0					0			5	40.0%
MOLLOY BAKER	99	1	18.83	78.0%	8.70	66.0%	17	41	41.5%	42	100	42.0%	36	58	62.1%	35	47	74.5%	18	24	75.0%	17	23	73.9%	1	11	9.1%	11.0%	0					0			50	46.0%
ECC CHAMPIONSHIPS	109	1	18.22	81.8%	8.75	66.4%	20	37	54.1%	39	110	35.5%	51	71	71.8%	50	62	80.6%	30	34	88.2%	20	28	71.4%	1	9	11.1%	8.2%	4	18.00	100.0%	25.0%	25.0%	0			51	31.4%
TRADITIONAL	127	1	17.55	77.3%	8.56	61.7%	0	0		46	128	35.9%	53	82	64.6%	53	74	71.6%	28	33	84.8%	25	41	61.0%	0	8	0.0%	6.3%	12	18.83	91.7%	25.0%	16.7%	14	78.6%	50.0%	13	46.2%
DUAL AT KENMORE	10	0	13.60	50.0%	8.70	60.0%	0	0		4	10	40.0%	1	6	16.7%	1	5	20.0%	1	2	50.0%	0	3	0.0%	0	1	0.0%	10.0%	1	9.00	0.0%	0.0%	0.0%	1	0.0%	0.0%	1	100.0%
DUALS WEEK ENDING 1119	40	0	19.10	87.5%	8.78	65.0%	0	0		15	40	37.5%	20	25	80.0%	20	23	87.0%	11	11	100.0%	9	12	75.0%	0	2	0.0%	5.0%	4	20.50	100.0%	50.0%	25.0%	4	100.0%	50.0%	4	25.0%
DUALS WEEK ENDING 1209	20	0	20.75	90.0%	8.80	65.0%	0	0		11	20	55.0%	7	9	77.8%	7	8	87.5%	2	2	100.0%	5	6	83.3%	0	1	0.0%	5.0%	2	21.50	100.0%	50.0%	50.0%	2	100.0%	100.0%	2	50.0%
DUALS FEBRUARY 6	20	0	16.75	75.0%	8.70	70.0%	0	0		5	20	25.0%	10	15	66.7%	10	13	76.9%	7	9	77.8%	3	4	75.0%	0	2	0.0%	10.0%	2	19.00	100.0%	0.0%	0.0%	2	100.0%	100.0%	2	50.0%
PAT LACY MEMORIAL	31	0	16.39	74.2%	8.00	54.8%	0	0		9	31	29.0%	14	22	63.6%	14	22	63.6%	6	8	75.0%	8	14	57.1%	0	0		0.0%	3	18.00	100.0%	0.0%	0.0%	4	75.0%	25.0%	3	66.7%
FEBRUARY 2021 DUALS	6	1	11.83	42.9%	8.43	42.9%	0	0		2	7	28.6%	1	5	20.0%	1	3	33.3%	1	1	100.0%	0	2	0.0%	0	2	0.0%	28.6%	0					1	0.0%	0.0%	1	0.0%

# DAEMEN COLLEGE

## 2017-18 TEAM STATISTICS BY PLAYER BY FORMAT BY EVENT

division (All)

Row Labels	All Bowlers																								ANCHOR BOWLER					LEADOFF BOWLER			4TH BOWLER					
	COMPLET E FRAMES	INCOMPL ETE FRAMES	AVG / FRAME	OVER- ALL FILL %	AVG 1ST BALL	1ST BALL "9+ %"	BAKER DBL STRIKES	BAKER DBL ATTPPTS	BAKER DBL %	STRIKES	STRIKE ATTPPTS	STRIKE %	ALL SPARES	ALL SPARE ATTPPTS	ALL SPARE CONV %	MAKE- ABLE SPARES	MAKE- ABLE SPARE ATTPPTS	MAKE- ABLE SPARE %	SINGLE PIN SPARES	SINGLE PIN SPARE ATTPPTS	SINGLE PIN SPARE CONV %	MULTI- PIN MAKE- ABLE SPARES	MULTI- PIN MAKE- ABLE ATTPPTS	MULTI- PIN MAKE- ABLE CONV %	SPLIT- SPARES	SPLIT ATTPPTS	SPLIT CONV %	SPLIT LEAVE %	10TH FRAME ATTPPTS	10TH FRAME AVG	10TH FRAME FILL %	10TH FRAME STRIKE %	10TH FRAME DBL %	LEAD- OFF ATTPPTS	LEAD- OFF %	LEAD- OFF FILL %	LEAD- OFF STRIKE %	SETUP ATTPPTS
Madison Rogacki	268	5	15.89	66.3%	8.26	49.5%	18	57	31.6%	82	273	30.0%	99	191	51.8%	95	172	55.2%	38	53	71.7%	57	119	47.9%	4	19	21.1%	7.0%	9	16.22	77.8%	0.0%	0.0%	14	78.6%	28.6%	28	35.7%
BAKER	174	5	15.97	67.0%	8.26	47.5%	18	57	31.6%	55	179	30.7%	65	124	52.4%	61	112	54.5%	18	30	60.0%	43	82	52.4%	4	12	33.3%	6.7%	0					4	50.0%	25.0%	18	27.8%
DUAL AT KENMORE	7	1	14.57	62.5%	7.88	37.5%	2	2	100.0%	3	8	37.5%	2	5	40.0%	2	5	40.0%	0	0		2	5	40.0%	0	0		0.0%	0					4	50.0%	25.0%	0	
MEDAILLE INVITE	92	0	16.63	69.6%	8.23	47.8%	11	34	32.4%	30	92	32.6%	34	62	54.8%	34	59	57.6%	8	14	57.1%	26	45	57.8%	0	3	0.0%	3.3%	0					0			18	27.8%
DUALS WEEK ENDING 1119	21	0	14.86	61.9%	8.19	47.6%	2	5	40.0%	5	21	23.8%	8	16	50.0%	6	13	46.2%	3	5	60.0%	3	8	37.5%	2	3	66.7%	14.3%	0					0			0	
DUALS WEEK ENDING 1209	10	0	14.60	50.0%	8.10	40.0%	1	2	50.0%	4	10	40.0%	1	6	16.7%	1	5	20.0%	0	0		1	5	20.0%	0	1	0.0%	10.0%	0					0			0	
FEBRUARY 2021 DUALS	12	2	14.92	64.3%	8.64	57.1%	1	4	25.0%	5	14	35.7%	4	9	44.4%	4	8	50.0%	2	3	66.7%	2	5	40.0%	0	1	0.0%	7.1%	0					0			0	
MOLLOY BAKER	32	1	15.91	69.7%	8.39	45.5%	1	10	10.0%	7	33	21.2%	16	26	61.5%	14	22	63.6%	5	8	62.5%	9	14	64.3%	2	4	50.0%	12.1%	0					0			0	
ECC CHAMPIONSHIPS	0	1		100.0%		100.0%	0	0		1	1	100.0%	0	0		0	0		0	0		0	0		0	0		0.0%	0					0			0	
TRADITIONAL	94	0	15.76	64.9%	8.26	53.2%	0	0		27	94	28.7%	34	67	50.7%	34	60	56.7%	20	23	87.0%	14	37	37.8%	0	7	0.0%	7.4%	9	16.22	77.8%	0.0%	0.0%	10	90.0%	30.0%	10	50.0%
DUAL AT KENMORE	20	0	16.70	70.0%	8.45	55.0%	0	0		7	20	35.0%	7	13	53.8%	7	11	63.6%	4	4	100.0%	3	7	42.9%	0	2	0.0%	10.0%	2	19.50	100.0%	0.0%	0.0%	2	100.0%	50.0%	2	50.0%
DUALS WEEK ENDING 1119	36	0	16.81	69.4%	8.42	58.3%	0	0		13	36	36.1%	12	23	52.2%	12	21	57.1%	7	8	87.5%	5	13	38.5%	0	2	0.0%	5.6%	3	14.00	66.7%	0.0%	0.0%	4	100.0%	25.0%	4	50.0%
DUALS WEEK ENDING 1209	15	0	15.87	73.3%	8.13	60.0%	0	0		5	15	33.3%	6	10	60.0%	6	10	60.0%	4	4	100.0%	2	6	33.3%	0	0		0.0%	1	18.00	100.0%	0.0%	0.0%	2	50.0%	0.0%	2	50.0%
PAT LACY MEMORIAL	20	0	13.35	50.0%	8.10	45.0%	0	0		2	20	10.0%	8	18	44.4%	8	15	53.3%	5	7	71.4%	3	8	37.5%	0	3	0.0%	15.0%	2	14.00	50.0%	0.0%	0.0%	2	100.0%	50.0%	2	50.0%
FEBRUARY 2021 DUALS	3	0	12.33	33.3%	6.67	0.0%	0	0		0	3	0.0%	1	3	33.3%	1	3	33.3%	0	0		1	3	33.3%	0	0		0.0%	1	19.00	100.0%	0.0%	0.0%	0			0	

# DAEMEN COLLEGE

## 2017-18 TEAM STATISTICS BY PLAYER BY FORMAT BY EVENT

division (All)

Row Labels	All Bowlers																								ANCHOR BOWLER					LEADOFF BOWLER			4TH BOWLER					
	COMPLETE FRAMES	INCOMPLETE FRAMES	AVG / FRAME	OVER-ALL FILL %	AVG 1ST BALL	1ST BALL "9+ %"	BAKER DBL STRIKES	BAKER DBL ATTPPTS	BAKER DBL %	STRIKES	STRIKE ATTPPTS	STRIKE %	ALL SPARES	ALL SPARE ATTPPTS	ALL SPARE CONV %	MAKE-ABLE SPARES	MAKE-ABLE SPARE ATTPPTS	MAKE-ABLE SPARE %	SINGLE PIN SPARES	SINGLE PIN SPARE ATTPPTS	SINGLE PIN SPARE CONV %	MULTI-PIN MAKE-ABLE SPARES	MULTI-PIN MAKE-ABLE ATTPPTS	MULTI-PIN MAKE-ABLE CONV %	SPLIT-SPARES	SPLIT ATTPPTS	SPLIT CONV %	SPLIT LEAVE %	10TH FRAME ATTPPTS	10TH FRAME AVG	10TH FRAME FILL %	10TH FRAME STRIKE %	10TH FRAME DBL %	LEAD-OFF ATTPPTS	LEAD-OFF %	LEAD-OFF STRIKE %	SETUP ATTPPTS	SETUP %
Rachel Steele	459	5	17.81	77.8%	8.57	58.8%	45	127	35.4%	155	464	33.4%	206	309	66.7%	201	268	75.0%	92	118	78.0%	109	150	72.7%	5	41	12.2%	8.8%	143	18.11	81.1%	32.2%	11.9%	23	69.6%	26.1%	27	44.4%
BAKER	329	5	17.68	77.2%	8.55	58.7%	45	127	35.4%	107	334	32.0%	151	227	66.5%	149	201	74.1%	74	89	83.1%	75	112	67.0%	2	26	7.7%	7.8%	130	18.25	82.3%	32.3%	12.3%	10	60.0%	20.0%	14	42.9%
DUAL AT KENMORE	1	1	9.00	50.0%	8.50	50.0%	0	1	0.0%	1	2	50.0%	0	1	0.0%	0	1	0.0%	0	0		0	1	0.0%	0	0		0.0%	0					0			0	
MEDAILLE INVITE	77	2	17.51	77.2%	8.37	50.6%	10	29	34.5%	24	79	30.4%	37	55	67.3%	36	47	76.6%	12	16	75.0%	24	31	77.4%	1	8	12.5%	10.1%	20	20.40	95.0%	45.0%	20.0%	10	60.0%	20.0%	5	40.0%
DUALS WEEK ENDING 1119	13	1	17.46	78.6%	8.79	64.3%	1	3	33.3%	5	14	35.7%	6	9	66.7%	6	9	66.7%	3	4	75.0%	3	5	60.0%	0	0		0.0%	0					0			0	
DUALS WEEK ENDING 1209	9	1	16.89	80.0%	8.10	50.0%	2	4	50.0%	3	10	30.0%	5	7	71.4%	5	7	71.4%	2	2	100.0%	3	5	60.0%	0	0		0.0%	0					0			5	40.0%
DUALS FEBRUARY 6	10	0	21.50	90.0%	8.80	70.0%	2	3	66.7%	6	10	60.0%	3	4	75.0%	3	4	75.0%	1	1	100.0%	2	3	66.7%	0	0		0.0%	5	20.60	100.0%	60.0%	20.0%	0			0	
FEBRUARY 2021 DUALS	14	0	14.86	50.0%	8.71	57.1%	3	7	42.9%	5	14	35.7%	2	9	22.2%	2	5	40.0%	2	3	66.7%	0	2	0.0%	0	4	0.0%	28.6%	7	14.29	57.1%	28.6%	0.0%	0			0	
MOLLOY BAKER	95	0	17.72	75.8%	8.63	64.2%	13	39	33.3%	29	95	30.5%	43	66	65.2%	43	61	70.5%	27	32	84.4%	16	29	55.2%	0	5	0.0%	5.3%	47	18.13	78.7%	29.8%	14.9%	0			0	
ECC CHAMPIONSHIPS	110	0	17.95	80.9%	8.58	59.1%	14	41	34.1%	34	110	30.9%	55	76	72.4%	54	67	80.6%	27	31	87.1%	27	36	75.0%	1	9	11.1%	8.2%	51	17.84	82.4%	27.5%	7.8%	0			4	50.0%
TRADITIONAL	130	0	18.13	79.2%	8.62	59.2%	0	0		48	130	36.9%	55	82	67.1%	52	67	77.6%	18	29	62.1%	34	38	89.5%	3	15	20.0%	11.5%	13	16.69	69.2%	30.8%	7.7%	13	76.9%	30.8%	13	46.2%
DUAL AT KENMORE	10	0	13.60	50.0%	8.40	50.0%	0	0		3	10	30.0%	2	7	28.6%	2	6	33.3%	1	2	50.0%	1	4	25.0%	0	1	0.0%	10.0%	1	8.00	0.0%	0.0%	0.0%	1	100.0%	100.0%	1	0.0%
DUALS WEEK ENDING 1119	20	0	17.60	85.0%	8.40	55.0%	0	0		6	20	30.0%	11	14	78.6%	11	13	84.6%	3	5	60.0%	8	8	100.0%	0	1	0.0%	5.0%	2	19.00	100.0%	50.0%	0.0%	2	100.0%	50.0%	2	100.0%
DUALS WEEK ENDING 1209	20	0	18.90	90.0%	8.70	70.0%	0	0		8	20	40.0%	10	12	83.3%	10	11	90.9%	5	6	83.3%	5	5	100.0%	0	1	0.0%	5.0%	2	13.50	50.0%	50.0%	0.0%	2	100.0%	50.0%	2	0.0%
DUALS FEBRUARY 6	20	0	19.65	80.0%	8.95	60.0%	0	0		9	20	45.0%	7	11	63.6%	6	8	75.0%	1	3	33.3%	5	5	100.0%	1	3	33.3%	15.0%	2	14.50	50.0%	0.0%	0.0%	2	100.0%	0.0%	2	0.0%
PAT LACY MEMORIAL	50	0	17.88	74.0%	8.46	54.0%	0	0		18	50	36.0%	19	32	59.4%	17	23	73.9%	4	9	44.4%	13	14	92.9%	2	9	22.2%	18.0%	5	19.40	80.0%	40.0%	20.0%	5	40.0%	20.0%	5	60.0%
FEBRUARY 2021 DUALS	10	0	20.40	100.0%	9.20	80.0%	0	0		4	10	40.0%	6	6	100.0%	6	6	100.0%	4	4	100.0%	2	2	100.0%	0	0		0.0%	1	18.00	100.0%	0.0%	0.0%	1	100.0%	0.0%	1	100.0%

# DAEMEN COLLEGE

## 2017-18 TEAM STATISTICS BY PLAYER BY FORMAT BY EVENT

division (All)

Row Labels	All Bowlers																								ANCHOR BOWLER					LEADOFF BOWLER			4TH BOWLER						
	COMPLET E FRAMES	INCOMPL ETE FRAMES	AVG / FRAME	OVER- ALL FILL %	AVG 1ST BALL	1ST BALL "9+ %"	BAKER DBL STRIKES	BAKER DBL ATTPPTS	BAKER DBL %	STRIKES	STRIKE ATTPPTS	STRIKE %	ALL SPARES	ALL SPARE ATTPPTS	ALL SPARE CONV %	MAKE- ABLE SPARES	MAKE- ABLE SPARE ATTPPTS	MAKE- ABLE SPARE %	SINGLE PIN SPARES	SINGLE PIN SPARE ATTPPTS	SINGLE PIN SPARE CONV %	MULTI- PIN MAKE- ABLE SPARES	MULTI- PIN MAKE- ABLE ATTPPTS	MULTI- PIN MAKE- ABLE CONV %	SPLIT- SPARES	SPLIT ATTPPTS	SPLIT CONV %	SPLIT LEAVE %	10TH FRAME ATTPPTS	10TH FRAME AVG	10TH FRAME FILL %	10TH FRAME STRIKE %	10TH FRAME DBL %	LEAD- OFF ATTPPTS	LEAD- OFF %	LEAD- OFF STRIKE %	SETUP ATTPPTS	SETUP %	
Adrianna Pencek	343	3	16.66	69.7%	8.45	56.1%	27	69	39.1%	107	346	30.9%	134	239	56.1%	128	204	62.7%	61	87	70.1%	67	117	57.3%	6	35	17.1%	10.1%	13	16.08	69.2%	30.8%	0.0%	22	54.5%	22.7%	20	35.0%	
BAKER	246	3	16.47	69.1%	8.43	56.6%	27	69	39.1%	76	249	30.5%	96	173	55.5%	93	148	62.8%	44	65	67.7%	49	83	59.0%	3	25	12.0%	10.0%	3	16.00	66.7%	33.3%	0.0%	12	66.7%	25.0%	11	45.5%	
MEDAILLE INVITE	23	1	17.04	75.0%	8.42	50.0%	2	7	28.6%	8	24	33.3%	10	16	62.5%	10	14	71.4%	4	4	100.0%	6	10	60.0%	0	2	0.0%	8.3%	0					5	60.0%	40.0%	0		
DUALS WEEK ENDING 1119	22	1	16.64	69.6%	8.48	56.5%	3	3	100.0%	8	23	34.8%	8	15	53.3%	8	14	57.1%	2	5	40.0%	6	9	66.7%	0	1	0.0%	4.3%	0					7	71.4%	14.3%	4	25.0%	
DUALS FEBRUARY 6	10	0	11.90	30.0%	7.20	10.0%	1	3	33.3%	1	10	10.0%	2	9	22.2%	2	6	33.3%	0	0		2	6	33.3%	0	3	0.0%	30.0%	0					0			0		
FEBRUARY 2021 DUALS	13	1	20.38	85.7%	8.71	64.3%	6	8	75.0%	7	14	50.0%	5	7	71.4%	5	7	71.4%	1	2	50.0%	4	5	80.0%	0	0		0.0%	0					0			7	57.1%	
MOLLOY BAKER	72	0	16.39	68.1%	8.44	61.1%	4	17	23.5%	20	72	27.8%	29	52	55.8%	28	46	60.9%	16	24	66.7%	12	22	54.5%	1	6	16.7%	8.3%	3	16.00	66.7%	33.3%	0.0%	0				0	
ECC CHAMPIONSHIPS	106	0	16.32	69.8%	8.49	58.5%	11	31	35.5%	32	106	30.2%	42	74	56.8%	40	61	65.6%	21	30	70.0%	19	31	61.3%	2	13	15.4%	12.3%	0					0				0	
TRADITIONAL	97	0	17.14	71.1%	8.49	54.6%	0	0		31	97	32.0%	38	66	57.6%	35	56	62.5%	17	22	77.3%	18	34	52.9%	3	10	30.0%	10.3%	10	16.10	70.0%	30.0%	0.0%	10	40.0%	20.0%	9	22.2%	
DUAL AT KENMORE	10	0	13.60	50.0%	7.90	50.0%	0	0		3	10	30.0%	2	7	28.6%	2	6	33.3%	2	2	100.0%	0	4	0.0%	0	1	0.0%	10.0%	1	19.00	100.0%	100.0%	0.0%	1	0.0%	0.0%	1	0.0%	
DUALS WEEK ENDING 1119	4	0	13.75	50.0%	8.50	50.0%	0	0		0	4	0.0%	2	4	50.0%	2	4	50.0%	1	2	50.0%	1	2	50.0%	0	0		0.0%	1	9.00	0.0%	0.0%	0.0%	0			0		
DUALS WEEK ENDING 1209	3	0	9.00	0.0%	7.33	33.3%	0	0		0	3	0.0%	0	3	0.0%	0	2	0.0%	0	1	0.0%	0	1	0.0%	0	1	0.0%	33.3%	0					1	0.0%	0.0%	0		
DUALS FEBRUARY 6	20	0	17.30	70.0%	8.40	55.0%	0	0		6	20	30.0%	8	14	57.1%	7	12	58.3%	3	5	60.0%	4	7	57.1%	1	2	50.0%	10.0%	2	12.50	50.0%	0.0%	0.0%	2	0.0%	0.0%	2	50.0%	
PAT LACY MEMORIAL	50	0	17.54	76.0%	8.62	56.0%	0	0		17	50	34.0%	21	33	63.6%	19	27	70.4%	10	11	90.9%	9	16	56.3%	2	6	33.3%	12.0%	5	17.80	80.0%	40.0%	0.0%	5	60.0%	40.0%	5	0.0%	
FEBRUARY 2021 DUALS	10	0	22.20	100.0%	9.00	60.0%	0	0		5	10	50.0%	5	5	100.0%	5	5	100.0%	1	1	100.0%	4	4	100.0%	0	0		0.0%	1	19.00	100.0%	0.0%	0.0%	1	100.0%	0.0%	1	100.0%	

# DAEMEN COLLEGE

## 2017-18 TEAM STATISTICS BY PLAYER BY FORMAT BY EVENT

division (All)

Row Labels	All Bowlers																								ANCHOR BOWLER					LEADOFF BOWLER			4TH BOWLER					
	COMPLET E FRAMES	INCOMPL ETE FRAMES	AVG / FRAME	OVER- ALL FILL %	AVG 1ST BALL	1ST BALL "9+ %"	BAKER DBL STRIKES	BAKER DBL ATTPPTS	BAKER DBL %	STRIKES	STRIKE ATTPPTS	STRIKE %	ALL SPARES	ALL SPARE ATTPPTS	ALL SPARE CONV %	MAKE- ABLE SPARES	MAKE- ABLE SPARE ATTPPTS	MAKE- ABLE SPARE %	SINGLE PIN SPARES	SINGLE PIN SPARE ATTPPTS	SINGLE PIN SPARE CONV %	MULTI- PIN MAKE- ABLE SPARES	MULTI- PIN MAKE- ABLE ATTPPTS	MULTI- PIN MAKE- ABLE CONV %	SPLIT- SPARES	SPLIT ATTPPTS	SPLIT CONV %	SPLIT LEAVE %	10TH FRAME ATTPPTS	10TH FRAME AVG	10TH FRAME FILL %	10TH FRAME STRIKE %	10TH FRAME DBL %	LEAD- OFF ATTPPTS	LEAD- OFF %	LEAD- OFF STRIKE %	SETUP ATTPPTS	SETUP %
Kaitlyn O'Hara	252	3	16.31	70.2%	8.34	49.0%	10	34	29.4%	63	255	24.7%	116	192	60.4%	110	160	68.8%	51	62	82.3%	59	98	60.2%	6	32	18.8%	12.5%	7	16.14	71.4%	28.6%	0.0%	98	74.5%	26.5%	7	28.6%
BAKER	185	3	16.68	71.8%	8.37	50.5%	10	34	29.4%	49	188	26.1%	86	139	61.9%	82	115	71.3%	40	46	87.0%	42	69	60.9%	4	24	16.7%	12.8%	0					92	73.9%	27.2%	0	
MEDAILLE INVITE	4	0	13.25	50.0%	8.00	25.0%	0	0		0	4	0.0%	2	4	50.0%	2	4	50.0%	1	1	100.0%	1	3	33.3%	0	0		0.0%	0					2	50.0%	0.0%	0	
DUALS WEEK ENDING 1119	4	0	10.75	25.0%	7.25	25.0%	0	0		0	4	0.0%	1	4	25.0%	1	4	25.0%	1	1	100.0%	0	3	0.0%	0	0		0.0%	0					0			0	
DUALS FEBRUARY 6	9	1	19.67	90.0%	8.20	50.0%	1	3	33.3%	3	10	30.0%	6	7	85.7%	6	7	85.7%	2	2	100.0%	4	5	80.0%	0	0		0.0%	0					5	80.0%	40.0%	0	
FEBRUARY 2021 DUALS	13	1	17.54	78.6%	8.64	64.3%	1	3	33.3%	4	14	28.6%	7	10	70.0%	7	9	77.8%	5	5	100.0%	2	4	50.0%	0	1	0.0%	7.1%	0					7	85.7%	28.6%	0	
MOLLOY BAKER	56	0	16.84	75.0%	8.38	51.8%	1	11	9.1%	13	56	23.2%	29	43	67.4%	27	36	75.0%	15	16	93.8%	12	20	60.0%	2	7	28.6%	12.5%	0					28	78.6%	21.4%	0	
ECC CHAMPIONSHIPS	99	1	16.58	70.0%	8.41	50.0%	7	17	41.2%	29	100	29.0%	41	71	57.7%	39	55	70.9%	16	21	76.2%	23	34	67.6%	2	16	12.5%	16.0%	0					50	70.0%	30.0%	0	
TRADITIONAL	67	0	15.28	65.7%	8.25	44.8%	0	0		14	67	20.9%	30	53	56.6%	28	45	62.2%	11	16	68.8%	17	29	58.6%	2	8	25.0%	11.9%	7	16.14	71.4%	28.6%	0.0%	6	83.3%	16.7%	7	28.6%
DUAL AT KENMORE	10	0	14.70	60.0%	8.20	50.0%	0	0		2	10	20.0%	4	8	50.0%	4	7	57.1%	2	3	66.7%	2	4	50.0%	0	1	0.0%	10.0%	1	20.00	100.0%	100.0%	0.0%	1	100.0%	0.0%	1	0.0%
DUALS WEEK ENDING 1119	20	0	13.65	50.0%	8.10	40.0%	0	0		5	20	25.0%	5	15	33.3%	5	13	38.5%	2	3	66.7%	3	10	30.0%	0	2	0.0%	10.0%	2	9.00	0.0%	0.0%	0.0%	2	50.0%	50.0%	2	50.0%
DUALS FEBRUARY 6	20	0	17.45	85.0%	8.45	55.0%	0	0		5	20	25.0%	12	15	80.0%	12	14	85.7%	5	6	83.3%	7	8	87.5%	0	1	0.0%	5.0%	2	19.00	100.0%	50.0%	0.0%	2	100.0%	0.0%	2	50.0%
PAT LACY MEMORIAL	7	0	11.43	28.6%	8.29	42.9%	0	0		0	7	0.0%	2	7	28.6%	2	5	40.0%	1	3	33.3%	1	2	50.0%	0	2	0.0%	28.6%	1	17.00	100.0%	0.0%	0.0%	0			1	0.0%
FEBRUARY 2021 DUALS	10	0	17.50	90.0%	8.20	30.0%	0	0		2	10	20.0%	7	8	87.5%	5	6	83.3%	1	1	100.0%	4	5	80.0%	2	2	100.0%	20.0%	1	20.00	100.0%	0.0%	0.0%	1	100.0%	0.0%	1	0.0%
Grand Total	2675	30	17.05	72.9%	8.49	57.0%	212	559	37.9%	869	2705	32.1%	1104	1836	60.1%	1064	1583	67.2%	517	674	76.7%	547	909	60.2%	40	253	15.8%	9.4%	270	17.73	80.0%	31.5%	10.4%	271	72.0%	26.9%	271	36.5%